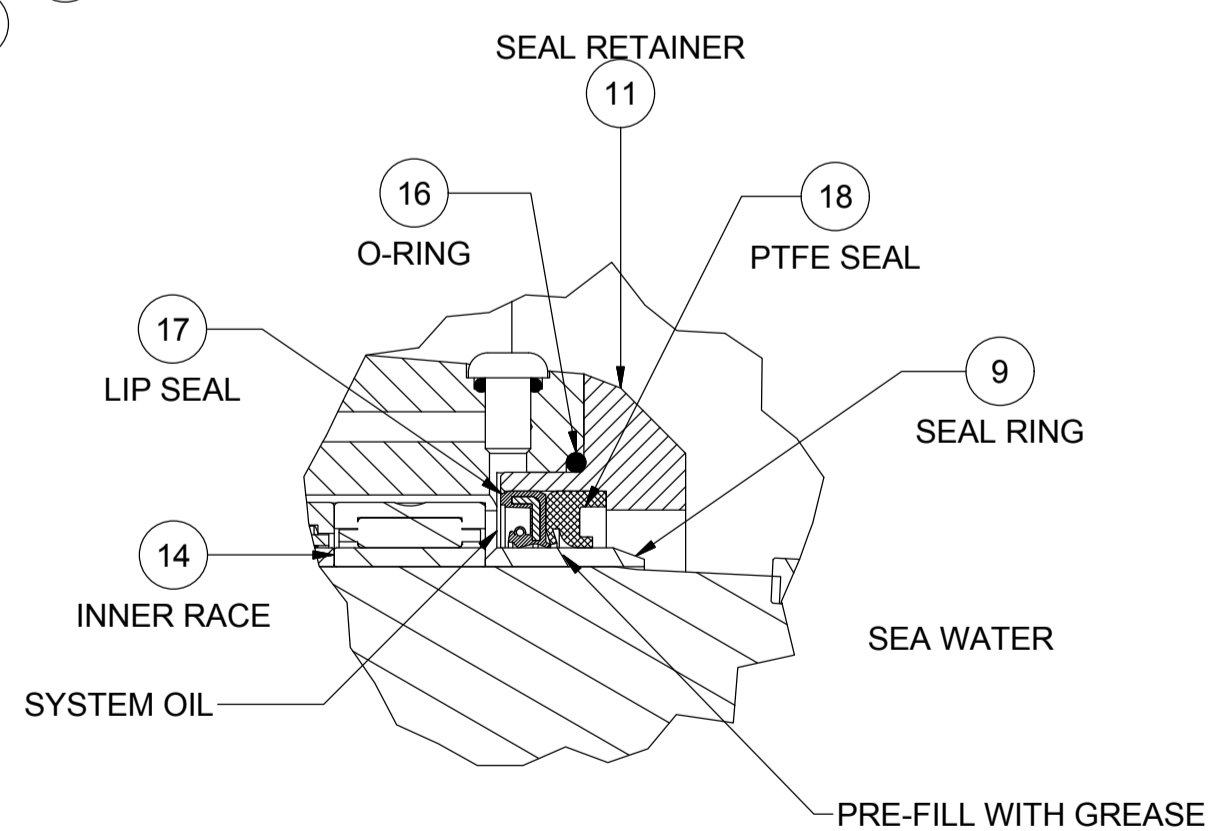
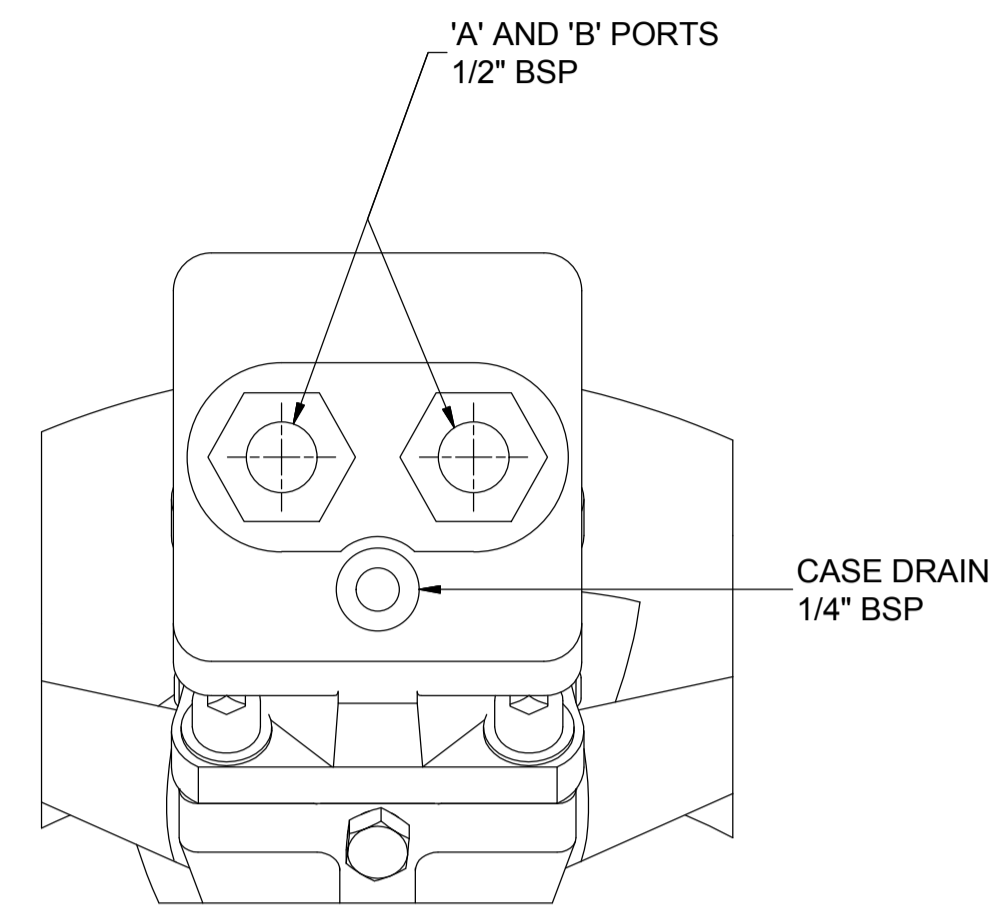


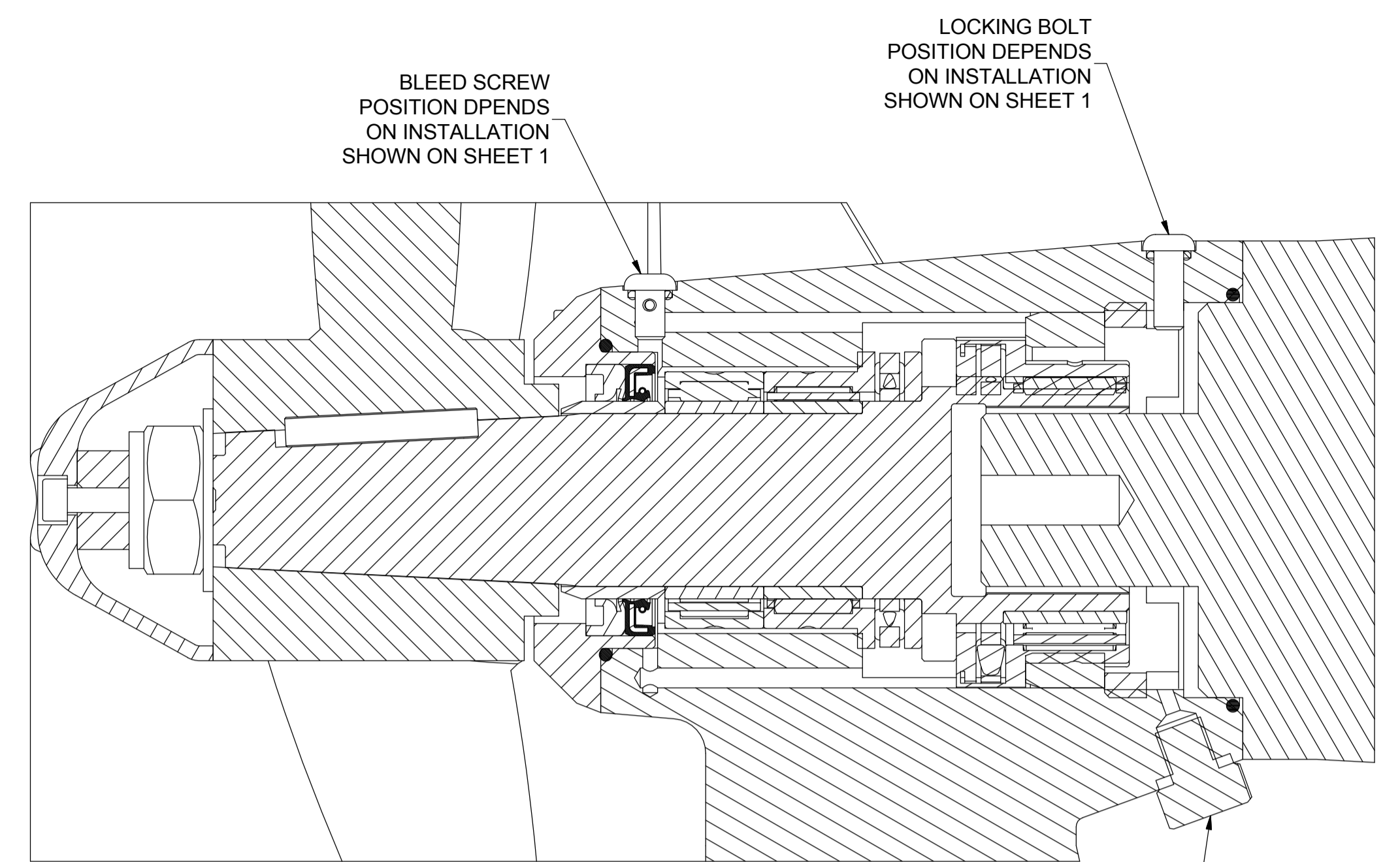
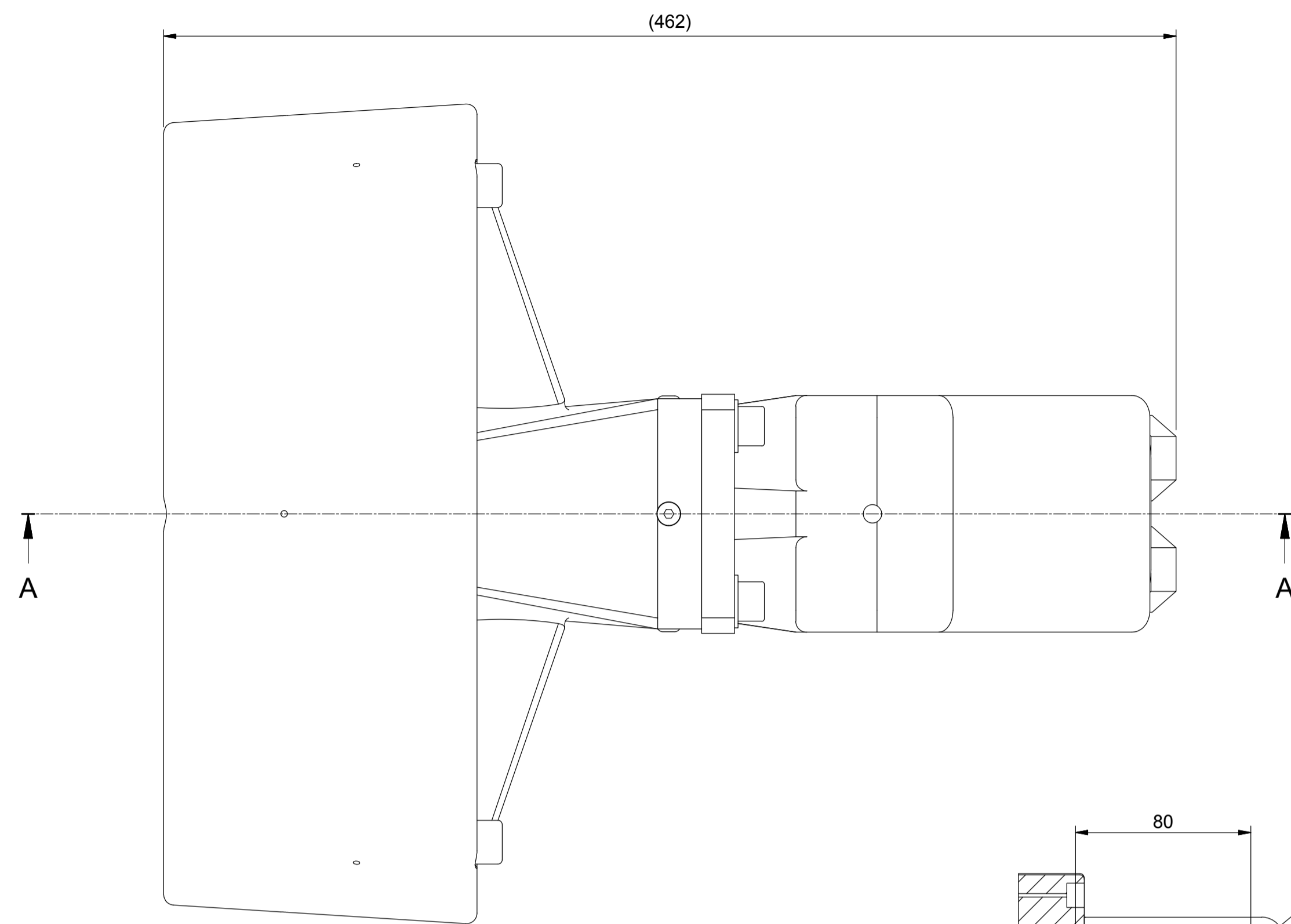
PARTS LIST			
ITEM	PART No	DESCRIPTION	QTY
1	AB0882	BLEED SCREW M6	1
2	AB4091	PEDESTAL STE 300	1
3	AB4093	MOTOR HYD 23CC LIGHT WT - MODA17FO023/10MLWK0E81-0	1
4	OB_1516	BOLT M6 x 10 SKT BTN HD SS A4-80	2
5	OF_2009	PLUG 1/8" BSPP PLASTIC	1
6	ON_1015	NNUT M20 x 1.5 x 15L NYLOC SS A4-80	1
7	OR_1211	O RING BS009 (5.28 x 1.78)	4
8	OV_1110	THREAD INSERT 230/300/380	8
9	OV_3006-2	SHAFT SEAL RING HT 300/380	1
10	OV_3007	PROPELLOR CAP	1
11	OV_3008	SEAL RETAINER	1
12	OV_3015	THRUST NEEDLE BEARING HT 300/380	1
13	OV_3016	NEEDLE BEARING HT 300/380	1
14	OV_3017	BEARING INNER RING HT300/380 SS	2
15	OV_3019	CURVETECH THRUSTER KEY 6mm SS	1
16	OV_3024	O RING HT 300/380 NITRILE	1
17	OV_3036	LIP SEAL HT 300/380	1
18	OV_3037	PTFE SEAL HT 300/380	1
19	OV_3115	INNER BEARING HT 300/380-23/32REX	1
20	OV_3116	THRUST/NEEDLE BEARING 300/380-23/32REX	1
21	OV_3135	THRUSTER NOZZLE HTE 300 YELLOW	1
22	OV_3139	SHAFT HTE 380	1
23	OV_3140	SLEEVE THRUST BEARING RETAINER	1
24	OV_3141	LOCKING COLLAR HTE THRUSTER BEARING	1
25	OV_3144	PROPELLOR HTE300	1
26	PA4794	BOLT M6 x 40 SHCS SS A2-70	4
27	PA4860	WASHER M12 FLAT BS4320 FORM B SS A2	4
28	PA4884	WASHER M20 FLAT BS4320 FORM B SS A2	1
29	PB9185	BOLT M12 x 30 SHCS SS A4-80	4
30	PC0228	BOLT M5 x 20 SHCS SS A2-70	4
31	PC8485	BOLT M6 x 16 SKT BTN HD SS A2-70	1
32	PC9412	BOLT M5 x 30 SHCS SS A2-70	1
33	PK0219	SEAL O-RING 80.6 x 2.62	1



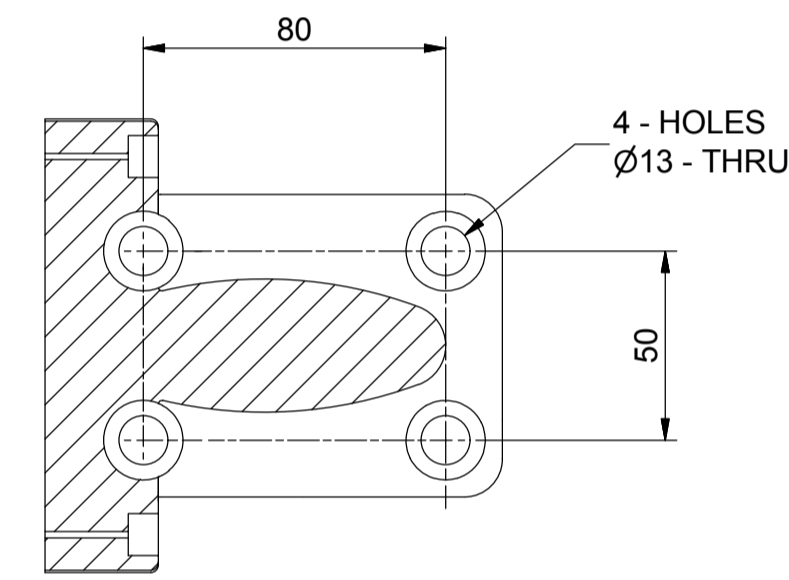
REV	DATE	CHANGE COMMENT	ZONE	DRAWN	CHECKED	APPD	DATE	EST. MASS	DIMENSIONS	SCALE	PROJECTION 3RD	TITLE																																	
5	23/05/14	RE-DRAWN TO 3D - PARTS LIST UPDATED, SHT 2 ADDED	-	LO	JCUR	JPG	07/11/08	N/A	mm	1:2		ASSEMBLY THRUSTER CURVETECH 300mm 23cc BA MOTOR																																	
<table border="1"> <tr> <td>DESIGNED</td> <td>JAR</td> <td>DRAWN</td> <td>MBARNES</td> <td>TOLERANCES UNLESS OTHERWISE STATED</td> <td colspan="3">MATERIAL:-</td> </tr> <tr> <td>CHECKED</td> <td>JAR</td> <td>APPROVED</td> <td>PD</td> <td>FABRICATION</td> <td>UP TO 100</td> <td>100 TO 300</td> <td>300 TO 1000</td> <td>OVER 1000</td> <td>DO NOT SCALE</td> <td>DRAWING No</td> <td>REV No.</td> <td>SIZE</td> </tr> <tr> <td colspan="4"></td> <td>MACHINED PART</td> <td>± 1.0</td> <td>± 1.5</td> <td>± 2.0</td> <td>± 3.0</td> <td>IF IN DOUBT ASK</td> <td>HTE_300BA-23MK2</td> <td>5</td> <td>A1</td> </tr> </table>												DESIGNED	JAR	DRAWN	MBARNES	TOLERANCES UNLESS OTHERWISE STATED	MATERIAL:-			CHECKED	JAR	APPROVED	PD	FABRICATION	UP TO 100	100 TO 300	300 TO 1000	OVER 1000	DO NOT SCALE	DRAWING No	REV No.	SIZE					MACHINED PART	± 1.0	± 1.5	± 2.0	± 3.0	IF IN DOUBT ASK	HTE_300BA-23MK2	5	A1
DESIGNED	JAR	DRAWN	MBARNES	TOLERANCES UNLESS OTHERWISE STATED	MATERIAL:-																																								
CHECKED	JAR	APPROVED	PD	FABRICATION	UP TO 100	100 TO 300	300 TO 1000	OVER 1000	DO NOT SCALE	DRAWING No	REV No.	SIZE																																	
				MACHINED PART	± 1.0	± 1.5	± 2.0	± 3.0	IF IN DOUBT ASK	HTE_300BA-23MK2	5	A1																																	
<p>ALL INTELLECTUAL PROPERTY RIGHTS SUBSISTING IN THESE DESIGNS ARE THE PROPERTY OF SOIL MACHINE DYNAMICS LTD. NO COPY IS TO BE MADE WITHOUT THE WRITTEN PERMISSION OF SOIL MACHINE DYNAMICS LTD. ANY PATENT APPLICATIONS, PATENTS AND / OR DESIGN APPLICATIONS, REGISTERED DESIGNS, DESIGN RIGHTS OR COPYRIGHT ARISING FROM OR CONTAINED IN THE DESIGNS ARE THE PROPERTY OF SOIL MACHINE DYNAMICS LTD. AND ALL INFORMATION MUST BE HELD IN THE STRICTEST CONFIDENCE</p> <p>SMD Soil Machine Dynamics Ltd</p>																																													



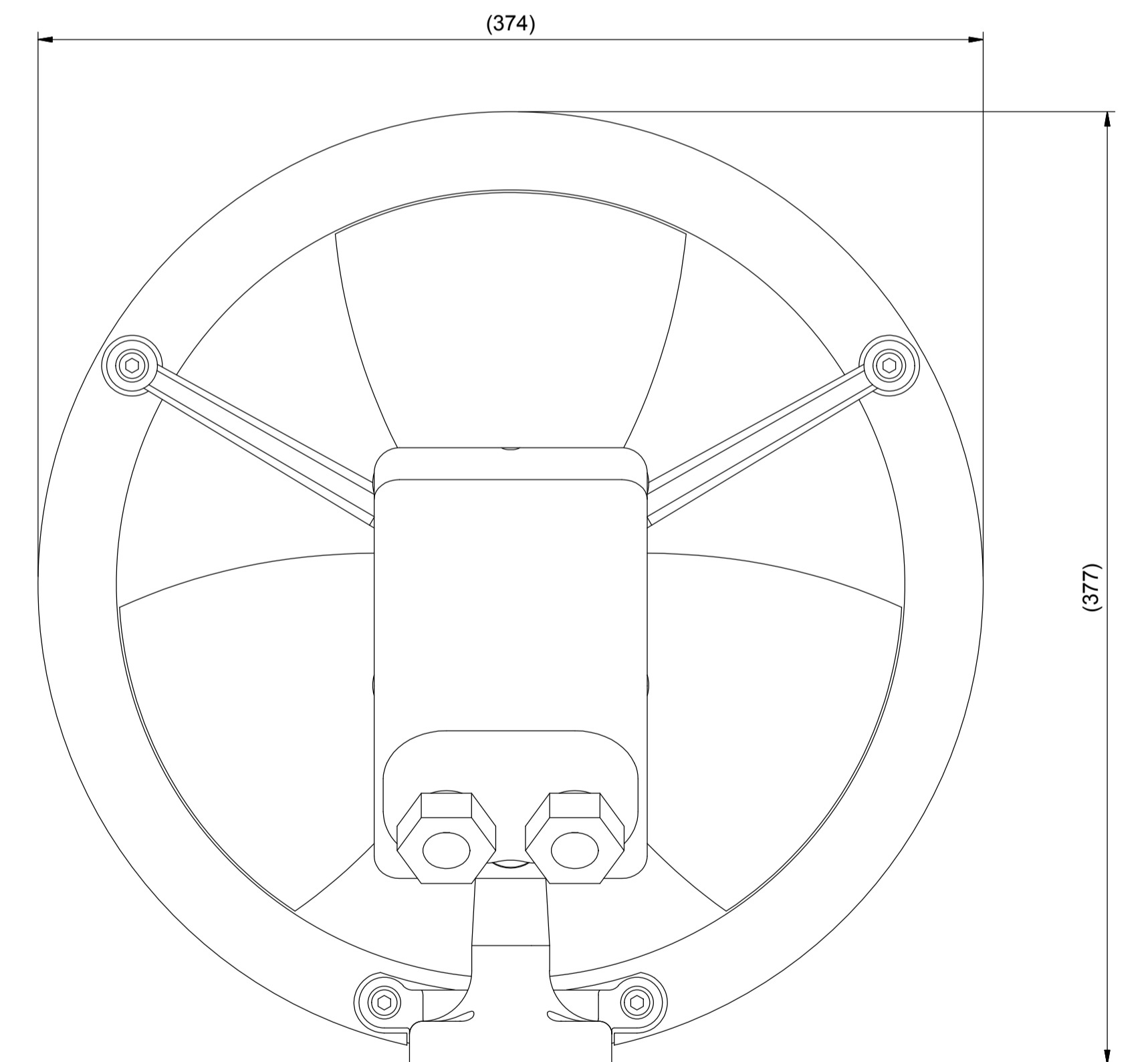
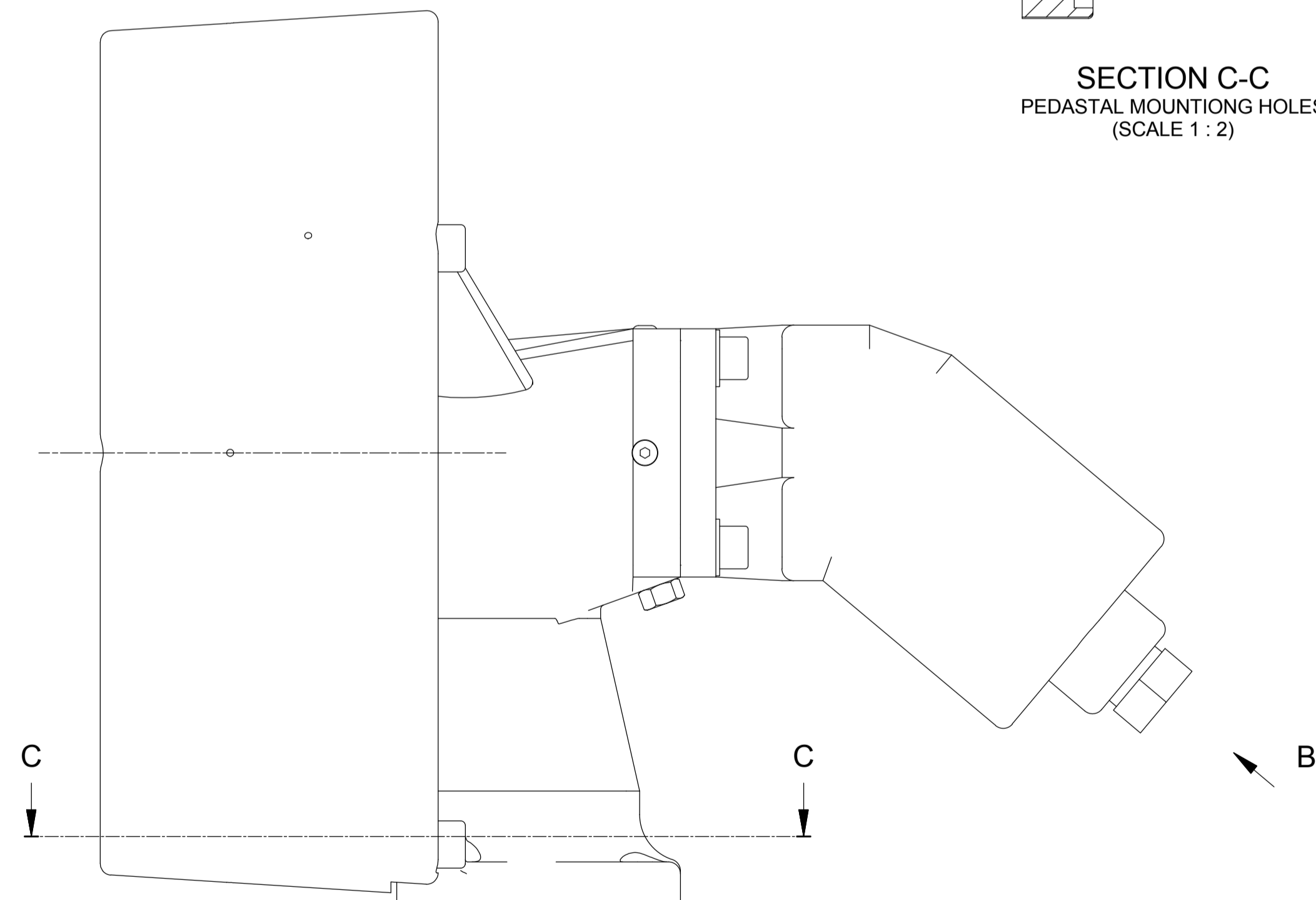
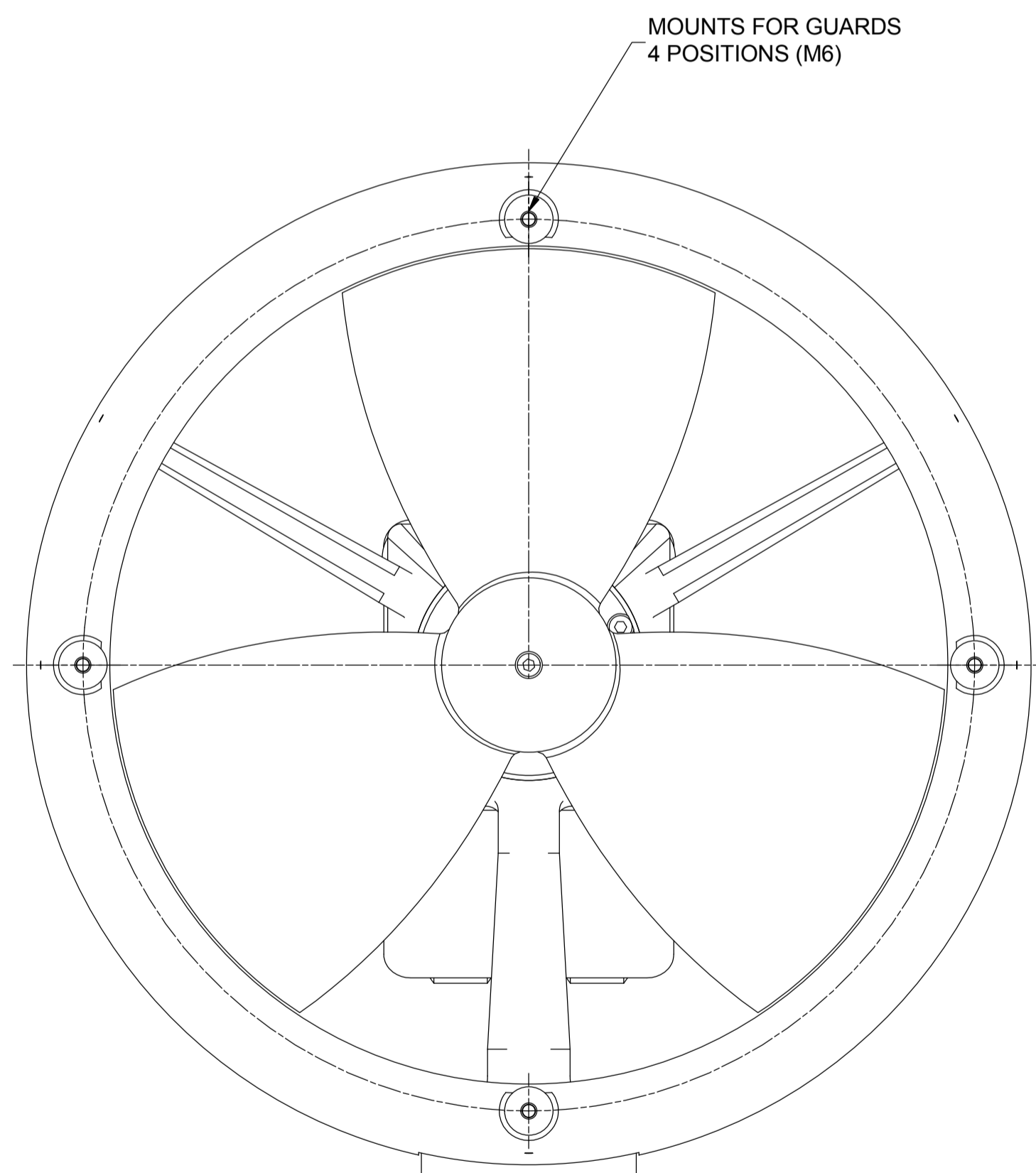
VIEW ON ARROW 'B'
(SCALE 1 : 2)



PART SECTION ON A-A
DETAILING SHAFT BEARING ARRANGEMENT
(SCALE 1 : 1)



SECTION C-C
PEDASTAL MOUNTING HOLES
(SCALE 1 : 2)



NOTES

- CASE DRAIN - SHOULD BE 0 - 3 BAR - SIZE FITTINGS ACCORDINGLY.
- COMPENSATOR - PRESSURE SHOULD BE 0 - 1 BAR.
BEARING HOUSING MUST BE COMPENSATED WITH HYDRAULIC OIL.
BLEED POINT SHOULD BE POSITIONED AT HIGHEST POINT.
- A & B PORTS - MAX PRESSURE 300 BAR.
- ASSEMBLE TO SMD WORK INSTRUCTION DOCUMENT W100.

REV	DATE	CHANGE COMMENT	ZONE	DRAWN	CHECKED	APPD	DATE	EST. MASS	DIMENSIONS	SCALE	PROJECTION 3RD	TITLE		
5	23/05/14	RE-DRAWN TO 3D - PARTS LIST UPDATED, SHT 2 ADDED	-	LO	JCUR	JPG	17 JUNE 14	21 kg	mm	1 : 1		ASSEMBLY THRUSTER CURVETECH 300mm 23cc BA MOTOR		
							DESIGNED	DRAWN	TOLERANCES UNLESS OTHERWISE STATED				MATERIAL:- N/A	
							JAR	MBARNES	DIMENSIONS mm UP TO 100 ± 1.0 100 TO 300 ± 1.5 300 TO 1000 ± 2.0 OVER 1000 ± 3.0				DO NOT SCALE IF IN DOUBT ASK	
							CHECKED	APPROVED	FABRICATION ± 0.15 ± 0.4 ± 0.8 ± 1.0				DRAWING No HTE_300BA-23MK2	
							JAR	PD	MACHINED PART				REV No. 5	
<small>ALL INTELLECTUAL PROPERTY RIGHTS SUBSISTING IN THESE DESIGNS ARE THE PROPERTY OF SOIL MACHINE DYNAMICS LTD. NO COPY IS TO BE MADE WITHOUT THE WRITTEN PERMISSION OF SOIL MACHINE DYNAMICS LTD. ANY PATENT APPLICATIONS, PATENTS AND / OR DESIGN APPLICATIONS, REGISTERED DESIGNS, DESIGN RIGHTS OR COPYRIGHT ARISING FROM OR CONTAINED IN THE DESIGNS ARE THE PROPERTY OF SOIL MACHINE DYNAMICS LTD. AND ALL INFORMATION MUST BE HELD IN THE STRICTEST CONFIDENCE</small>												Soil Machine Dynamics Ltd	SHEET 2 OF 2	A1