

REV	DATE	CHANGE COMMENT	ZONE	DRAWN	CHECKED	APPD	DATE	EST. MASS	DIMENSIONS	SCALE	PROJECTION 3RD	TITLE
3	20/01/11	SHEET 2 ADDED. SHEET 1 RE-ARRANGED.	-	SR	PTC		18 JAN 10	52 kg	mm	1:5		ASSEMBLY THRUSTER 500mm
4	15 AUG 13	SEE SHT 2	-	N MUSE	RJG	RJG						
5	20 OCT 13	SEE SHT 2	-	N MUSE	RJG	RJG						
6	02 APR 14	SEE SHT 2	-	N MUSE	RJP	RJP						
7	10/10/18	SHT 1 - DRAWING VIEWS UPDATE. SHT 2 - BOLT LENGTH	ALL	MvZ	KA	KA						

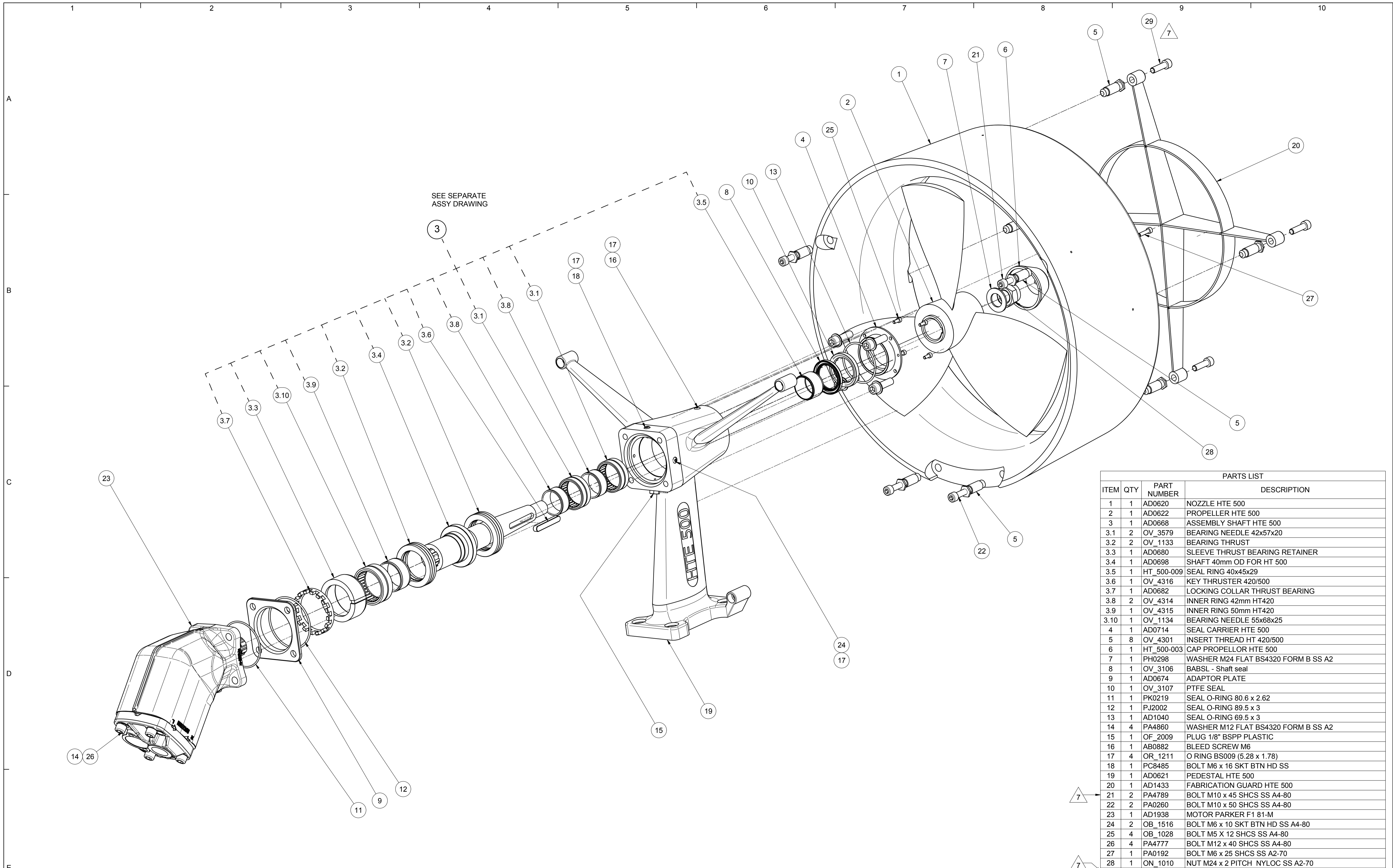
  

DIMENSIONS mm	UP TO 100	100 TO 300	300 TO 1000	OVER 1000	MATERIAL:-
FABRICATION	± 1.0	± 1.5	± 2.0	± 3.0	DO NOT SCALE
MACHINED PART	± 0.15	± 0.4	± 0.8	± 1.0	IF IN DOUBT ASK

ALL INTELLECTUAL PROPERTY RIGHTS SUBSISTING IN THESE DESIGNS ARE THE PROPERTY OF SOIL MACHINE DYNAMICS LTD. NO COPY IS TO BE MADE WITHOUT THE WRITTEN PERMISSION OF SOIL MACHINE DYNAMICS LTD. ANY PATENT APPLICATIONS, PATENTS AND / OR DESIGN APPLICATIONS, REGISTERED DESIGNS, DESIGN RIGHTS OR COPYRIGHT ARISING FROM OR CONTAINED IN THE DESIGNS ARE THE PROPERTY OF SOIL MACHINE DYNAMICS LTD. AND ALL INFORMATION MUST BE HELD IN THE STRICTEST CONFIDENCE	<b>Soil Machine Dynamics Ltd</b>	DRAWING No <b>HTE_500BA</b>	REV No. <b>7</b>	SIZE <b>A1</b>
--	----------------------------------	--------------------------------	---------------------	-------------------

SHEET 1 OF 2



SEE SEPARATE  
ASSY DRAWING

PARTS LIST			
ITEM	QTY	PART NUMBER	DESCRIPTION
1	1	AD0620	NOZZLE HTE 500
2	1	AD0622	PROPELLER HTE 500
3	1	AD0668	ASSEMBLY SHAFT HTE 500
3.1	2	OV_3579	BEARING NEEDLE 42x57x20
3.2	2	OV_1133	BEARING THRUST
3.3	1	AD0680	SLEEVE THRUST BEARING RETAINER
3.4	1	AD0698	SHAFT 40mm OD FOR HT 500
3.5	1	HT_500-009	SEAL RING 40x45x29
3.6	1	OV_4316	KEY THRUSTER 420/500
3.7	1	AD0682	LOCKING COLLAR THRUST BEARING
3.8	2	OV_4314	INNER RING 42mm HT420
3.9	1	OV_4315	INNER RING 50mm HT420
3.10	1	OV_1134	BEARING NEEDLE 55x68x25
4	1	AD0714	SEAL CARRIER HTE 500
5	8	OV_4301	INSERT THREAD HT 420/500
6	1	HT_500-003	CAP PROPELLOR HTE 500
7	1	PH0298	WASHER M24 FLAT BS4320 FORM B SS A2
8	1	OV_3106	BABSL - Shaft seal
9	1	AD0674	ADAPTOR PLATE
10	1	OV_3107	PTFE SEAL
11	1	PK0219	SEAL O-RING 80.6 x 2.62
12	1	PJ2002	SEAL O-RING 89.5 x 3
13	1	AD1040	SEAL O-RING 69.5 x 3
14	4	PA4860	WASHER M12 FLAT BS4320 FORM B SS A2
15	1	OF_2009	PLUG 1/8" BSPP PLASTIC
16	1	AB0882	BLEED SCREW M6
17	4	OR_1211	O RING BS009 (5.28 x 1.78)
18	1	PC8485	BOLT M6 x 16 SKT BTN HD SS
19	1	AD0621	PEDESTAL HTE 500
20	1	AD1433	FABRICATION GUARD HTE 500
21	2	PA4789	BOLT M10 x 45 SHCS SS A4-80
22	2	PA0260	BOLT M10 x 50 SHCS SS A4-80
23	1	AD1938	MOTOR PARKER F1 81-M
24	2	OB_1516	BOLT M6 x 10 SKT BTN HD SS A4-80
25	4	OB_1028	BOLT M5 x 12 SHCS SS A4-80
26	4	PA4777	BOLT M12 x 40 SHCS SS A4-80
27	1	PA0192	BOLT M6 x 25 SHCS SS A2-70
28	1	ON_1010	NUT M24 x 2 PITCH NYLOC SS A2-70
29	4	OB_1144	BOLT M10 x 35 SHCS SS A2-70

REV	DATE	CHANGE COMMENT	ZONE	DRAWN	CHECKED	APPD	DATE	EST. MASS	DIMENSIONS	SCALE	PROJECTION 3RD	TITLE
3	2001/11	SHEET 2 ADDED. SHEET 1 RE-ARRANGED.	-	SR	PTC		18 JAN 10	52 kg	mm	1:5		ASSEMBLY THRUSTER 500mm
4	15 AUG 13	BOLTS FOR GUARD. ITEM 20 NOW 45 LONG WERE 50	10A	N MUSE	R/JG	R/JG						
5	28 OCT 13	DRAWING UP-ISSUED FOR BOM/IFS CORRELATION	-	N MUSE	R/JG	R/JG						
6	02 APR 14	PT NO. PA0260 & PC6791 REPL'D BY PA4789 & PA0260 RESPECT	E9	N MUSE	R/JP	R/JP						
7	10/10/18	GUARD BOLT LENGTH REDUCED FROM 45mm	9A	MvZ	KA	KA						

CHECKED	APPROVED	FABRICATION	MACHINED PART	DIMENSIONS mm	UP TO 100	100 TO 300	300 TO 1000	OVER 1000	MATERIAL:-	DO NOT SCALE IF IN DOUBT ASK	DRAWING No	REV No.	SIZE
HS	HS	±1.0	±0.15	±1.5	±2.0	±3.0	±0.8	±1.0	DO NOT SCALE IF IN DOUBT ASK	HTE_500BA	7	A1	

ALL INTELLECTUAL PROPERTY RIGHTS SUBSISTING IN THESE DESIGNS ARE THE PROPERTY OF SOIL MACHINE DYNAMICS LTD. NO COPY IS TO BE MADE WITHOUT THE WRITTEN PERMISSION OF SOIL MACHINE DYNAMICS LTD. ANY PATENT APPLICATIONS, PATENTS AND / OR DESIGN APPLICATIONS, REGISTERED DESIGNS, DESIGN RIGHTS OR COPYRIGHT ARISING FROM OR CONTAINED IN THE DESIGNS ARE THE PROPERTY OF SOIL MACHINE DYNAMICS LTD. AND ALL INFORMATION MUST BE HELD IN THE STRICTEST CONFIDENCE