

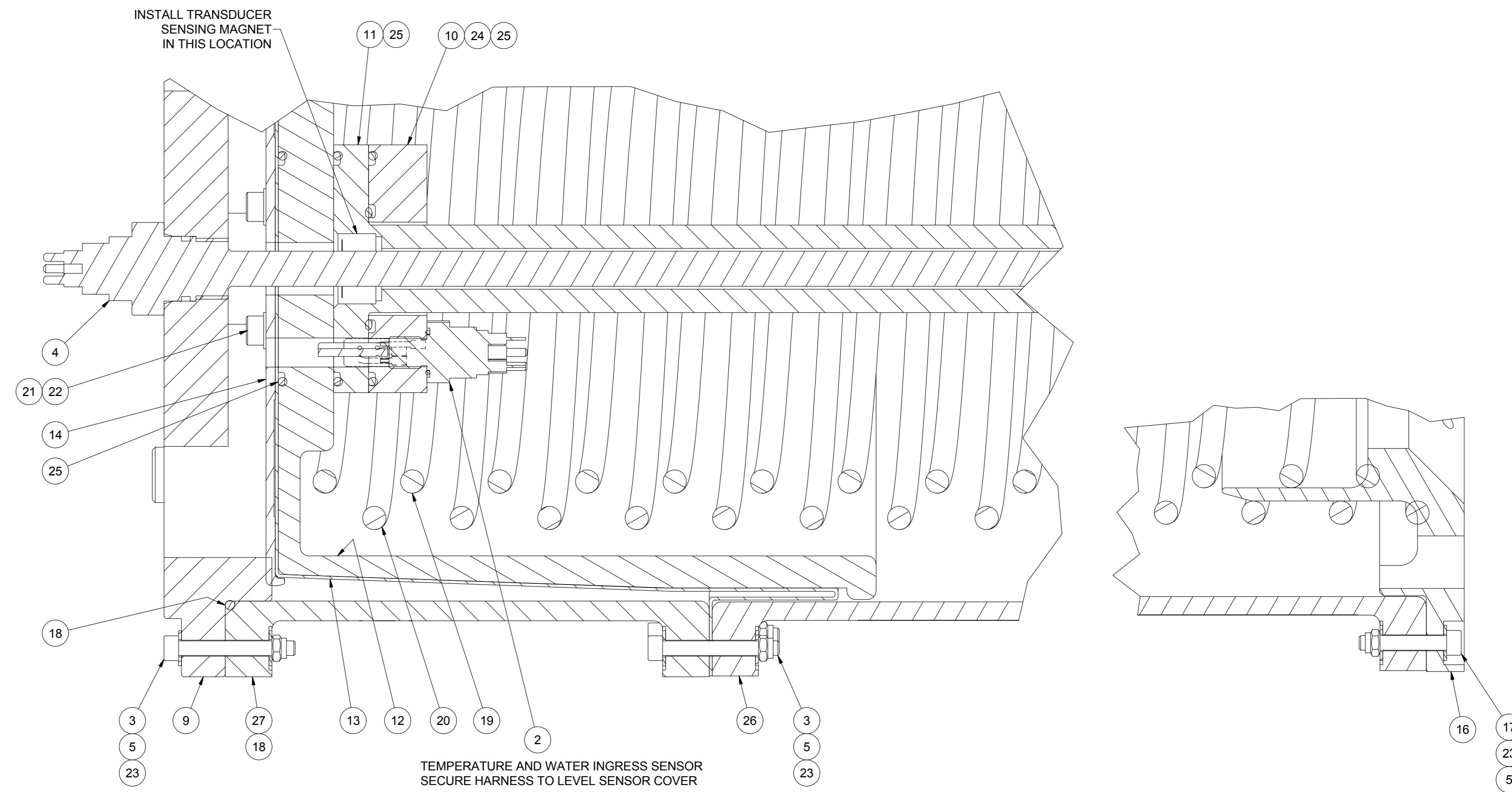
PARTS LIST			
ITEM	QTY	PART No	DESCRIPTION
1	1	AA7426	VALVE RELIEF 30psi (3/4"NPT)
2	1	AB4611	ASSEMBLY TEMP AND WATER INGRESS SENSOR RESERVOIR / COMPENSATOR
3	36	AC7842	BOLT M5 X 40 SHCS SS A4-80
4	1	AD2069	SENSOR LIW 0270 N 0.3A 1
5	48	AD3436	NUT M5 NYLOC SS A4-80
6	2	AJ7337	LABEL CURVETECH LOGO (WHITE ON TRANSPARENT)
7	2	AJ7481	LABEL WARNING SPRING UNDER COMPRESSION
8	1	AK4376	FITTING PLUG 1/4"BSP VSR SS AIR BLEED
9	1	AL4297	RESERVOIR END CAP
10	1	AL4299	SENSOR HOUSING CAP
11	1	AL4300	HOUSING IN-COMP SENSOR
12	1	AL4313	PISTON HEAD EV 4010
13	1	AL4320	ASSEMBLY DIAPHRAGM MODIFIED
14	1	AL4322	PLATE DIAPHRAGM RETAINER
15	2	AL4397	LABEL 11L COMPENSATOR LEVEL GAUGE
16	1	AL4536	PLATE COMPENSATOR LOWER END CAP
17	12	OB_1026	BOLT M5 x 30 SHCS SS A4-80
18	1	OR_1073-1	O-RING BS269 (221.84 x 3.53)
19	1	OV_4519-1	INNER SPRING 7.5 PSI
20	1	OV_4520-1	OUTER SPRING
21	4	PA0546	WASHER M6 FLAT BS4320 FORM B SS A2
22	4	PA4705	BOLT M6 x 45 SHCS A2 SS
23	96	PA4892	WASHER M5 FLAT BS4320 FORM A SS A2
24	1	PC7871	SEAL O-RING 34.5 x 3.0
25	3	PE1755	SEAL O-RING 74.5 X 3.0
26	1	VE_2037	SPRING HOUSING 26 PINT COMPENSATOR
27	1	W00233	PRESSURE HOUSING, 26 PINT COMP

SPECIFICATION (ESTIMATE)		
WEIGHT	IN AIR	28 kg
	IN WATER	19 kg
	IN AIR WITH OIL	38 kg
VOLUME	FULL	10.6 Litre
	EMPTY	0 Litre
PRESSURE	FULL	0.9 bar
	EMPTY	0.4 bar
MAXIMUM WORKING PRESSURE	1 bar	
MAXIMUM OPERATIONAL DEPTH	6000m	
MATERIALS	TOP PLATE & BOLTS - SS HOUSINGS - ENGINEERED PLASTIC DIAPHRAGM - NBR RUBBER	

LEVEL SENSOR - SUBCONN MCBH3M-SS		
PIN	FUNCTION	
1	COMMON	
2	SIGNAL (4-20mA)	
3	INPUT (13 - 32V)	

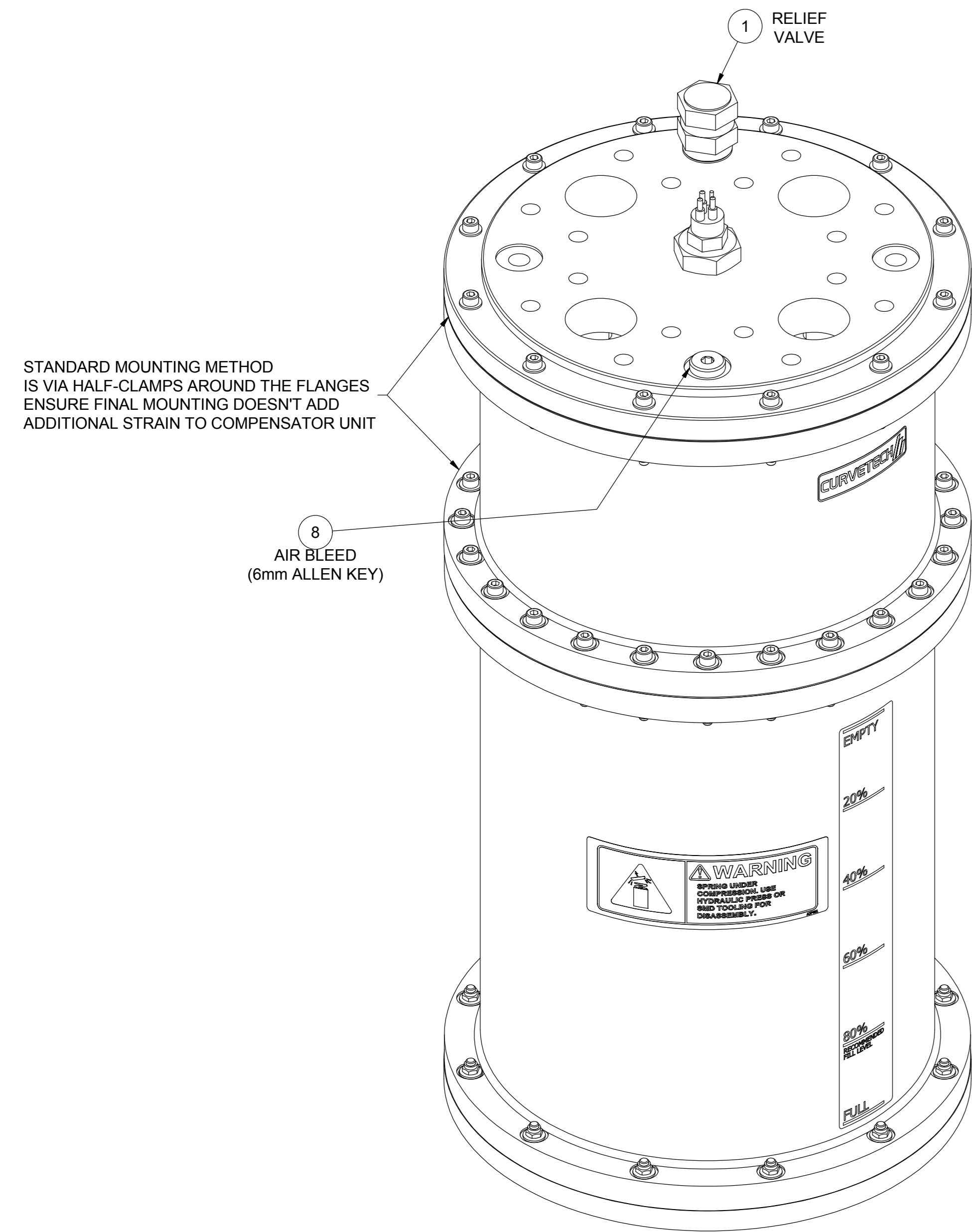
TEMPERATURE / MOISTURE SENSOR - MCBH4MP-SS		
PIN	CONNECTION	FUNCTION
1	WATER INGRESS SENSOR	+24V
2	WATER INGRESS SENSOR	SIGNAL
3	TEMPERATURE SENSOR	+
4	TEMPERATURE SENSOR	-

- NOTES :-
- ASSEMBLE IN ACCORDANCE WITH SMD SPECIFICATION W100.
  - APPLY MOLYKOTE GREASE ON 'O-RINGS' & APPLY AQUALUBE GREASE TO ALL THREADS.
  - BLANK ALL PORTS AFTER BUILD.
  - IF IN DOUBT PLEASE ASK.

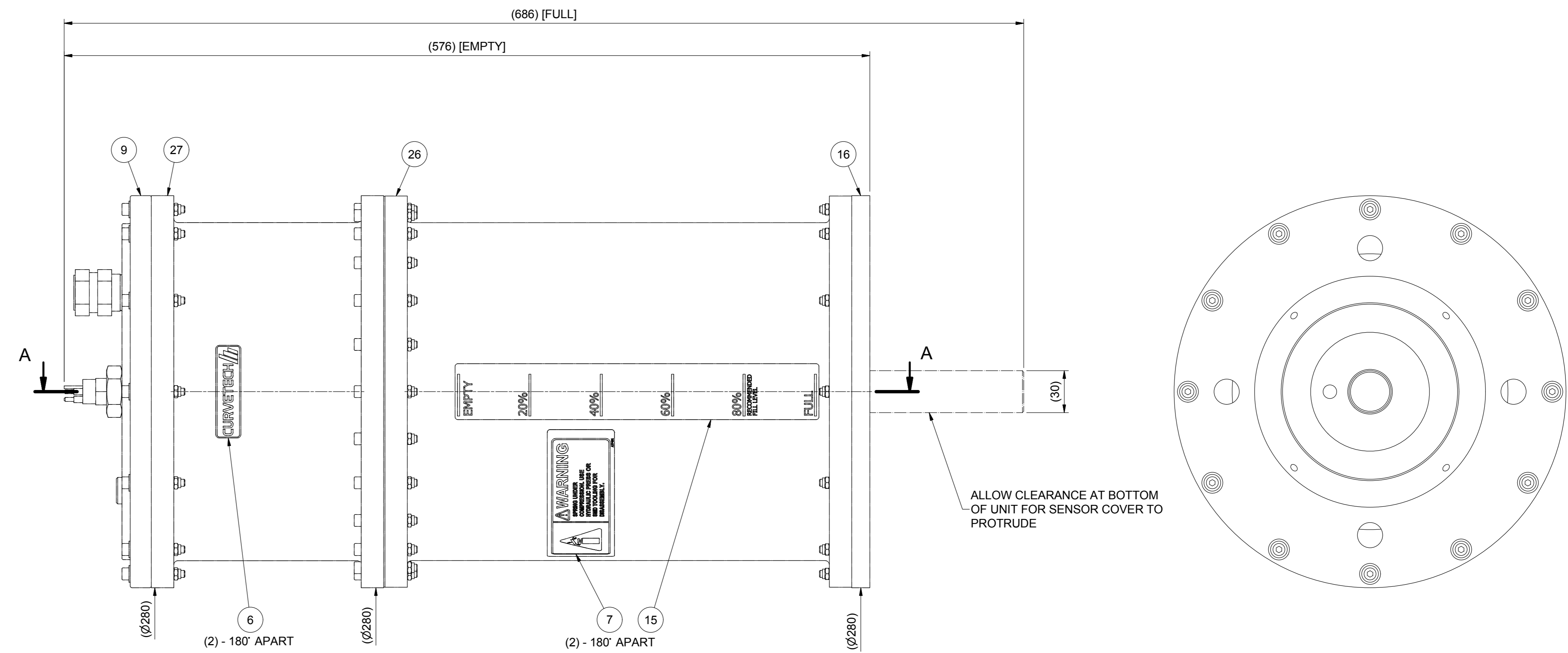
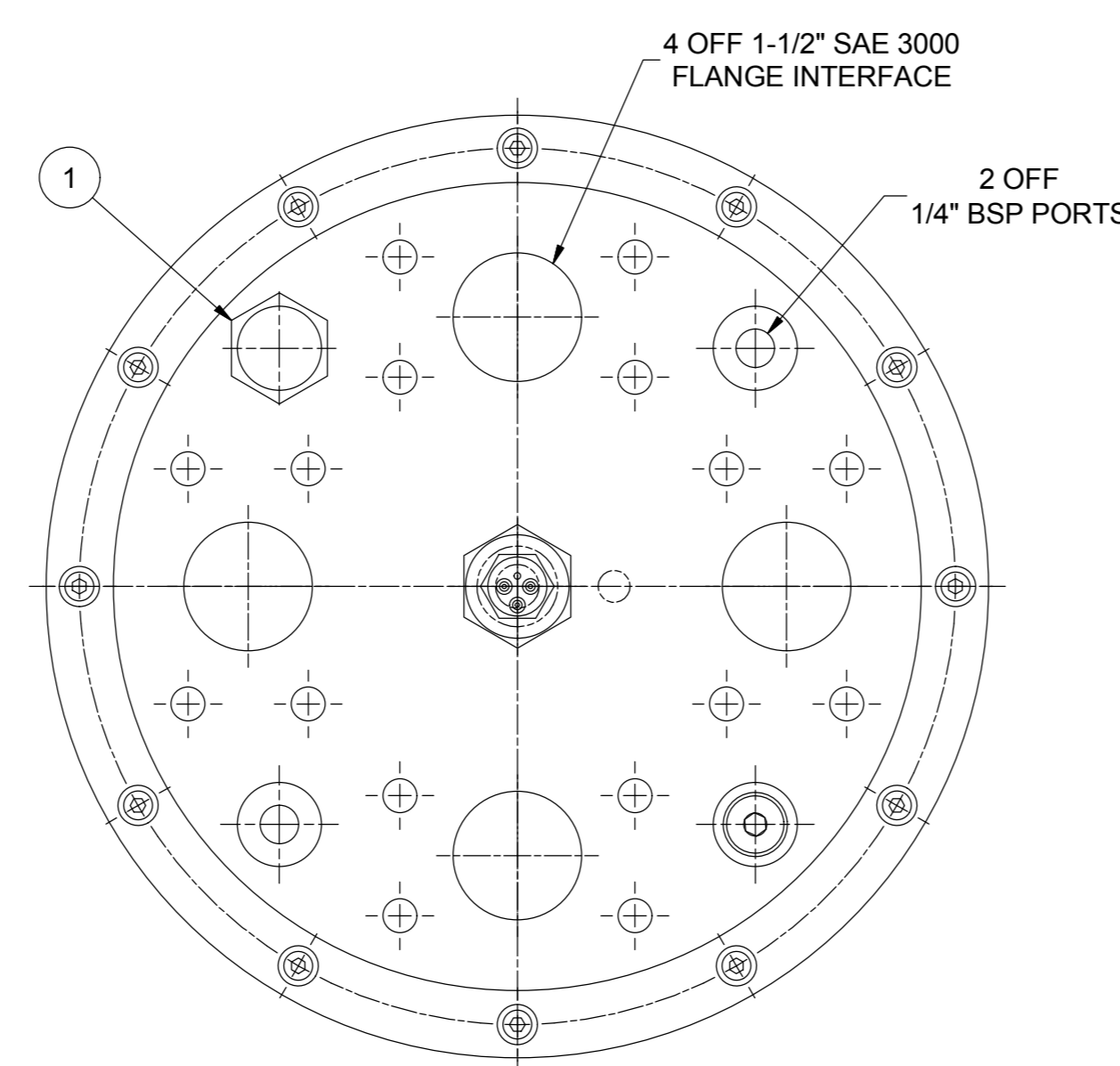


**SECTION A-A**

**WARNING ! DANGER OF INJURY.**  
 CARE MUST BE TAKEN WHEN FITTING OR REMOVING SPRING.  
 A HYDRAULIC PRESS WITH RELEVANT SAFETY FEATURES  
 SHOULD BE USED TO COMPRESS AND RELEASE THE SPRING.



STANDARD MOUNTING METHOD IS VIA HALF-CLAMPS AROUND THE FLANGES ENSURE FINAL MOUNTING DOESNT ADD ADDITIONAL STRAIN TO COMPENSATOR UNIT



REV	DATE	CHANGE COMMENT	ZONE	DRAWN	CHECKED	APPD	DATE	EST. MASS	DIMENSIONS	SCALE	PROJECTION 3RD	TITLE
	07/08/18							28 kg	mm	1:2		ASSEMBLY COMPENSATOR 11L - 4 X 1 1/2\" SAE 3K - 6-13PSI - IMPULSE3 - 4-20mA & WATER/TEMP SENSOR
DESIGNED									TOLERANCES UNLESS OTHERWISE STATED			
DRAWN									UP TO 100 TO OVER			
CHECKED									DIMENSIONS mm			MATERIAL :-
APPROVED									+1.0 +1.5 +2.0 +3.0			DO NOT SCALE
MNZ									+0.15 +0.4 +0.8 +1.0			IF IN DOUBT ASK
									MACHINED PART			DRAWING No
												REV No.
												0
												SIZE
												A0

ALL INTELLECTUAL PROPERTY RIGHTS SUBSISTING IN THESE DESIGNS ARE THE PROPERTY OF SOIL MACHINE DYNAMICS LTD. NO COPY IS TO BE MADE WITHOUT THE WRITTEN PERMISSION OF SOIL MACHINE DYNAMICS LTD. ANY PATENT APPLICATIONS, PATENTS AND / OR DESIGN APPLICATIONS, REGISTERED DESIGNS, DESIGN RIGHTS OR COPYRIGHT ARISING FROM OR CONTAINED IN THE DESIGNS ARE THE PROPERTY OF SOIL MACHINE DYNAMICS LTD. AND ALL INFORMATION MUST BE HELD IN THE STRICTEST CONFIDENCE.

