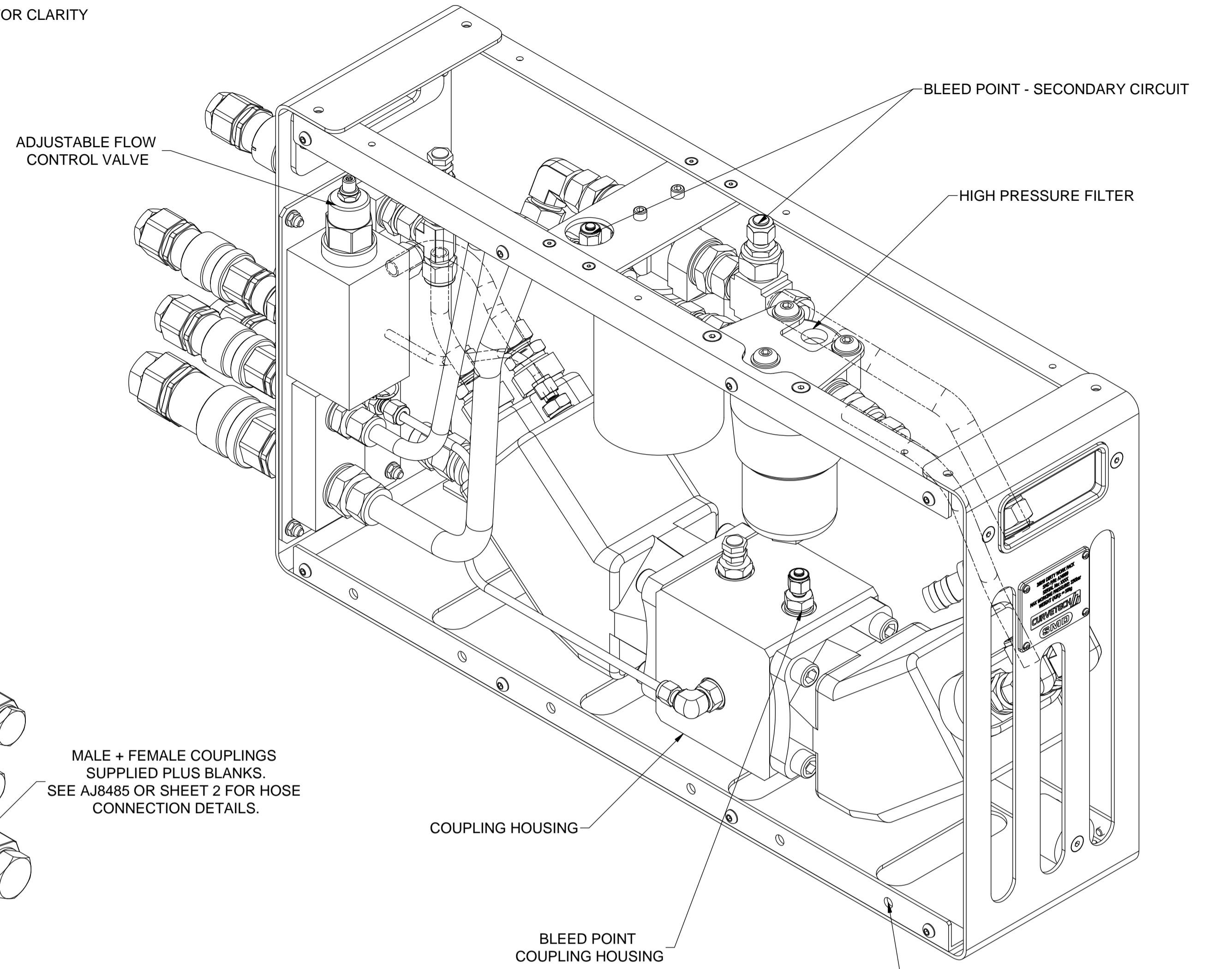
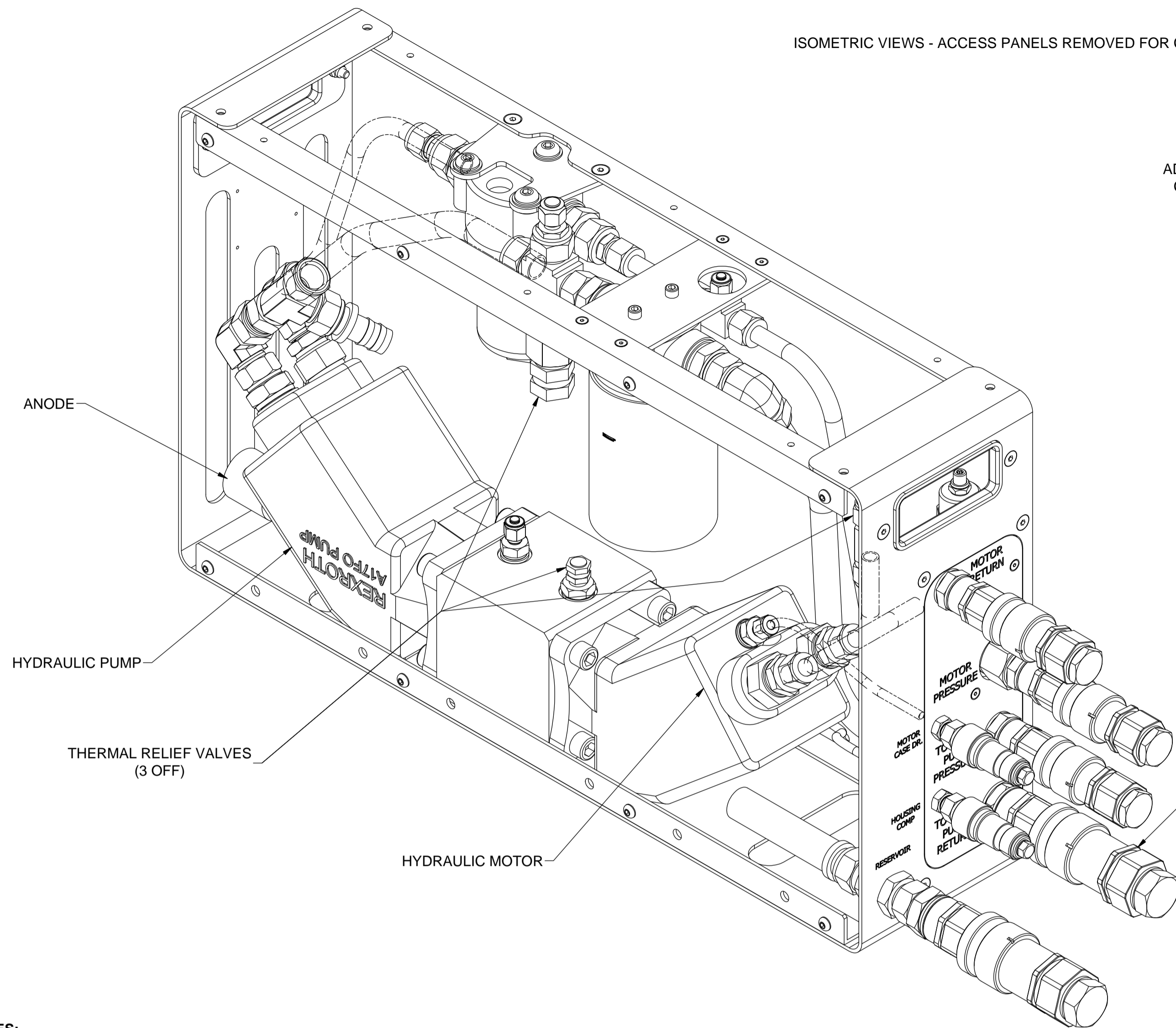


ISOMETRIC VIEWS - ACCESS PANELS REMOVED FOR CLARITY



MALE + FEMALE COUPLINGS SUPPLIED PLUS BLANKS. SEE AJ8485 OR SHEET 2 FOR HOSE CONNECTION DETAILS.

ASSEMBLY NOTES:-
 ASSEMBLE IN ACCORDANCE WITH SMD SPECIFICATION SMDW100. SEE DRAWING AJ8485 FOR HYDRAULIC CIRCUIT DETAILS. TEST IN ACCORDANCE WITH SMD WORK INSTRUCTION ON INITIAL ASSEMBLY FOR OPERATION & MAINTENANCE DETAILS REFER TO SMD MANUAL PRIOR TO FIRST USE

SPECIFICATION:-
POWER
 MAX DRIVE : 33.7 kW
 MAX DELIVERY : 28.7 kW

FLOW & PRESSURE
 DRIVE REQUIREMENT FROM MAIN CIRCUIT: 0 - 230 BAR / 0 - 88 LPM
 DELIVERY: 0 - 210 BAR / 0 - 81 LPM

NOTE: EXACT INPUT / OUTPUT FIGURES WILL VARY DUE TO PUMP / MOTOR EFFICIENCIES. PLEASE CONTACT SMD OR REFER TO DATASHEETS IF IN DOUBT.

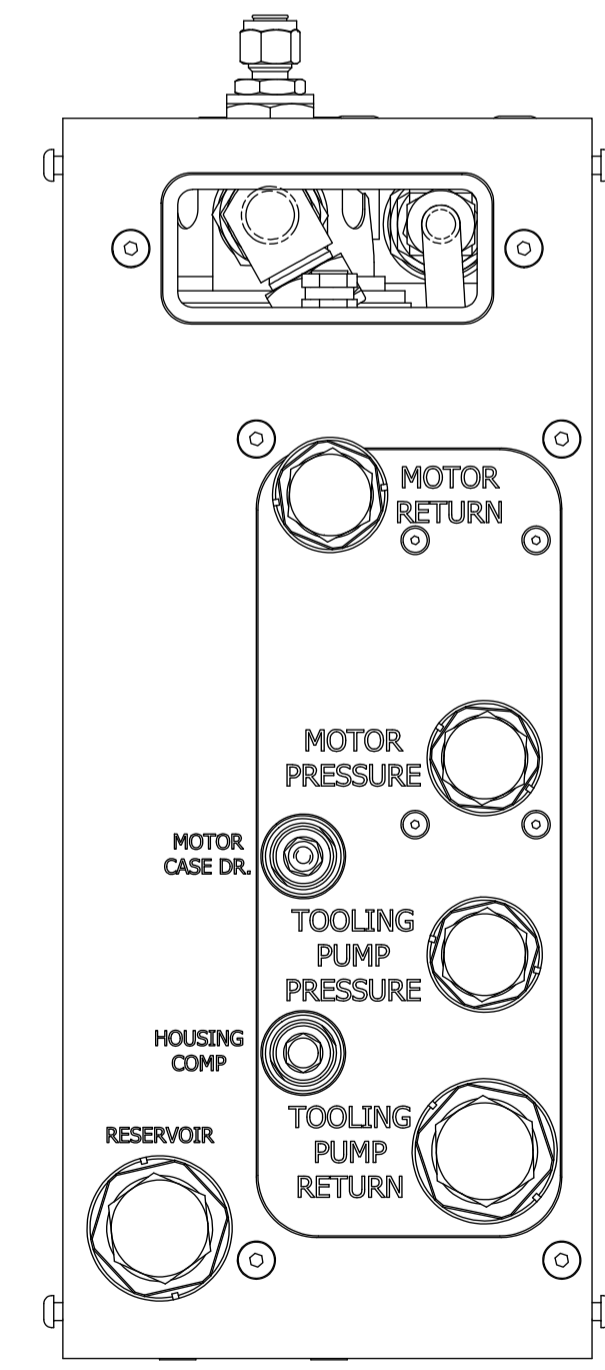
WEIGHTS (ESTIMATED, INCLUDING OIL)
 IN AIR: - 46kg
 IN SEA WATER: - 35kg

RECOMMENDED DRIVE & DELIVERY OIL
 HVI TYPE MINERAL OIL - DEPENDING ON OIL TEMPERATURE THE FOLLOWING VISCOSITY GRADES SHOULD BE USED:
 25° - 50°: 22cSt
 40° - 60°: 32cSt
 50° - 70°: 46cSt
 60° - 80°: 68cSt
 ENVIRONMENTALLY FRIENDLY OILS - SMD RECOMMEND THE USE OF: PANOLIN ATLANTIS 22 - 32.
 PLEASE CONTACT SMD FOR ADVICE ON OTHER OIL TYPES

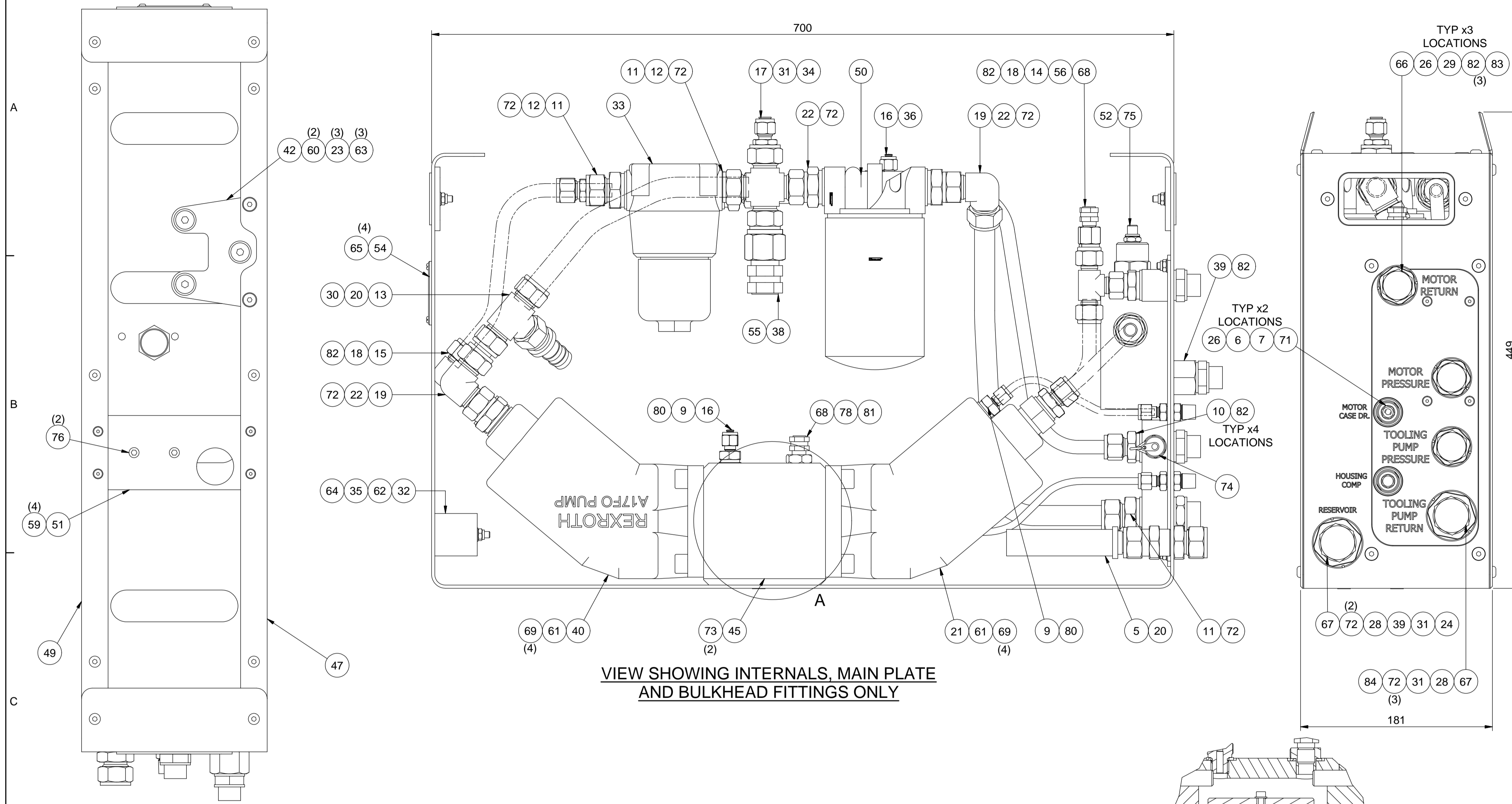
MAIN CIRCUIT OIL SHOULD BE MAINTAINED AT ISO 4406-16/14/12 (NAS 5-6) CLEANLINESS OR BETTER. TOOLING CIRUIT OIL SHOULD IDEALLY BE 18/16/13 (NAS 7) OR BETTER. DIRTY OIL WILL SHORTEN THE LIFE OF CIRCUIT COMPONENTS

INSTALLATION:-
 SECURELY FASTEN THE UNIT DOWN USING THE MOUNTING HOLES (AT LEAST 4 EACH SIDE SHOULD BE USED)
 MAKE THE HYDRAULIC CONNECTIONS USING SUITABLY PRESSURE RATED AND SIZED COMPONENTS. COMPENSATE THE COUPLING HOUSING WITH HYDRAULIC OIL UP TO A MAXIMUM PRESSURE OF 1 BAR.
 CONNECT THE MOTOR CASE DRAIN HOSE TO THE MAIN CIRCUIT RESERVOIR / RETURN MANIFOLD (MAXIMUM FLOW 2 LPM)
 CONNECT THE MAIN CIRCUIT DRIVE HOSES TO THE MOTOR QUICK DIS-CONNECTS
 CONNECT THE TOOLING DELIVERY HOSES TO THE PUMP QUICK DIS-CONNECTS
 CONNECT THE TOOLING RESEVOIR TO THE RESEVOIR QUICK DIS-CONNECT
 ENSURE ALL CONNECTIONS CORRECTLY MADE PRIOR TO FIRST OPERATION.
 FOLLOW A CONTROLLED START-UP PROCEDURE ON FIRST USE AND FOR DECK CHECKS.
 BLEED AIR FROM THE MOTOR HOUSING AND OTHER CIRCUITS PRIOR TO DIVES.
 SEE AJ8485 FOR EXAMPLES OF CONNECTIONS AND USE OF THE DIRTY WORK PACK.
 IF IN DOUBT CONTACT SMD PRIOR TO OPERATIONS.

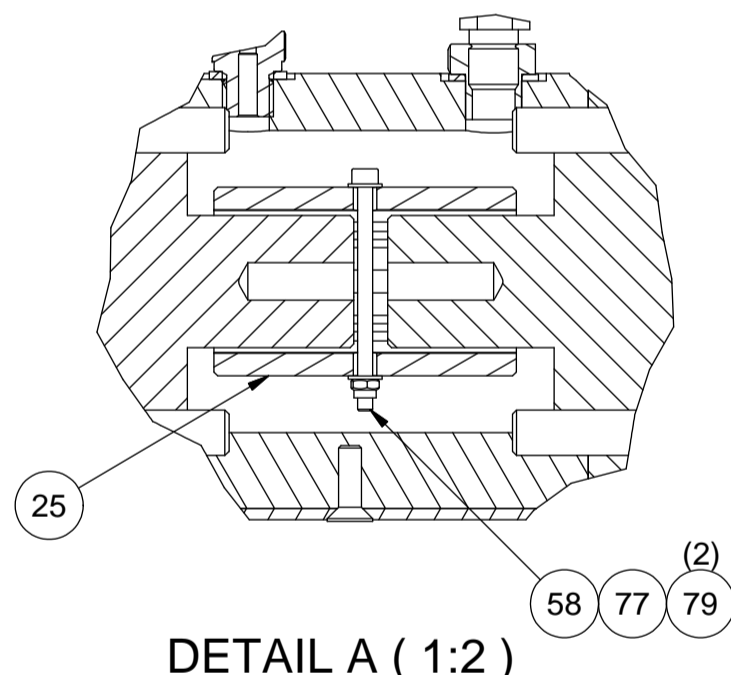
OPERATING DESCRIPTION:-
 THE DIRTY WORK PACK IS DRIVEN FROM THE MAIN CONSTANT PRESSURE CIRCUIT. WHEN ACTIVATED A FLOW OF OIL FROM THE MAIN CIRCUIT IS FED TO THE FIXED DISPLACEMENT DRIVE MOTOR AT A CONSTANT PRESSURE. THE MOTOR DIRECT DRIVES A CORRESPONDING FIXED DISPLACEMENT PUMP OUTPUTTING OIL INTO THE TOOLING CIRCUIT AS THE FLOW INCREASES THE MOTOR-PUMP SPEED INCREASES UP TO THE MAXIMUM SETTING ON THE PRESSURE COMPENSATED FLOW CONTROL. TOOLING CIRCUIT PRESSURE IS LIMITED BY INPUT PRESSURE AT THE MOTOR - WHICH MUST BE LIMITED. IF TOOL OPERATION REQUIRES EXACT PRESSURE AND FLOW VALUES TEST SYSTEM INITIALLY ON DECK PRIOR TO OPRERATION.



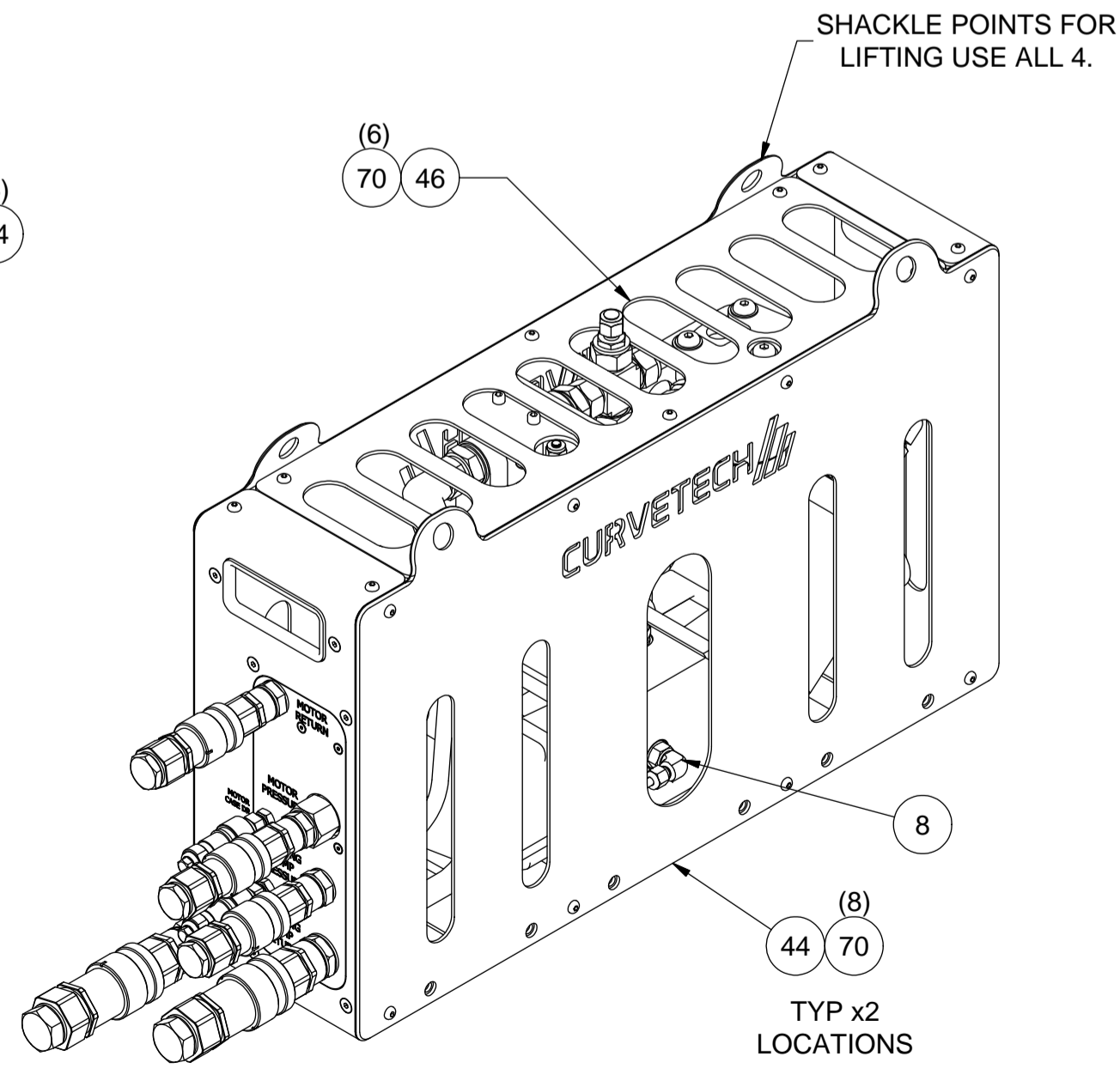
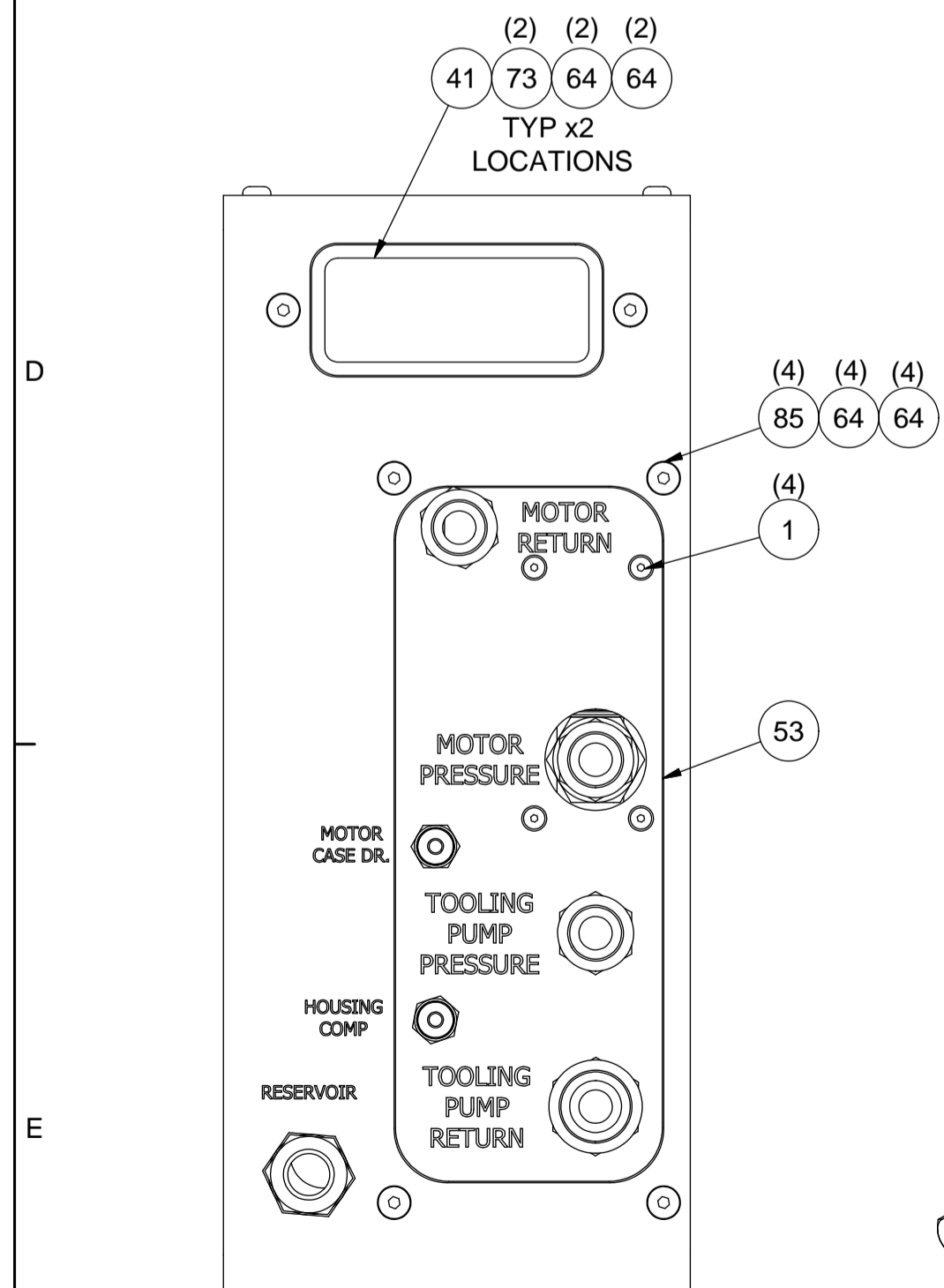
REV	DATE	CHANGE COMMENT	ZONE	DRAWN	CHECKED	APPD	DATE	EST. MASS	DIMENSIONS	SCALE	PROJECTION 3RD	TITLE		
	01/06/16						SEE NOTES		mm	1:5		ASSEMBLY DIRTY WORK PACK 28kW		
				DAK	DAK				TOLERANCES UNLESS OTHERWISE STATED			MATERIAL:- N/A		
				CHECKED	APPROVED				DIMENSIONS mm			DO NOT SCALE		
				PM	MvZ				FABRICATION	±1.0	±1.5	±2.0		
									MACHINED PART	±0.15	±0.4	±0.8		
ALL INTELLECTUAL PROPERTY RIGHTS SUBSISTING IN THESE DESIGNS ARE THE PROPERTY OF SOIL MACHINE DYNAMICS LTD. NO COPY IS TO BE MADE WITHOUT THE WRITTEN PERMISSION OF SOIL MACHINE DYNAMICS LTD. ANY PATENT APPLICATIONS, PATENTS AND / OR DESIGN APPLICATIONS, REGISTERED DESIGNS, DESIGN RIGHTS OR COPYRIGHT ARISING FROM OR CONTAINED IN THE DESIGNS ARE THE PROPERTY OF SOIL MACHINE DYNAMICS LTD. AND ALL INFORMATION MUST BE HELD IN THE STRICTEST CONFIDENCE														
SMD Soil Machine Dynamics Ltd										DRAWING No			REV No.	SIZE
										AJ4889			0	A1
SHEET 1 OF 2														



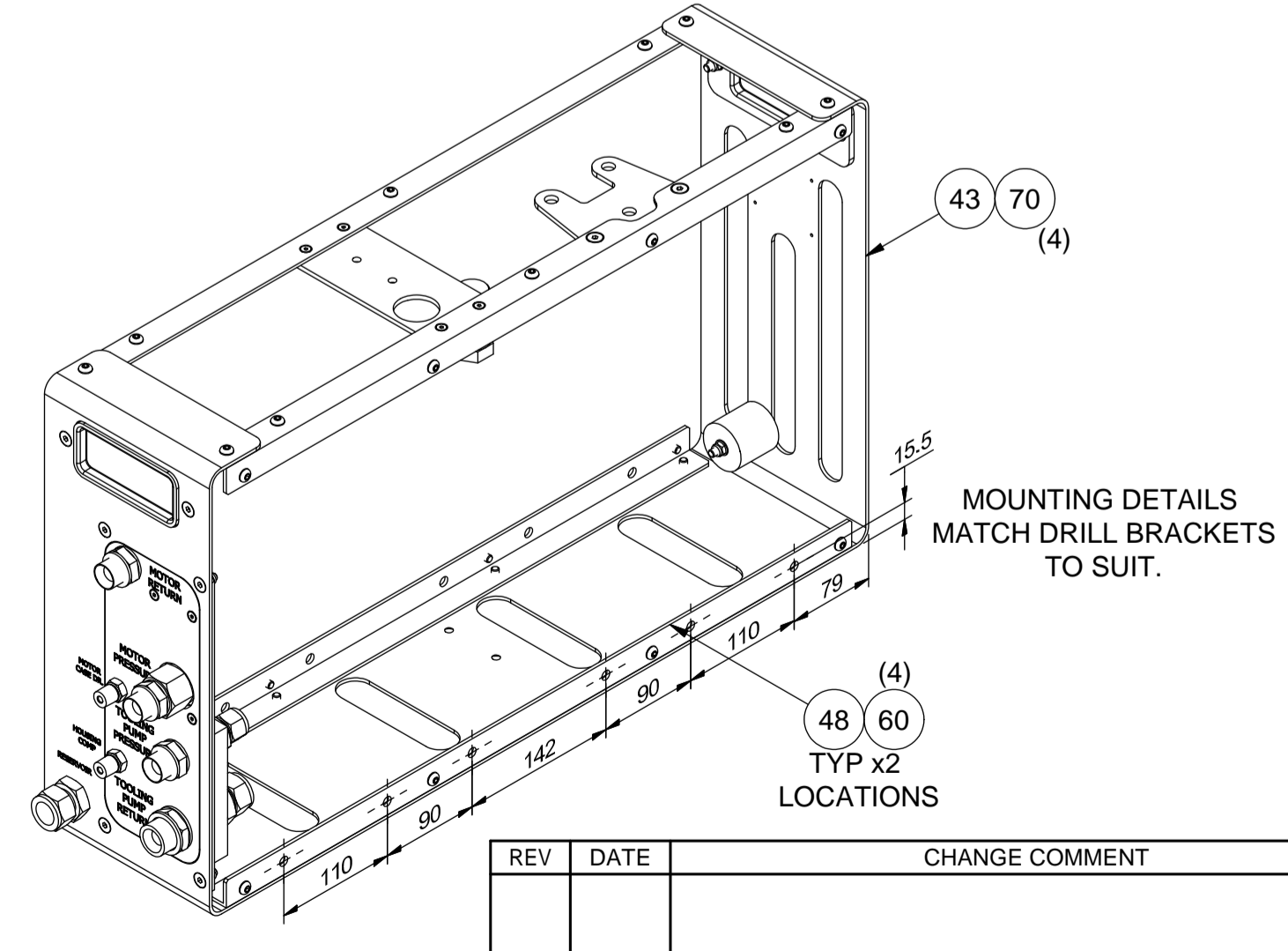
VIEW SHOWING INTERNALS, MAIN PLATE AND BULKHEAD FITTINGS ONLY



DETAIL A (1:2)



ISOMETRIC VIEWS (SCALE 1:5)



ITEM		QTY	PART No	DESCRIPTION
1	4	AA2745	BOLT M4 x 12 SKT CSK HD SS A2-70	
2	1	AA3086	TUBE 1/4" X 0.036WT SEAMLESS SS (6M) ASTM A269 A/W 316/316L	
3	1	AA3088	TUBE 1/2" x 0.064WT SEAMLESS SS (6M) ASTM A269 A/W 316/316L	
4	1	AA3089	TUBE 3/4" x 0.083wt SEAMLESS SS (6M) ASTM A269 A/W 316/316L	
5	1	AA3099	HOSE PUSH-LOCK 3/4" 831-12 (BLACK)	
6	2	AA3117	NIPPLE QUICK-CONNECT 1/4"	
7	2	AA3118	COUPLER QUICK CONNECT 1/4"NPT	
8	1	AA3133	FITTING ELBOW POS MALE 1/4" BSPP X 1/4" TUBE SWAGelok SS-400-2-4PR MWP 315 bar	
9	2	AA3150	CONNECTOR MALE 1/4"BSPP x 1/4" TUBE SS	
10	4	AA3151	CONNECTOR MALE 1/2"BSPP x 1/2" TUBE	
11	3	AA3155	CONNECTOR MALE 3/4"BSPP x 3/4" TUBE	
12	2	AA3156	REDUCER 1/2" TUBE x 3/4" STANDPIPE SWAGelok SS-810-R-12	
13	1	AA3170	UNION TEE 3/4" TUBE	
14	1	AA3172	UNION TEE 1/2" TUBE	
15	1	AA3188	FITTING UNION ELBOW 1/2" TUBE	
16	2	AA3195	FITTING PLUG 1/4" SS A4 - SWAGelok SS-400-P	
17	1	AA3214	PLUG 3/8" SWAGelok SS	
18	2	AA3236	ADAPTOR MALE 1/2"BSPP 1/2" STANDPIPE / SWAGelok SS-8-TA-1-8RS	
19	2	AA3237	FITTING ELBOW UNION 3/4" / SWAGelok SS-1210-9	
20	2	AA3254	FITTING ADAPTOR 3/4" STANDPIPE 3/4" PUSH-LOCK SS	
21	1	AA7773	HYD MOTOR 32CC LIGHT WEIGHT	
22	4	AA7826	ADAPTOR MALE 3/4"BSP x 3/4" STANDPIPE SWAGelok SS-12-TA-1-12RS	
23	3	AA8034	BOLT M10 x 16 SKT BTN HD SS A2-70	
24	2	AB3914	CONNECTOR MALE BULKHEAD 1/4"NPT 1/4" TUBE - SWAGelok SS-400-11-4	
25	1	AB4901	COUPLING SHAFT KFA MOTOR / PUMP	
26	3	AB7096	COUPLING Q/R FEMALE 1/2" BSP x ISO 10 S/S FLAT FACE ISO 16028 MAX WP 350BAR	
27	3	AB7097	COUPLING Q/R MALE 1/2" BSP x ISO 10 S/S FLAT FACE ISO 16028 MAX WP 350BAR	
28	2	AB8474	COUPLING Q/R FEMALE 3/4" BSP x ISO 12.5 S/S FLAT FACE ISO 16028 MAX WP 350BAR	
29	2	AB8475	COUPLING Q/R MALE 3/4" BSP x ISO 12.5 S/S FLAT FACE ISO 16028 MAX WP 350BAR	
30	1	AB9111	PORT CONNECTOR 3/4"	
31	1	AC0550	REDUCER 3/4" STANDPIPE x 3/8" TUBE	
32	1	AC6815	ANODE OD40 X 40THK MAGNESIUM	
33	1	AD1734	FILTER PRESSURE 3/4"BSP	
34	1	AD3702	FITTING CROSS 3/4" TUBE SS SWAGelok SS-1210-4	
35	1	AD5085	BOLT M6 x 55 SKT CSK HD SS A2-70	
36	1	AD7759	REDUCING UNION TEE 1/2" x 1/2" x 1/4" / SWAGelok SS-810-3-8-4	
37	1	AD8898	CONNECTOR BULKHEAD UNION 3/4" TUBE SS	
38	1	AH3498	VALVE RELIEF 50psi (3/4"NPT)	
39	1	AH7844	FITTING MFA 1/2"BSPP SS	
40	1	AJ3592	PUMP REXROTH 32CC A17FO032/10NRW0E81-0	
41	2	AJ4137	HANDLE DIRTY WORK PACK	
42	1	AJ4287	PLATE HP FILTER BRACKET DIRTY WORK PACK	
43	1	AJ4890	PLATE DIRTY WORK PACK BODY	
44	2	AJ4891	PLATE DIRTY WORK PACK	
45	1	AJ5179	HOUSING PUMP / MOTOR COUPLING	
46	1	AJ5194	PLATE REAR TOP COVER DIRTY WORK PACK	
47	1	AJ5195	BRACKET PORT SIDE PLATE MOUNT DIRTY WORK PACK	
48	2	AJ5196	BRACKET LOWER SIDE PLATE MOUNT DIRTY WORK PACK	
49	1	AJ5197	BRACKET STBD SIDE PLATE MOUNT DIRTY WORK PACK	
50	1	AJ5210	FILTER RETURN - SPIN ON - SAF-11-25-0 STAUFF	
51	1	AJ5211	PLATE LP FILTER BRACKET STBD DIRTY WORK PACK	
52	1	AJ7407	FLOW CONTROL VALVE HOUSING	
53	1	AJ7651	FRONT PANEL DIRTY WORK PACK	
54	1	AJ8397	LABEL IDENTIFICATION DIRTY WORK PACK 28kW	
55	1	AJ8418	ADAPTOR FEMALE 3/4"NPT X 3/4"STANDPIPE SWAGelok SS-12-TA-7-12	
56	1	AJ8427	ADAPTOR FEMALE 1/4"NPT X 1/2"STANDPIPE SWAGelok SS-8-TA-7-4	
57	1	AJ8485	DRAWING DIRTY WORK PACK 28kW HYDRAULIC SCHEMATIC	
58	1	OB_1254	BOLT M4 x 60 SHCS SS A2-70	
59	4	OB_1473	BOLT M4 x 8 SKT CSK HD SS A2-70	
60	10	OB_1486	BOLT M6 x 10 SKT CSK HD SS A2-70	
61	2	OV_3023	O-RING BS 152	
62	9	PA0078	NUT M6 NYLOC SS A2-70	
63	3	PA0528	WASHER M10 FLAT BS4320 FORM B SS A2	
64	9	PA0546	WASHER M6 FLAT BS4320 FORM B SS A2	
65	4	PA5996	BOLT M3 x 6 SLTD PAN HD SS A2-70	
66	3	PB1126	FITTING PLUG 1/2" BSP HEX SS	
67	2	PB2085	FITTING PLUG 3/4" BSP HEX SS	
68	2	PB2837	VALVE RELIEF 50psi (1/4"NPT)	
69	8	PB4759	BOLT M12 x 35 SHCS SS A4-80	
70	26	PB5793	BOLT M6 x 10 SKT BTN HD SS A2-70	
71	2	PB5944	FITTING PLUG 1/4"NPT HEX SS	
72	11	PB7256	SEAL BONDED 3/4"BSP SS-1.4436 (316S33) SELF CENTERING NBR90	
73	6	PC0956	BOLT M6 x 20 SKT CSK HD SS A2-70	
74	1	PC1217	TEST POINT 1/8" BSP SS	
75	1	PC2265	VALVE FDEA-LAN/V FLOW CONTROL	
76	2	PC2749	BOLT 1/4"UNC X 3/4" SHCS SS	
77	1	PH2452	NUT M4 NYLOC SS A2-70	
78	1	PK3432	FITTING MFA 3/8"BSP x 1/4" NPT SS	
79	2	WA0350	WASHER M4 FLAT BS4320 FORM A SS A2	
80	2	WA1077	SEAL BONDED 1/4" BSP SS-1.4436 (316S33) SELF CENTERING NBR90	
81	1	WA1078	SEAL BONDED 3/8"BSP SS-1.4436 (316S33) / SELF CENTERING NBR90	
82	16	WA1079	SEAL BONDED 1/2"BSP SS-1.4436 (316S33) SELF CENTERING NBR90	
83	3	WA1085	FITTING MMA 1/2" BSP SS	
84	1	WA1086	FITTING MMA 3/4" BSP SS	
85	4	WA1485	BOLT M6 X 16 SKT CSK HD SS A2-70	

REV	DATE	CHANGE COMMENT	ZONE	DRAWN	CHECKED	APPD	DATE	EST. MASS	DIMENSIONS	SCALE	PROJECTION 3RD	TITLE
	01/06/16	SEE NOTES							mm	1:2.5		ASSEMBLY DIRTY WORK PACK 28kW
DESIGNED	DAK	TOLERANCES UNLESS OTHERWISE STATED							UP TO 100	100 TO 300	300 TO 1000	MATERIAL:- N/A
CHECKED	APPROVED	FABRICATION							±1.0	±1.5	±2.0	DO NOT SCALE
PM	MvZ	MACHINED PART							±0.15	±0.4	±0.8	IF IN DOUBT ASK

ALL INTELLECTUAL PROPERTY RIGHTS SUBSISTING IN THESE DESIGNS ARE THE PROPERTY OF SOIL MACHINE DYNAMICS LTD. NO COPY IS TO BE MADE WITHOUT THE WRITTEN PERMISSION OF SOIL MACHINE DYNAMICS LTD. ANY PATENT APPLICATIONS, PATENTS AND / OR DESIGN APPLICATIONS, REGISTERED DESIGNS, DESIGN RIGHTS OR COPYRIGHT ARISING FROM OR CONTAINED IN THE DESIGNS ARE THE PROPERTY OF SOIL MACHINE DYNAMICS LTD. AND ALL INFORMATION MUST BE HELD IN THE STRICTEST CONFIDENCE