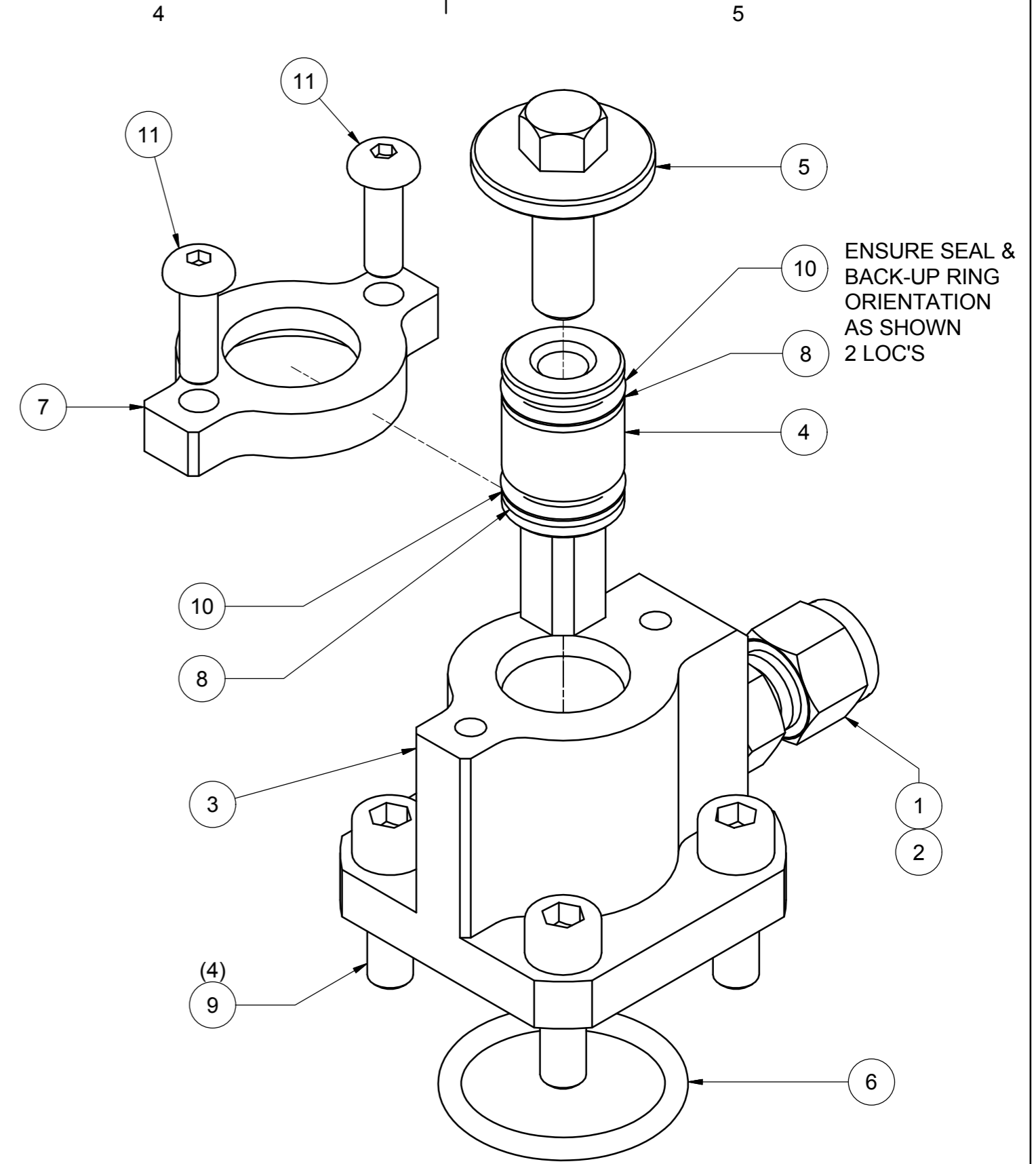
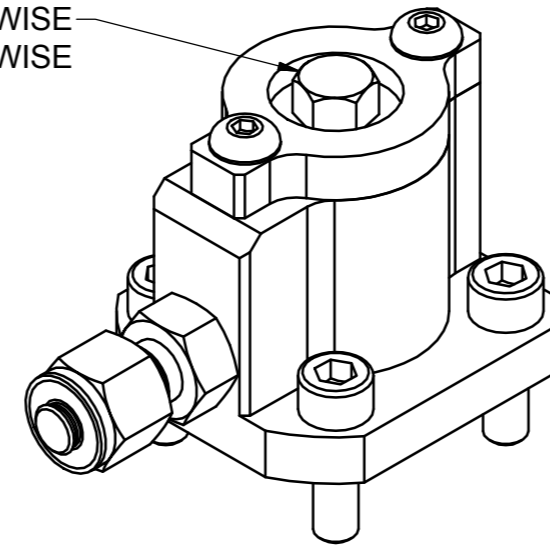
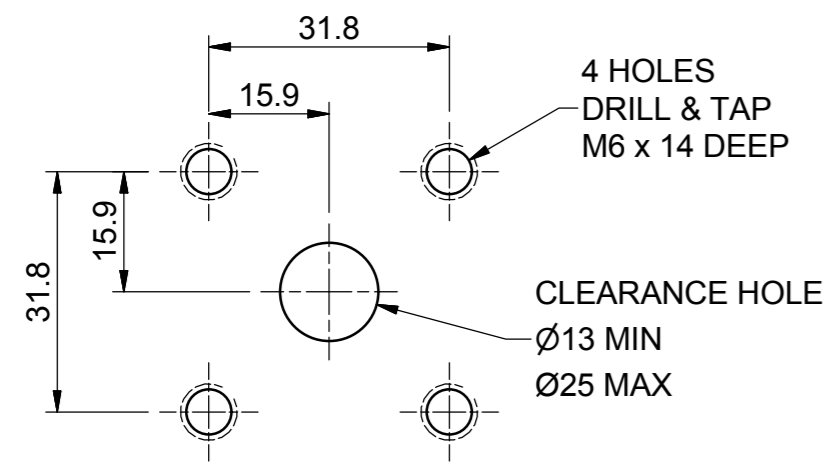
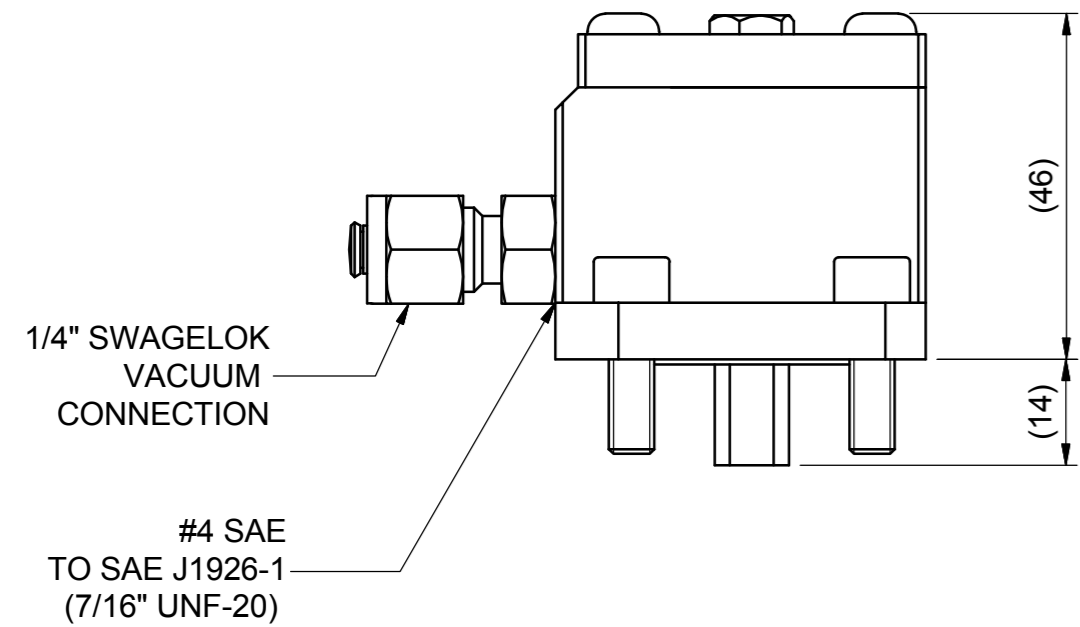


10mm SOCKET
OPEN - TURN CLOCKWISE
CLOSE - ANTI-CLOCKWISE



ISOMETRIC VIEWS

EXPLODED VIEW
(SCALE 1.5 : 1)



INTERFACE DETAIL

NOTES

ASSEMBLY

1. ASSEMBLE IN ACCORDANCE WITH SMD SPECIFICATION W100

TO PULL VACUUM

1. ATTACH VACUUM PUMP WITH ISOLATOR VALVE + GAUGE AS REQUIRED TO 1/4" SWAGELOK FITTING (7/16" UNF PORT)
2. OPEN VACUUM VENT SCREW UNTIL PLUG PULLS UP AGAINST SHOULDER
3. TURN PUMP ON + PULL VACUUM TO REQUIRED LEVEL
4. CLOSE ISOLATING VALVE + CHECK THAT VACUUM IS HELD
5. CLOSE (CCW) VACUUM VENT SCREW UNTIL PLUG PUSHES AGAINST OPPOSITE SHOULDER
6. REMOVE VACUUM PUMP EQUIPMENT. FIT 1/4" SWAGELOK PLUG.
7. TO RELEASE VACUUM OPEN VACUUM VENT SCREW (CW). REMOVE 1/4" PLUG.

PARTS LIST				
ITEM	PART No	DESCRIPTION	QTY	
1	AA3195	FITTING PLUG 1/4" SS A4 - SWAGELOK SS-400-P	1	
2	AA6606	CONNECTOR MALE 7/16" UNF - 1/4" TUBE SWAGELOK SS-400-1-4ST	1	
3	AD3321	HOUSING VACUUM PORT	1	
4	AD3322	PLUG VACUUM VENT	1	
5	AD3323	SCREW VACUUM VENT	1	
6	AD3372	SEAL O-RING (26.5 x 3.0)	1	
7	AD7283	CAP VACUUM PORT	1	
8	AD7293	SEAL ANTI-EXTRUSION RING 13.1 x 1.6	2	
9	PB9266	BOLT M6 x 20 SHCS SS A2-70	4	
10	PG0310	SEAL O-RING 13.1 x 1.6 - NBR90	2	
11	PG5112	BOLT M5 x 16 SKT BTN HD SS A2-70	2	

REV	DATE	CHANGE COMMENT	ZONE	DRAWN	CHECKED	APPD	DATE	EST. MASS	DIMENSIONS	SCALE	PROJECTION 3RD	TITLE	
1	20.10.10	ITEMS 1 & 2 ADDED	-	PTC	JPG	JPG	23/01/2010	0.4 kg	mm	1:1		ASSEMBLY VACUUM PORT 6000m	
2	23/02/11	ASSEMBLY NOTE CHANGED TO SPEC W100.	-	SR	POT	JPG							
3	25/04/14	SECOND O-RING ADDED TO PLUG.	-	LO	PIB	JPG							
4	03/02/17	REARRANGMENT OF DRAWING VIEWS	ALL	LO	MvZ	MvZ							
							DESIGNED	DRAWN	TOLERANCES UNLESS OTHERWISE STATED				
							JPG	BH	DIMENSIONS mm	UP TO 100	100 TO 300	300 TO 1000	OVER 1000
							CHECKED	APPROVED	FABRICATION	± 1.0	± 1.5	± 2.0	± 3.0
							JPG	JPG	MACHINED PART	± 0.15	± 0.4	± 0.8	± 1.0
<p>ALL INTELLECTUAL PROPERTY RIGHTS SUBSISTING IN THESE DESIGNS ARE THE PROPERTY OF SOIL MACHINE DYNAMICS LTD. NO COPY IS TO BE MADE WITHOUT THE WRITTEN PERMISSION OF SOIL MACHINE DYNAMICS LTD. ANY PATENT APPLICATIONS, PATENTS AND / OR DESIGN APPLICATIONS, REGISTERED DESIGNS, DESIGN RIGHTS OR COPYRIGHT ARISING FROM OR CONTAINED IN THE DESIGNS ARE THE PROPERTY OF SOIL MACHINE DYNAMICS LTD. AND ALL INFORMATION MUST BE HELD IN THE STRICTEST CONFIDENCE.</p>													
<p>SMD Soil Machine Dynamics Ltd</p>													
										DO NOT SCALE IF IN DOUBT ASK	DRAWING No	REV No.	SIZE
											AD3320	4	A2
SHEET 1 OF 1													