

NOTES :-
 1. ASSEMBLE IN ACCORDANCE WITH SMD SPECIFICATION W100

PARTS LIST			
ITEM	PART No	DESCRIPTION	QTY
1	AA7773	HYD MOTOR 32CC LIGHT WEIGHT	1
2	AB0882	BLEED SCREW M6	1
3	AB4091	PEDESTAL STE 300	1
4	OB_1516	BOLT M6 x 10 SKT BTN HD SS A4-80	2
5	OF_2009	PLUG 1/8" BSPP PLASTIC	1
6	ON_1015	NNUT M20 x 1.5 x 15L NYLOC SS A4-80	1
7	OR_1211	O RING BS009 (5.28 x 1.78)	4
8	OV_1110	THREAD INSERT 230/300/380	8
9	OV_3006-2	SHAFT SEAL RING HT 300/380	1
10	OV_3007	PROPELLOR CAP	1
11	OV_3008	SEAL RETAINER	1
12	OV_3015	BEARING COMBINED NBX4032	1
13	OV_3016	NEEDLE BEARING HT 300/380	1
14	OV_3017	BEARING INNER RING HT300/380 SS	2
15	OV_3019	CURVETECH THRUSTER KEY 6mm SS	1
16	OV_3024	O RING HT 300/380 NITRILE	1
17	OV_3036	LIP SEAL HT 300/380	1
18	OV_3037	PTFE SEAL HT 300/380	1
19	OV_3115	INNER BEARING HT 300/380-23/32REX	1
20	OV_3116	BEARING COMBINED NBX5035Z	1
21	OV_3135	THRUSTER NOZZLE HTE 300 YELLOW	1
22	OV_3139	SHAFT HTE 380	1
23	OV_3140	SLEEVE THRUST BEARING RETAINER	1
24	OV_3141	LOCKING COLLAR HTE THRUSTER BEARING	1
25	OV_3144	PROPELLOR HTE300	1
26	PA4794	BOLT M6 x 40 SHCS SS A2-70	4
27	PA4860	WASHER M12 FLAT BS4320 FORM B SS A2	4
28	PA4884	WASHER M20 FLAT BS4320 FORM B SS A2	1
29	PB9185	BOLT M12 x 30 SHCS SS A4-80	4
30	PC0228	BOLT M5 x 20 SHCS SS A2-70	4
31	PC8485	BOLT M6 x 16 SKT BTN HD SS A2-70	1
32	PC9412	BOLT M5 x 30 SHCS SS A2-70	1
33	PK0219	SEAL O-RING 80.6 x 2.62	1

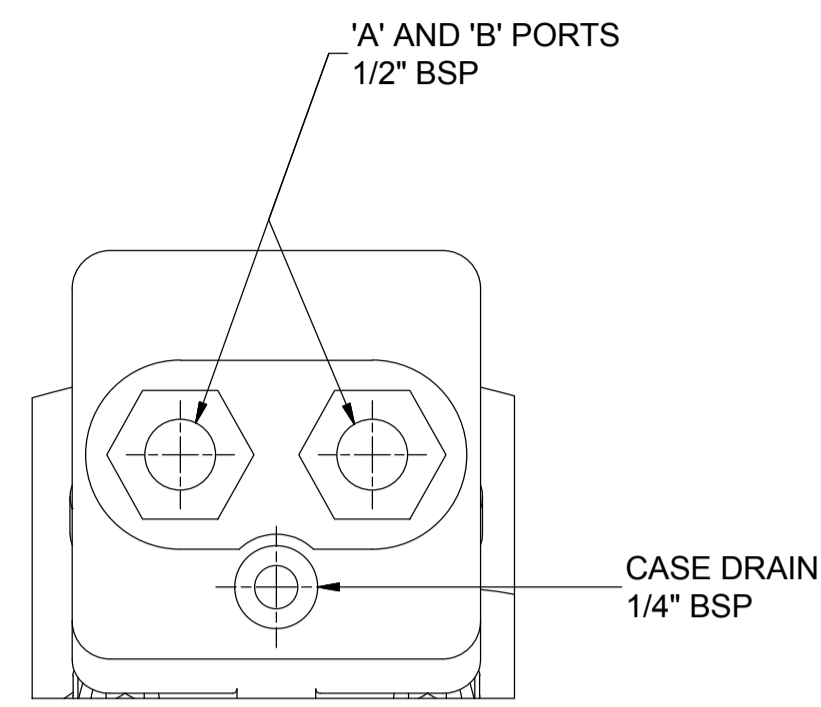
REV	DATE	CHANGE COMMENT	ZONE	DRAWN	CHECKED	APPD	DATE	EST. MASS	DIMENSIONS	SCALE	PROJECTION 3RD	TITLE
1	06/01/10	ITEM 28 WAS OV_1018 REPLACED AND SPRING WASHERS REMOVED	-	POT	POT	JPG	06.07.08	21 kg	mm	1:2		ASSEMBLY THRUSTER CURVETECH 300mm, 32cc BA MOTOR
2	16/04/10	INSERTS SECURED WITH ARALDITE	A7	DH	PTC	POT						
3	01/09/11	ITEM REMOVED FROM LIST AS NO LONGER IN SAEL KIT	-	DH	JPG	JPG						
4	23/05/14	RE-DRAWN TO 3D - PARTS LIST UPDATED, SHT 2 ADDED	-	LO	JCUR	JPG						
5	10/07/2014	UP-REV TO AMEND VAULT ERROR - NO CHANGE TO DRAWING	-	KD	KD	JPG						
6	10-AUG-15	LOCTITE NOTE ADDED TO PA4794	C4	TOB	JCUR	NRC	09.07.08					

DESIGNED	DRAWN	TOLERANCES UNLESS OTHERWISE STATED	MATERIAL:-	DO NOT SCALE	DRAWING No	REV No.	SIZE
JAR	LO	FABRICATION ±1.0 ±1.5 ±2.0 ±3.0 MACHINED PART ±0.15 ±0.4 ±0.8 ±1.0	N/A	IF IN DOUBT ASK	HTE_300BA-32MK2	6	A1

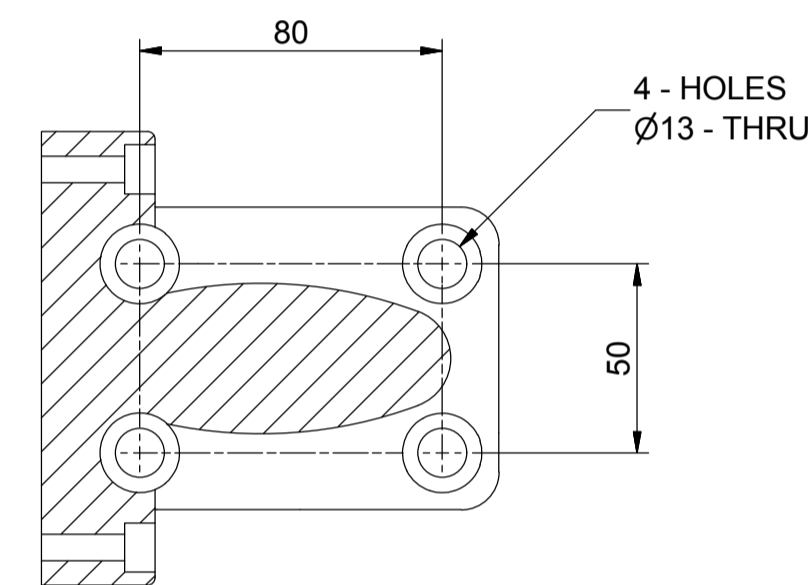
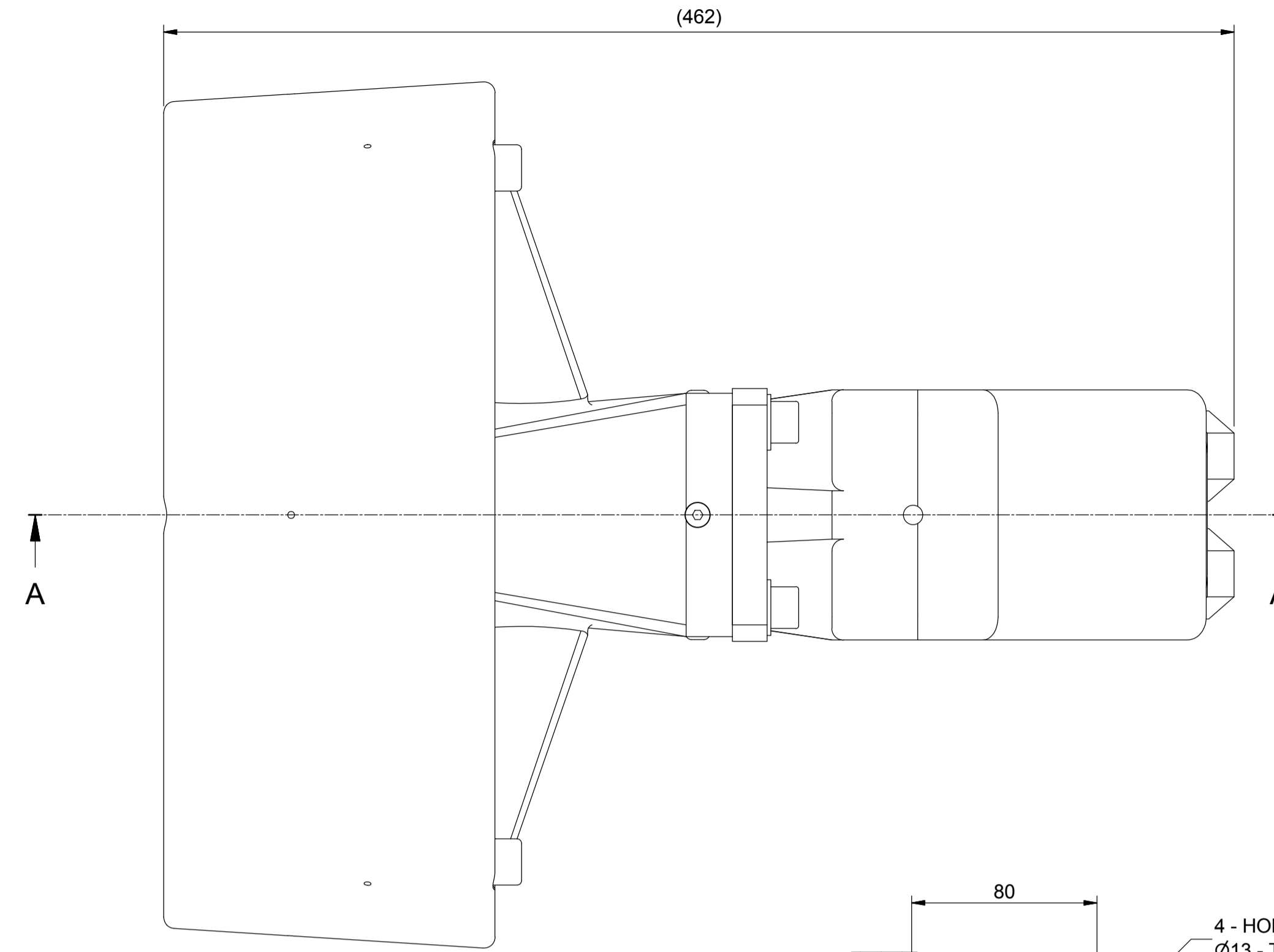
ALL INTELLECTUAL PROPERTY RIGHTS SUBSISTING IN THESE DESIGNS ARE THE PROPERTY OF SOIL MACHINE DYNAMICS LTD. NO COPY IS TO BE MADE WITHOUT THE WRITTEN PERMISSION OF SOIL MACHINE DYNAMICS LTD. ANY PATENT APPLICATIONS, PATENTS AND / OR DESIGN APPLICATIONS, REGISTERED DESIGNS, DESIGN RIGHTS OR COPYRIGHT ARISING FROM OR CONTAINED IN THE DESIGNS ARE THE PROPERTY OF SOIL MACHINE DYNAMICS LTD. AND ALL INFORMATION MUST BE HELD IN THE STRICTEST CONFIDENCE

SMD Soil Machine Dynamics Ltd

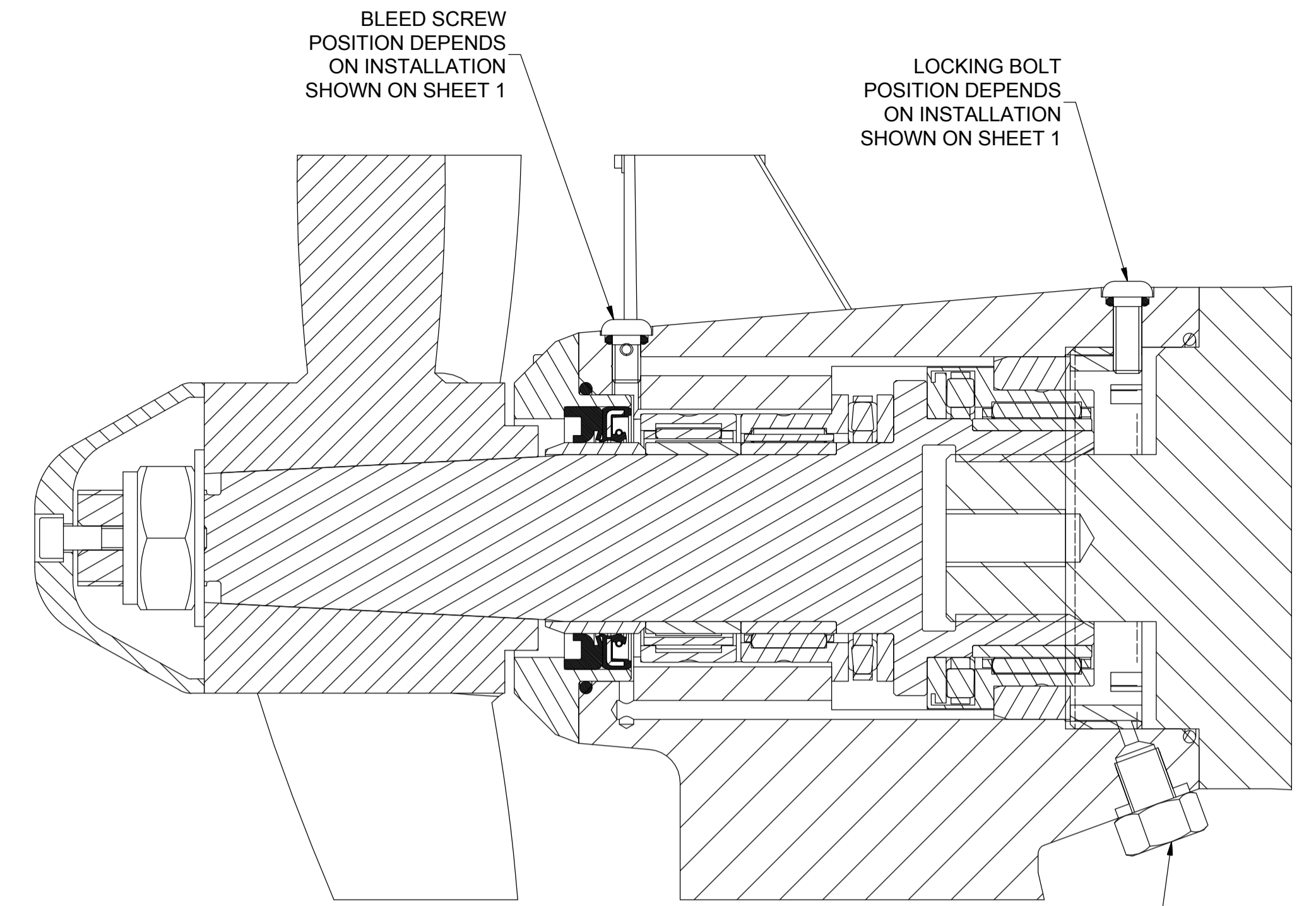
SHEET 1 OF 2



VIEW ON ARROW 'B'
(SCALE 1 : 2)

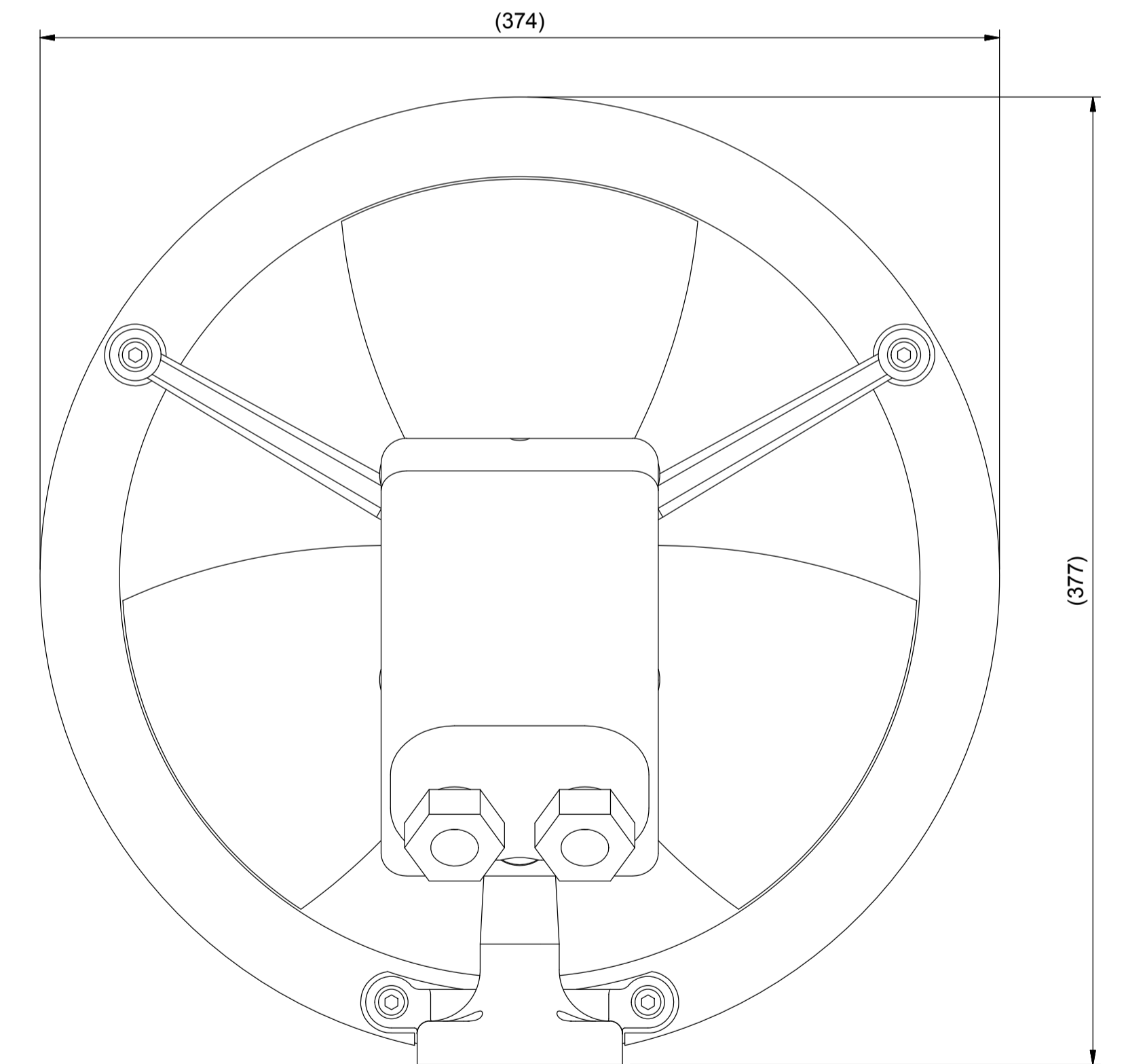
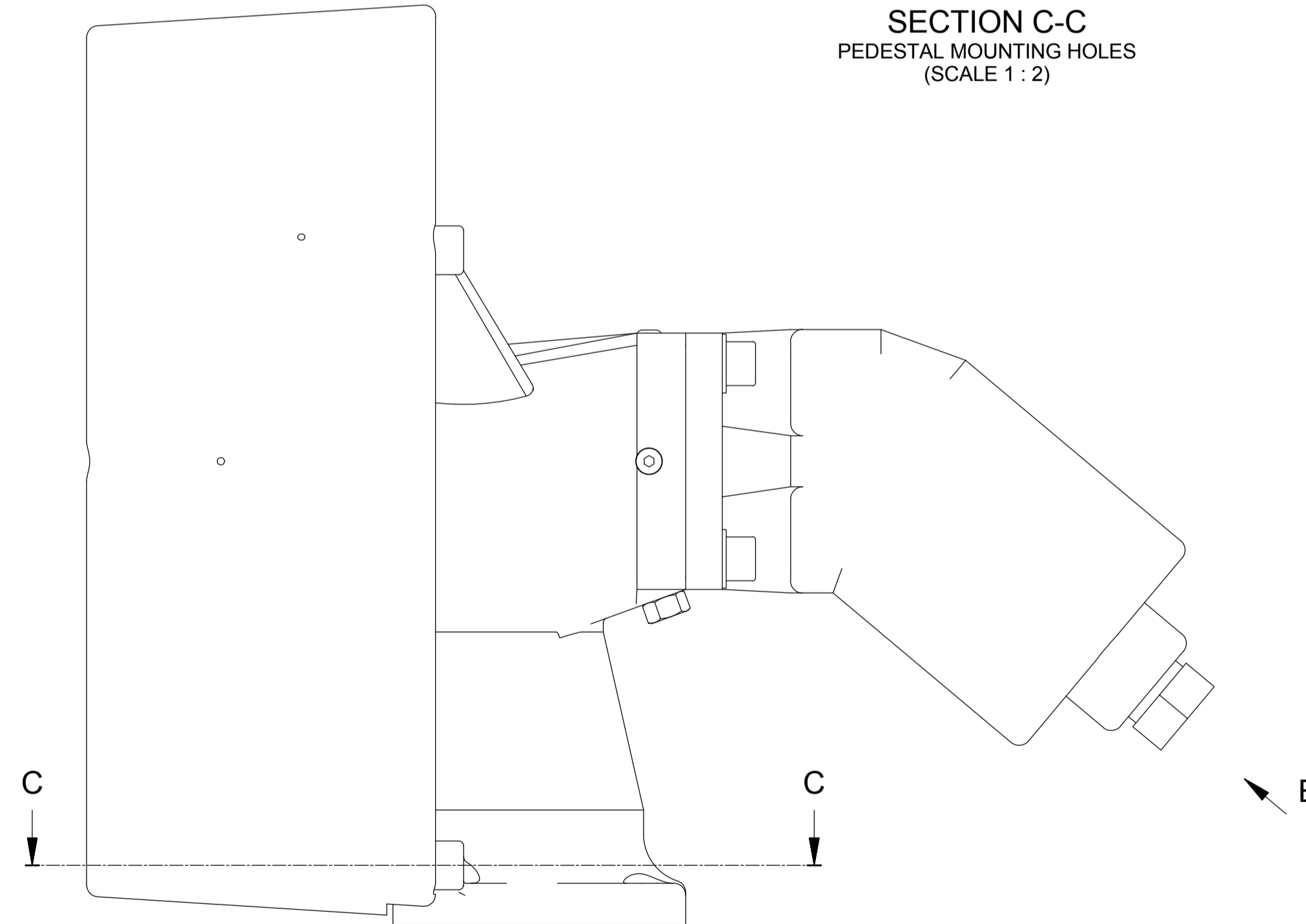
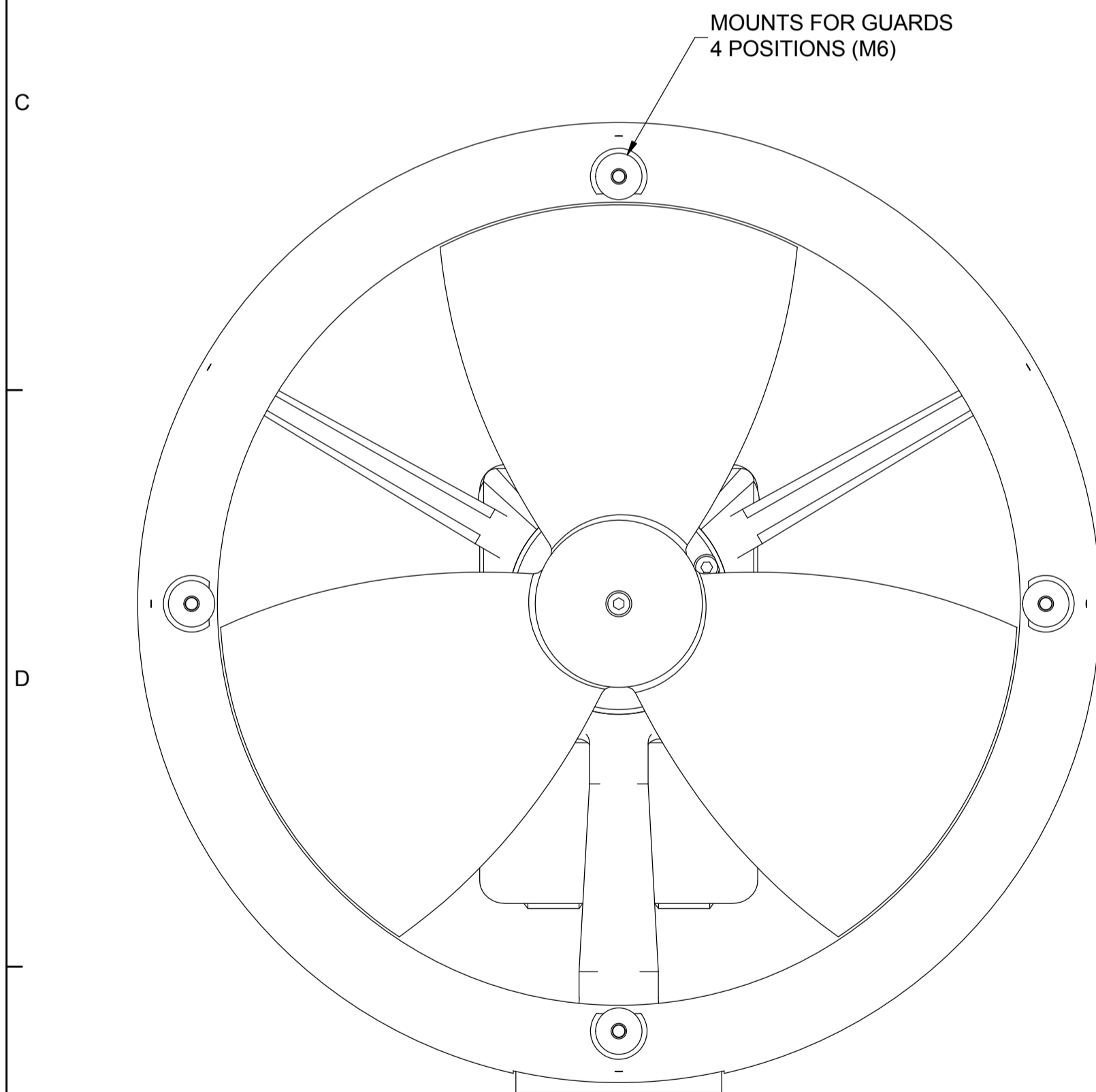


SECTION C-C
PEDESTAL MOUNTING HOLES
(SCALE 1 : 2)



PART SECTION A-A
DETAILING SHAFT BEARING ARRANGEMENT
(SCALE 1 : 1)

COMPENSATOR CONNECTION
1/8" BSP



NOTES

- CASE DRAIN - SHOULD BE 0 - 3 BAR - SIZE FITTINGS ACCORDINGLY.
- COMPENSATOR - PRESSURE SHOULD BE 0 - 1 BAR.
BEARING HOUSING MUST BE COMPENSATED WITH HYDRAULIC OIL.
BLEED POINT SHOULD BE POSITIONED AT HIGHEST POINT.
- A & B PORTS - MAX PRESSURE 300 BAR.
- ASSEMBLE TO SMD WORK INSTRUCTION DOCUMENT W100.

REV	DATE	CHANGE COMMENT	ZONE	DRAWN	CHECKED	APPD	DATE	EST. MASS	DIMENSIONS	SCALE	PROJECTION 3RD	TITLE	
4	23/05/14	RE-DRAWN TO 3D - PARTS LIST UPDATED, SHT 2 ADDED	-	LO	JCUR	JPG	08.07.08	21 kg	mm	1:5		ASSEMBLY THRUSTER CURVETECH 300mm, 32cc BA MOTOR	
5	10/07/2014	UP-REV TO AMEND VAULT ERROR - NO CHANGE TO DRAWING	-	KD	KD	JPG							
6	10-AUG-15	SEE SHEET 1	-	TOB	JCUR	NRC							
							DESIGNED	DRAWN	TOLERANCES UNLESS OTHERWISE STATED			MATERIAL:- N/A	
							JAR	DS	DIMENSIONS mm	UP TO 100	100 TO 300	300 TO 1000	OVER 1000
							CHECKED	APPROVED	FABRICATION	± 1.0	± 1.5	± 2.0	± 3.0
							RJG	RJG	MACHINED PART	± 0.15	± 0.4	± 0.8	± 1.0
<small>ALL INTELLECTUAL PROPERTY RIGHTS SUBSISTING IN THESE DESIGNS ARE THE PROPERTY OF SOIL MACHINE DYNAMICS LTD. NO COPY IS TO BE MADE WITHOUT THE WRITTEN PERMISSION OF SOIL MACHINE DYNAMICS LTD. ANY PATENT APPLICATIONS, PATENTS AND / OR DESIGN APPLICATIONS, REGISTERED DESIGNS, DESIGN RIGHTS OR COPYRIGHT ARISING FROM OR CONTAINED IN THE DESIGNS ARE THE PROPERTY OF SOIL MACHINE DYNAMICS LTD. AND ALL INFORMATION MUST BE HELD IN THE STRICTEST CONFIDENCE</small>													
SMD Soil Machine Dynamics Ltd										DRAWING No		REV No.	SIZE
										HTE_300BA-32MK2		6	A1
SHEET 2 OF 2													