

NOTES :-

1. ASSEMBLE IN ACCORDANCE WITH SMD SPECIFICATION W100

PARTS LIST			
ITEM	PART No	DESCRIPTION	QTY
1	AF3195	ASSEMBLY 2 ST. IHCU ELECTRICAL CONNECTOR	1
2	AG4714	ASSEMBLY IHCU 2-STATION	1

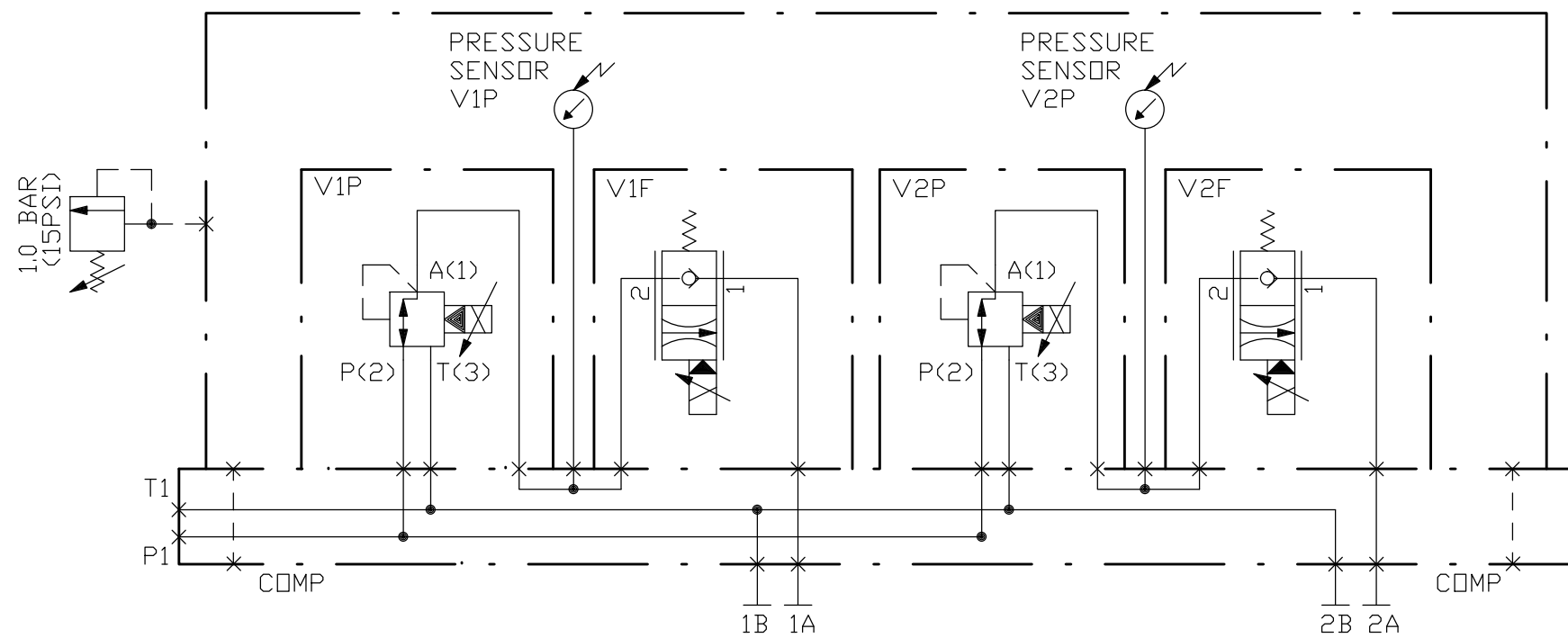
REV	DATE	CHANGE COMMENT	DRAWN	CHECK	APPD	DATE	EST. MASS	DIMENSIONS	SCALE	PROJECTION 3RD	TITLE		
						10 AUG 12	N/A	mm	1:5		ASSEMBLY IHCU 2-STATION - BURTON		
						DESIGNED	DRAWN	TOLERANCES UNLESS OTHERWISE STATED			MATERIAL:- N/A		
						NRC	LO	DIMENSIONS mm	UP TO 100	100 TO 300		300 TO 1000	OVER 1000
						CHECKED	APPROVED	FABRICATION	± 1.0	± 1.5	± 2.0	± 3.0	DO NOT SCALE IF IN DOUBT ASK
						KC	CGB	MACHINED PART	± 0.15	± 0.4	± 0.8	± 1.0	

ALL INTELLECTUAL PROPERTY RIGHTS SUBSISTING IN THESE DESIGNS ARE THE PROPERTY OF SOIL MACHINE DYNAMICS LTD.
 NO COPY IS TO BE MADE WITHOUT THE WRITTEN PERMISSION OF SOIL MACHINE DYNAMICS LTD. ANY PATENT APPLICATIONS,
 PATENTS AND / OR DESIGN APPLICATIONS, REGISTERED DESIGNS, DESIGN RIGHTS OR COPYRIGHT ARISING FROM OR CONTAINED IN THE
 DESIGNS ARE THE PROPERTY OF SOIL MACHINE DYNAMICS LTD. AND ALL INFORMATION MUST BE HELD IN THE STRICTEST CONFIDENCE.



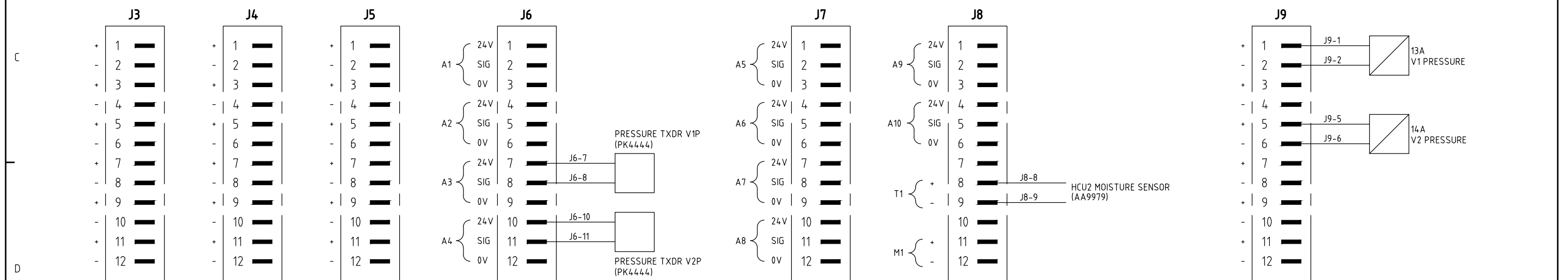
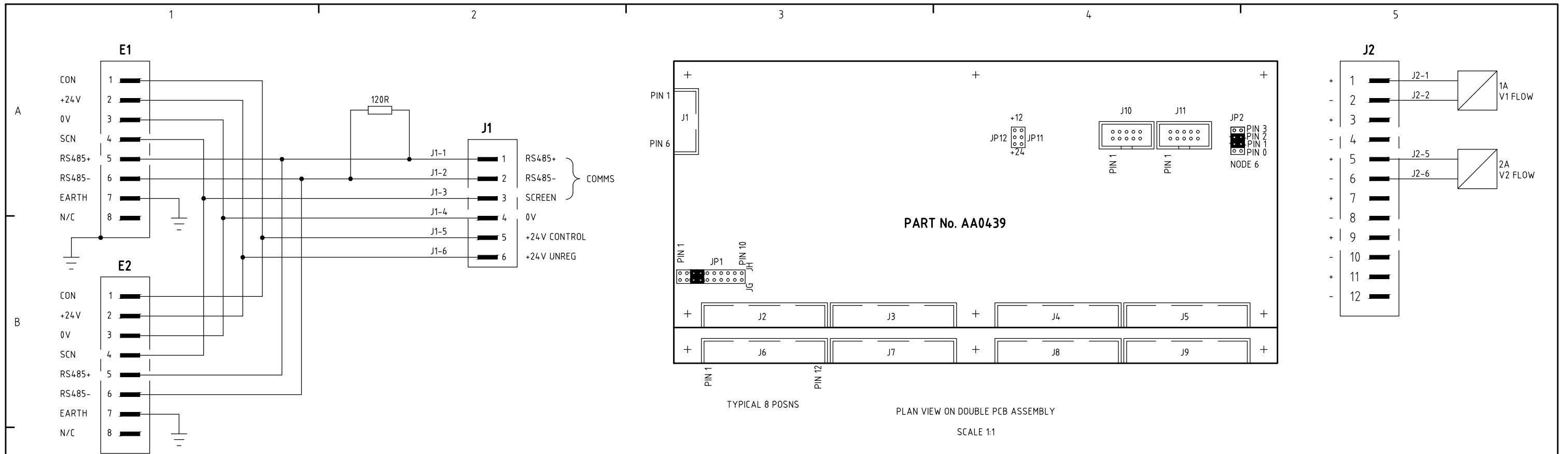
Soil Machine Dynamics Ltd

DRAWING No	REV No.	SIZE
AG4713	0	A4
SHEET 1 OF 3		



PORT SIZES
 1A - 2B SERVICE PORTS 3/4" BSPP
 P1 - PRESSURE PORT 1-1/16" UNF SAE
 T2 - RETURN PORT 1-1/16" UNF SAE
 COMP PORT 1/4" BSPP

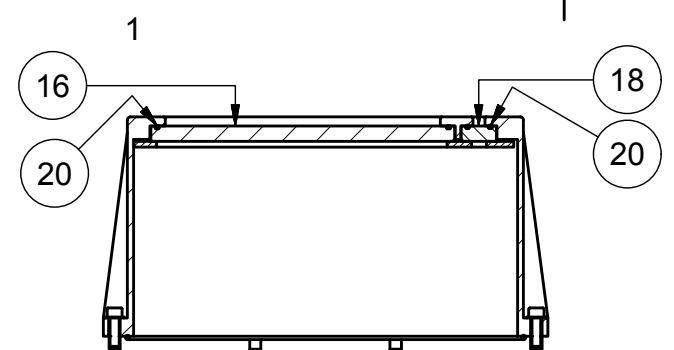
REV No	DATE	CHANGE	ZONE	DRAWN	CHECKED	APPROVED	TITLE						
							ASSEMBLY IHCU 2-STATION - BURTON						
							DESIGNED	DRAWN	CHECKED	APPROVED	DATE	DRAWING NO.	REV No.
							RG	LO	NRC	NRC	10-AUG-12	AG4713	0
							SHEET			2	OF		3
ALL INTELLECTUAL PROPERTY RIGHTS SUBSISTING IN THESE DESIGNS ARE THE PROPERTY OF SOIL MACHINE DYNAMICS LTD. NO COPY IS TO BE MADE WITHOUT THE WRITTEN PERMISSION OF SOIL MACHINE DYNAMICS LTD. ANY PATENT APPLICATIONS, PATENTS AND/OR DESIGN APPLICATIONS, REGISTERED DESIGNS, DESIGN RIGHTS OR COPYRIGHT ARISING FROM OR CONTAINED IN THE DESIGNS ARE THE PROPERTY OF SOIL MACHINE DYNAMICS LTD AND ALL INFORMATION MUST BE HELD IN THE STRICTEST CONFIDENCE							Soil Machine Dynamics Ltd					A3	



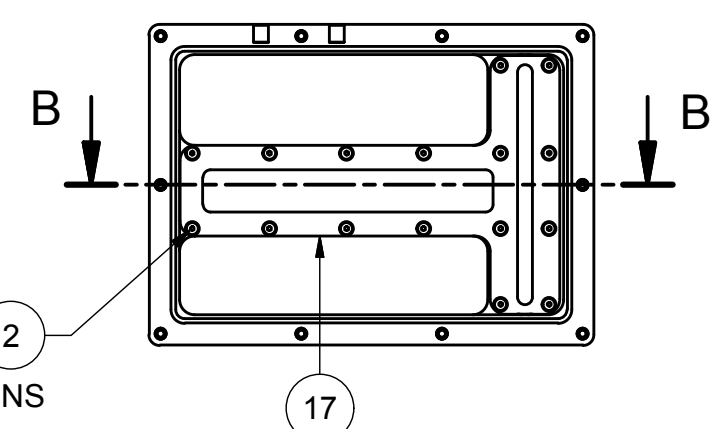
REV No	DATE	CHANGE	ZONE	DRAWN	CHECKED	APPROVED	TITLE						
							ASSEMBLY IHCU 2-STATION - BURTON (ELECTRICAL WIRING)						
							DESIGNED	DRAWN	CHECKED	APPROVED	DATE	DRAWING NO.	REV No.
							P.D.W.	LO	AT	KS	10-AUG-12	AG4713	0
							SHEET 3 OF 3						

ALL INTELLECTUAL PROPERTY RIGHTS SUBSISTING IN THESE DESIGNS ARE THE PROPERTY OF SOIL MACHINE DYNAMICS LTD. NO COPY IS TO BE MADE WITHOUT THE WRITTEN PERMISSION OF SOIL MACHINE DYNAMICS LTD. ANY PATENT APPLICATIONS, PATENTS AND/OR DESIGN APPLICATIONS, REGISTERED DESIGNS, DESIGN RIGHTS OR COPYRIGHT ARISING FROM OR CONTAINED IN THE DESIGNS ARE THE PROPERTY OF SOIL MACHINE DYNAMICS LTD AND ALL INFORMATION MUST BE HELD IN THE STRICTEST CONFIDENCE

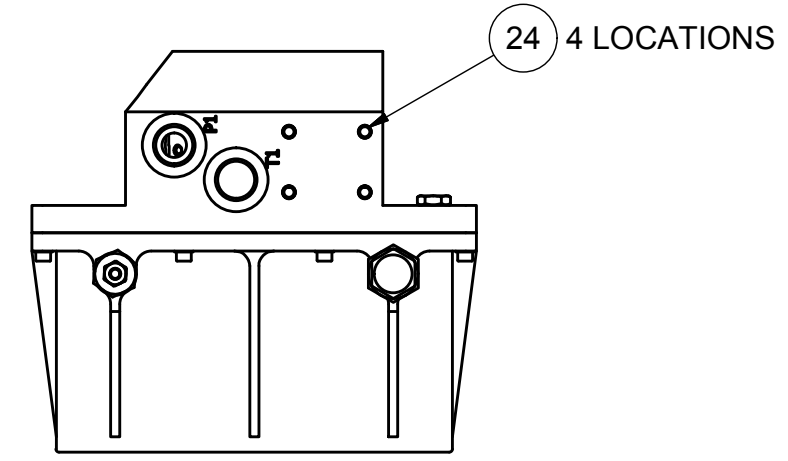




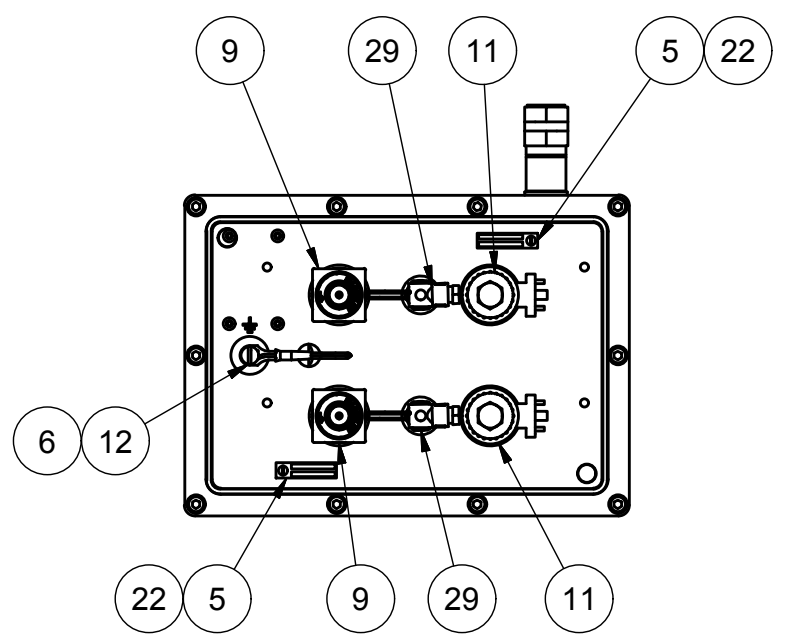
SECTION B-B



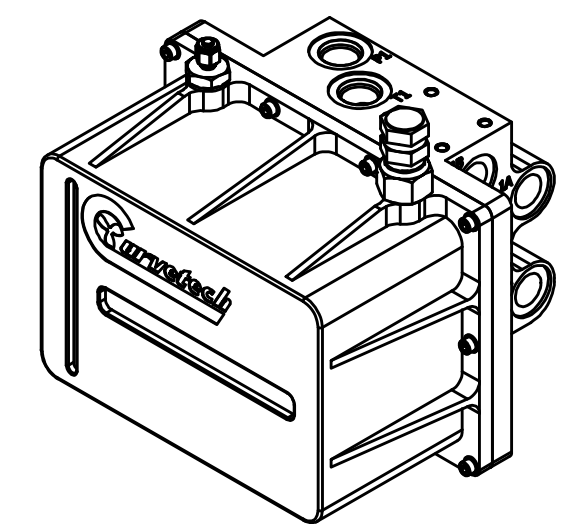
VIEW ON INSIDE OF COVER



24 4 LOCATIONS



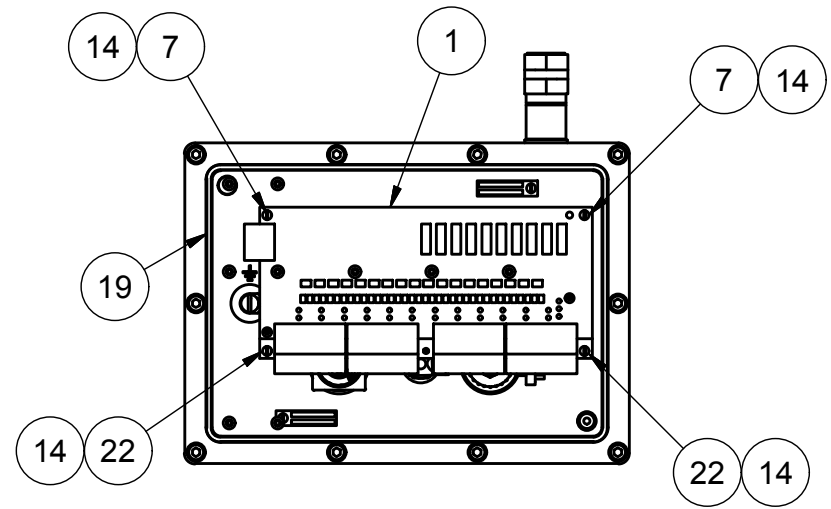
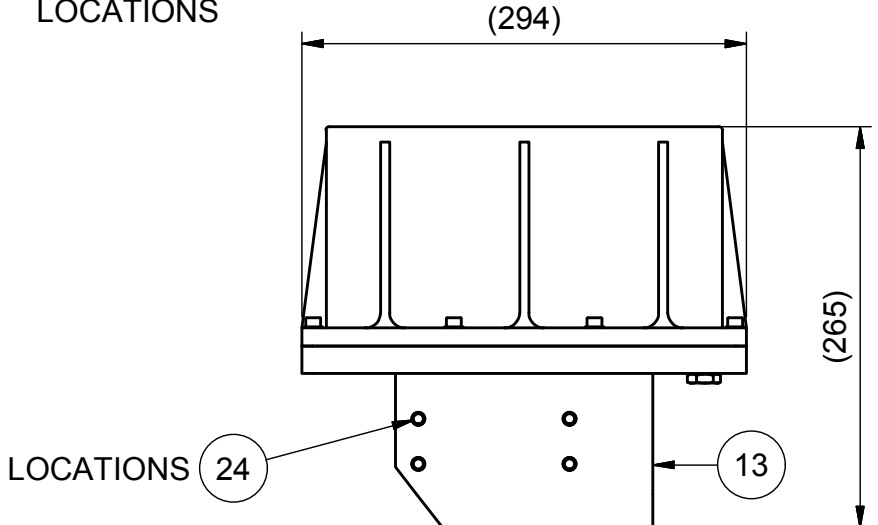
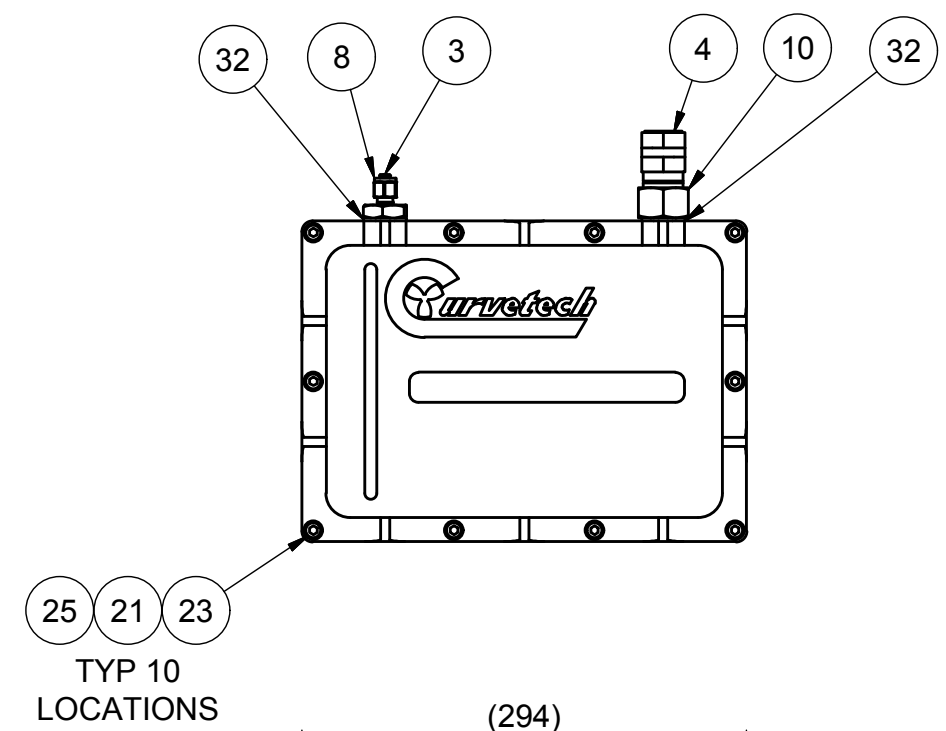
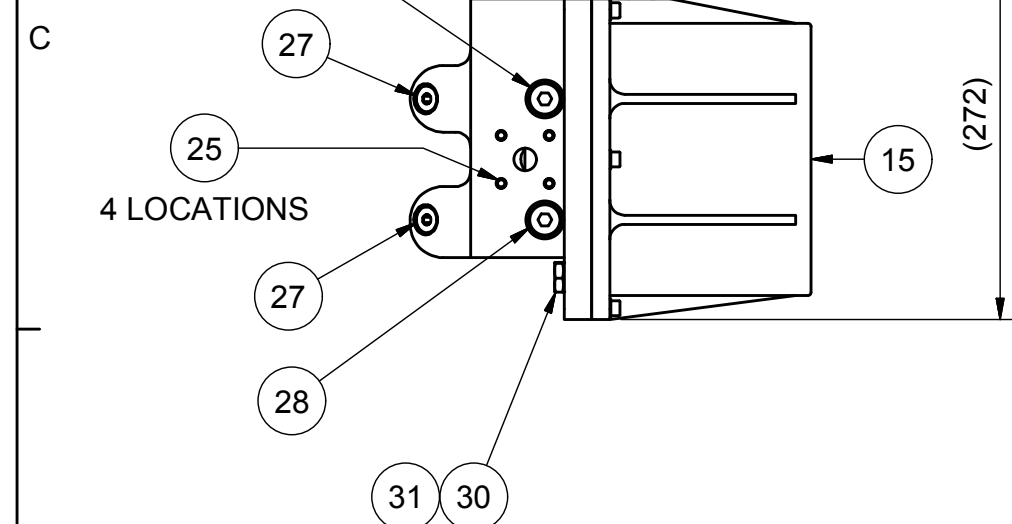
COVER & PCB OMITTED FROM VIEW TO SHOW INTERNALS



ISOMETRIC VIEW

NOTES :-
1. ASSEMBLE IN ACCORDANCE WITH SMD SPECIFICATION W100

PARTS LIST			
ITEM	PART No	DESCRIPTION	QTY
1	AA0439	PCB MULTIFUNCTION VALVE CONTROLLER	1
2	AA2745	BOLT M4 x 12 SKT CSK HD SS A2-70	16
3	AA3195	FITTING PLUG 1/4" SS A4 - SWAGelok SS-400-P	1
4	AA3273	VALVE RELIEF 15psi (3/4"NPT)	1
5	AA9979	PCB WATER INGRESS SENSOR	2
6	AB0941	CABLE ACC RING CRIMP RED M6	1
7	AB1968	BOLT M3 x 20 SLTD PAN HD SS A2-70	2
8	AC0834	CONNECTOR MALE 1/2"BSP - 1/4" TUBE	1
9	AC5649	VALVE PROP. PRESS. REDUCING	2
10	AC6647	ADAPTOR 1/2" BSPP M - 3/4" NPT F	1
11	AC9011	VALVE PROPORTIONAL FLOW CONTROL	2
12	AE1504	BOLT M6 x 8 SLTD PAN HD SS A2-70	1
13	AF1736	MANIFOLD 2-STATION HIGH-FLOW HCU	1
14	AF1771	STAND HCU PCB	4
15	AG4715	COVER VALVE PACK 2 STATION HCU	1
16	AG4716	PLATE COVER SIGHT GLASS	1
17	AG4717	PLATE RETAINING RING	1
18	AG8170	PLATE COVER SIGHT GLASS	1
19	OR_1040	O RING CORD 3mm	1
20	OR_1041	O RING CORD 2mm	2
21	PA0546	WASHER M6 FLAT BS4320 FORM B SS A2	10
22	PA5996	BOLT M3 x 6 SLTD PAN HD SS A2-70	4
23	PB9266	BOLT M6 x 20 SHCS SS A2-70	10
24	PD5642	INSERT HELICOIL M8 x 1.5D SS	8
25	PD5645	INSERT HELICOIL M6 x 1.5D SS	14
26	PD5953	HELICOIL INSERT M4x 1.5D SS	16
27	PJ8945	FITTING PLUG 1/4"BSP VSR SS	2
28	PJ8946	FITTING PLUG 3/8"BSP VSR SS	2
29	PK4444	PRESSURE SENSOR 0-400 bar 4-20mA	2
30	WA1073	FITTING PLUG 1/4" BSP HEX SS	1
31	WA1077	SEAL BONDED SS 1/4" BSP	1
32	WA1079	SEAL BONDED 1/2"BSP SS-1.4436 (316S33)	2



COVER OMITTED FROM VIEW TO SHOW PCB & FASTENERS

REV	DATE	CHANGE COMMENT	ZONE	DRAWN	CHECKED	APPD	DATE	EST. MASS	DIMENSIONS	SCALE	PROJECTION 3RD	TITLE		
							18 JAN 13	14.5 kg	mm	1:5		ASSEMBLY iHCU 2-STATION		
							DESIGNED NRC	DRAWN LO	TOLERANCES UNLESS OTHERWISE STATED					
							CHECKED KC	APPROVED NRC	DIMENSIONS mm	UP TO 100	100 TO 300	300 TO 1000	OVER 1000	MATERIAL:- N/A
									FABRICATION	± 1.0	± 1.5	± 2.0	± 3.0	DO NOT SCALE IF IN DOUBT ASK
									MACHINED PART	± 0.15	± 0.4	± 0.8	± 1.0	DRAWING No
														REV No.
														SIZE
														AG4714
														0
														A2

ALL INTELLECTUAL PROPERTY RIGHTS SUBSISTING IN THESE DESIGNS ARE THE PROPERTY OF SOIL MACHINE DYNAMICS LTD. NO COPY IS TO BE MADE WITHOUT THE WRITTEN PERMISSION OF SOIL MACHINE DYNAMICS LTD. ANY PATENT APPLICATIONS, PATENTS AND / OR DESIGN APPLICATIONS, REGISTERED DESIGNS, DESIGN RIGHTS OR COPYRIGHT ARISING FROM OR CONTAINED IN THE DESIGNS ARE THE PROPERTY OF SOIL MACHINE DYNAMICS LTD. AND ALL INFORMATION MUST BE HELD IN THE STRICTEST CONFIDENCE.

