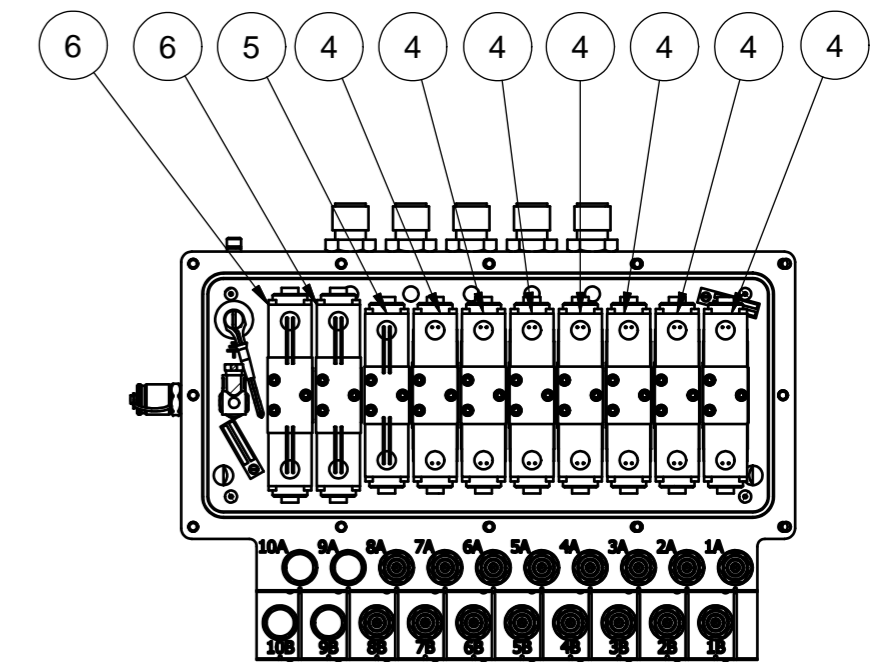
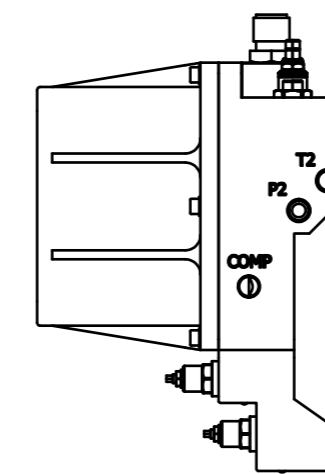
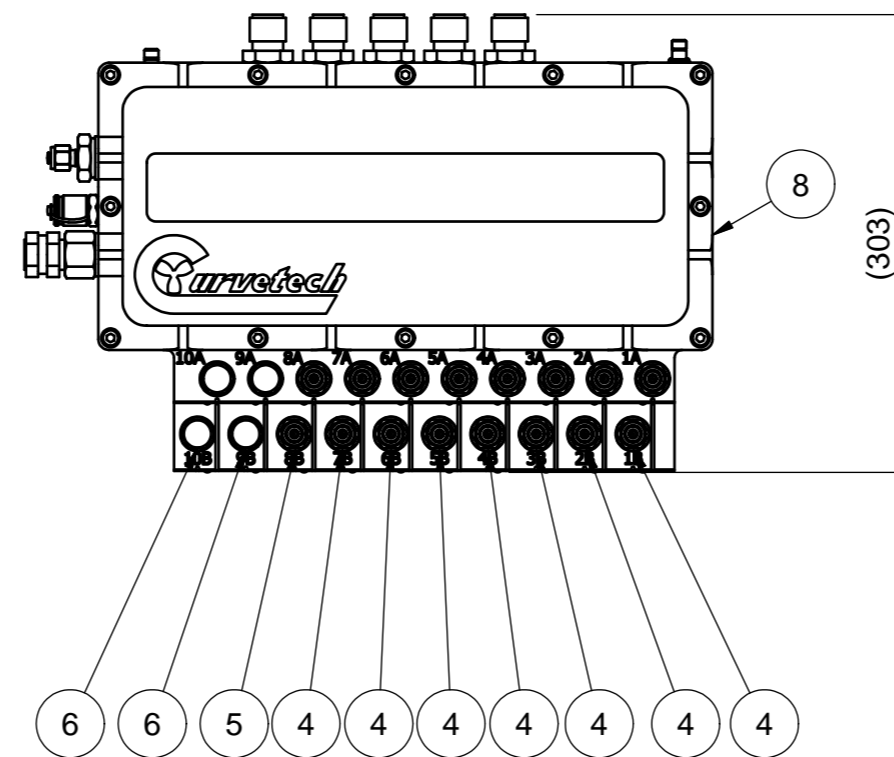
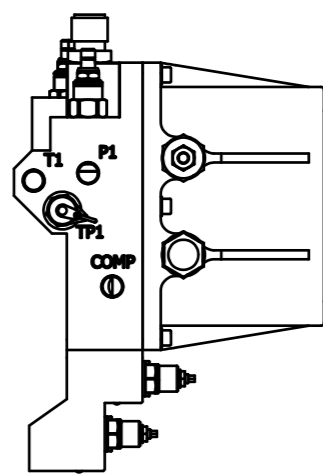
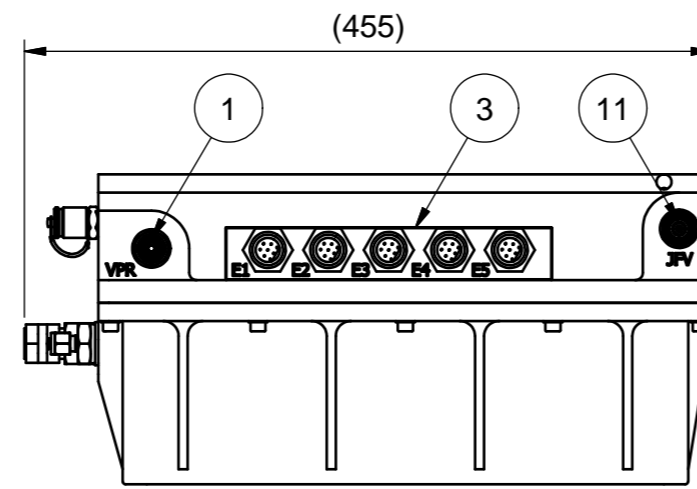


NOTES :-

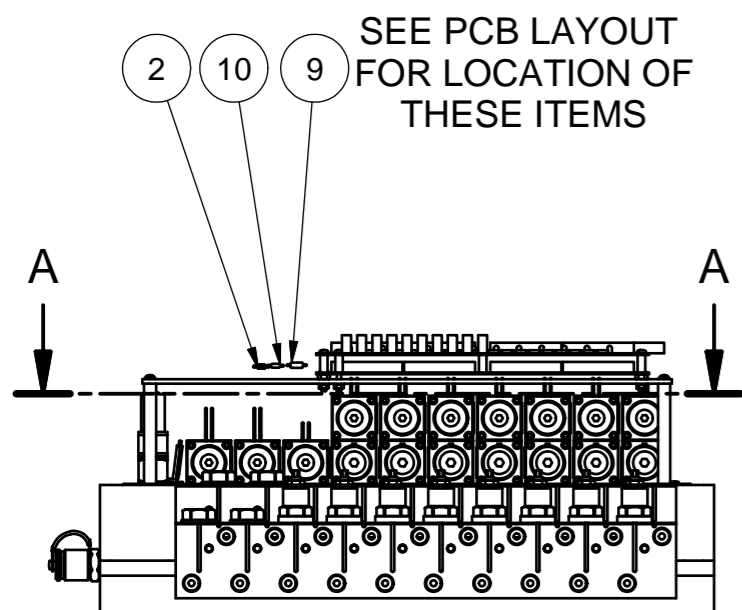
1. ASSEMBLE IN ACCORDANCE WITH SMD SPECIFICATION W100.
2. ALL OPEN PORTS SHOULD BE CAPPED WITH PLASTIC DUST CAPS AFTER BUILD OF HCU.
3. TORQUE ALL WANDFLUH CARTRIDGE VALVES TO 30 Nm.
4. VSR PLUGS - APPLY LOCTITE 542 TO THREADS PRIOR TO ASSEMBLY.
5. IF IN DOUBT PLEASE ASK

PARTS LIST				
ITEM	PART No	DESCRIPTION	QTY	COMMENTS
1	AD2284	VALVE PBDB-LWN/AP REDUCING SS	1	
2	AE6690	RESISTOR CARBON 120R 0.4WATT	1	
3	AE7035	ASSEMBLY HCU ELEC. MANIFOLD - BURTON	1	
4	AF1068	ASSEMBLY MINI 3 DIR+PO+FLOW / DOF	7	
5	AF1069	ASSEMBLY MINI 3 DIR+FLOW / DF	1	
6	AF1072	ASSEMBLY MINI 3 PROP / P	2	
7	AG2291	DRAWING ELECTRICAL WIRING 10&12 WAY HCU BURTON	1	NOT SHOWN
8	AG4677	ASSEMBLY 10-STATION iHCU MANIFOLD AND COVER ASSEMBLY	1	
9	PB7876	RESISTOR 4K7	1	
10	PB7878	RESISTOR 10K	1	
11	PG6053	VALVE DIRECTIONAL SUN DPBA-LAN/V	1	

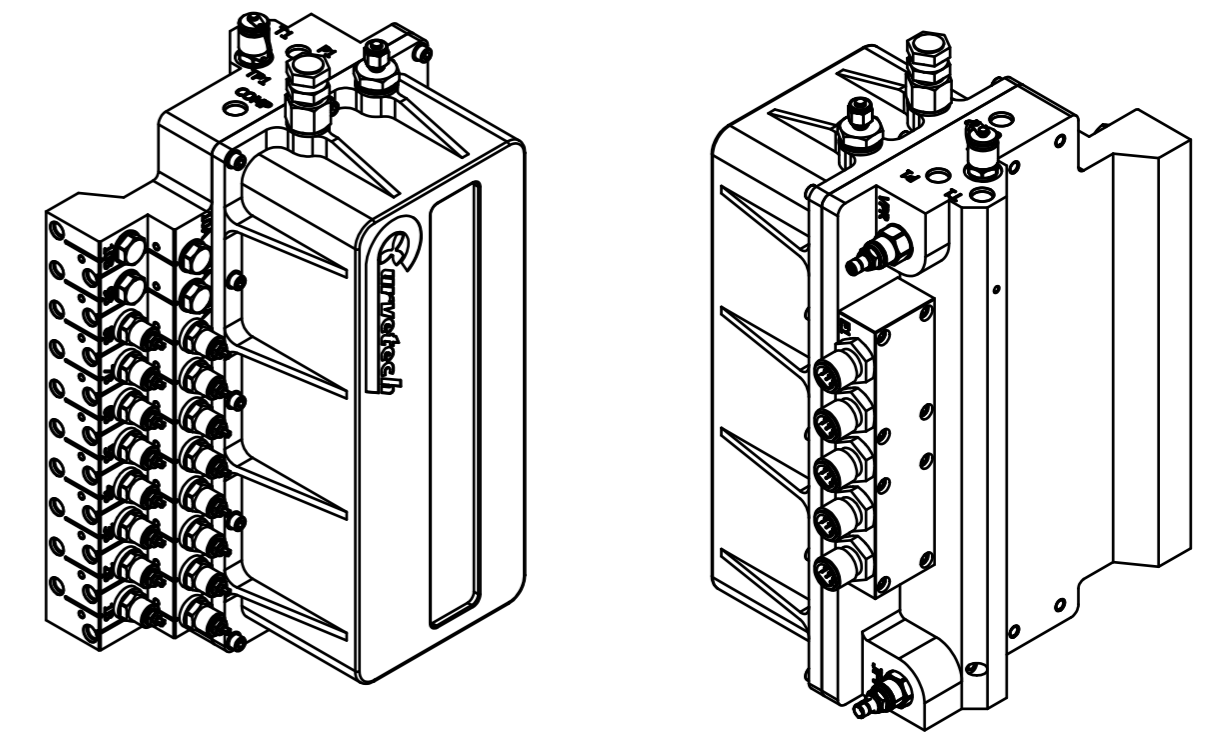
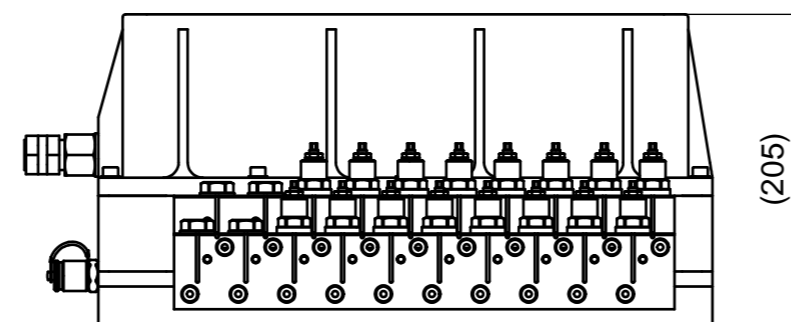


SECTION A-A  
VIEW SHOWING VALVE STACKS

SEE PCB LAYOUT FOR LOCATION OF THESE ITEMS

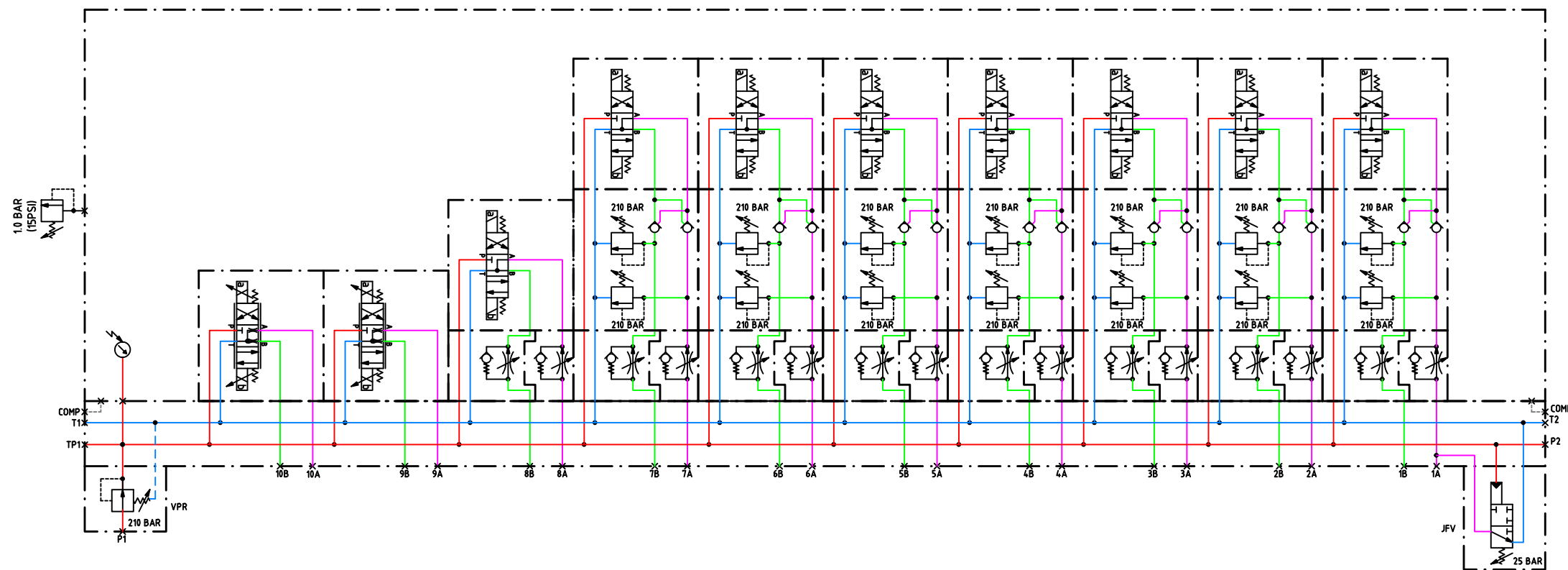


VIEW SHOWING VALVE STACKS



ISOMETRIC VIEW  
SCALE: 1 : 5

REV	DATE	CHANGE COMMENT	ZONE	DRAWN	CHECKED	APPD	DATE	EST. MASS	DIMENSIONS	SCALE	PROJECTION 3RD	TITLE				
1	25 NOV 13	DRAWING INITIAL RELEASE AT REV 1	N/A	PIB	JPG	JPG	09/AUG/12	N/A	mm	1:5		ASSEMBLY iHCU 10-STATION - BURTON				
2	23 JAN 14	SHEET 2 ADDED.	-	LO	NRC	NRC										
							DESIGNED	DRAWN	TOLERANCES UNLESS OTHERWISE STATED			MATERIAL:- N/A				
							POT	LO	DIMENSIONS mm	UP TO 100	100 TO 300		300 TO 1000	OVER 1000		
							CHECKED	APPROVED	FABRICATION	± 1.0	± 1.5	± 2.0	± 3.0	DO NOT SCALE IF IN DOUBT ASK		
							TOB	JPG	MACHINED PART	± 0.15	± 0.4	± 0.8	± 1.0			
<p>ALL INTELLECTUAL PROPERTY RIGHTS SUBSISTING IN THESE DESIGNS ARE THE PROPERTY OF SOIL MACHINE DYNAMICS LTD. NO COPY IS TO BE MADE WITHOUT THE WRITTEN PERMISSION OF SOIL MACHINE DYNAMICS LTD. ANY PATENT APPLICATIONS, PATENTS AND / OR DESIGN APPLICATIONS, REGISTERED DESIGNS, DESIGN RIGHTS OR COPYRIGHT ARISING FROM OR CONTAINED IN THE DESIGNS ARE THE PROPERTY OF SOIL MACHINE DYNAMICS LTD. AND ALL INFORMATION MUST BE HELD IN THE STRICTEST CONFIDENCE.</p>												<b>Soil Machine Dynamics Ltd</b>		DRAWING No <b>AG4676</b>	REV No. <b>2</b>	SIZE <b>A2</b>
												SHEET 1 OF 2				



PORTS A1 - A10 7/16"UNF  
 PORTS B1 - B10 7/16"UNF  
 PORTS T1 & T2 9/16"UNF  
 PORTS P1 & P2 9/16"UNF  
 TP1 1/4"BSPP  
 COMP 9/16"UNF

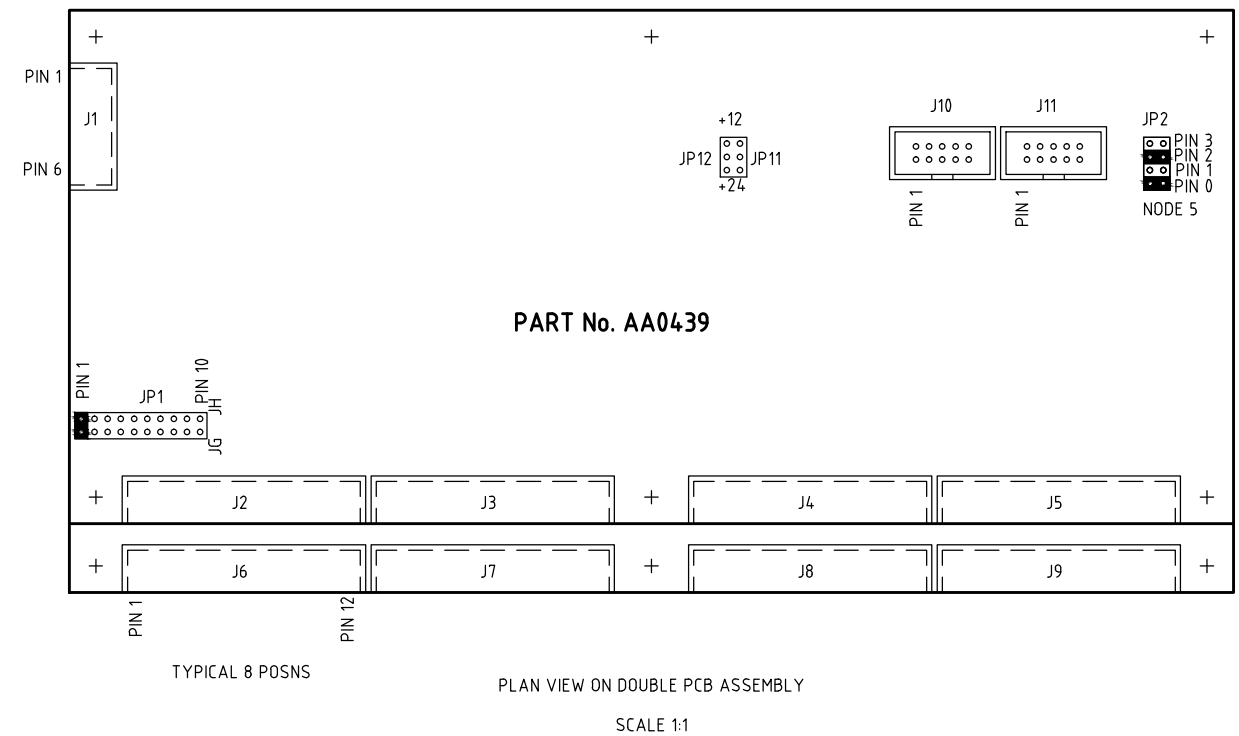
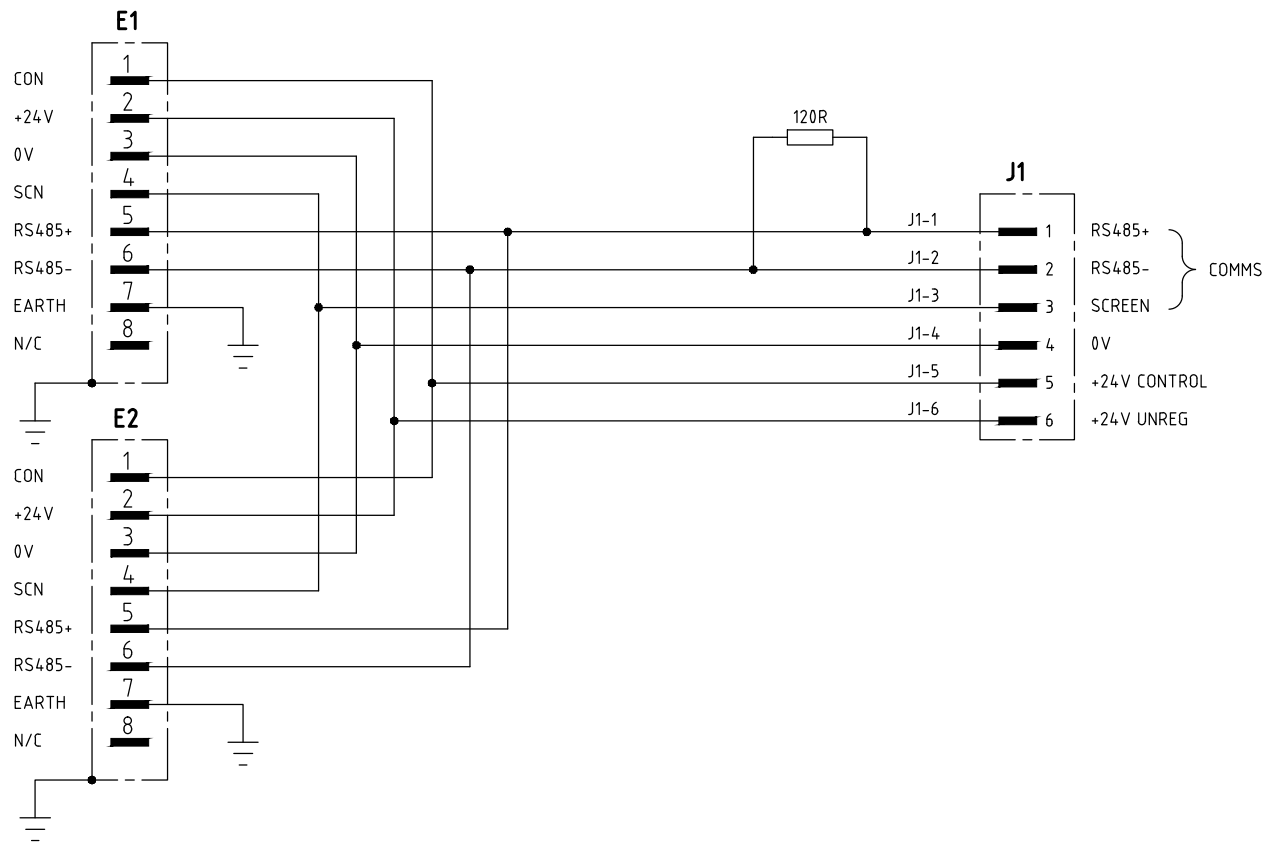
RELEASED FOR MANUFACTURE

REV No	DATE	CHANGE	DRAWN	CHECK	APPD	DATE	EST. MASS	DIMENSIONS	SCALE	PROJECTION 3RD	TITLE	DRAWING NO.	REV NO.	SIZE	
1	25 NOV 13	DRAWING INITIAL RELEASE AT REV 1	LO	NRC	NRC	23 JAN 14	NA	mm	NTS		ASSEMBLY iHCU 10-STATION - BURTON (HYDRAULIC)	AG4676	2	A3	
2	23 JAN 14	THIS SHEET ADDED.	LO	NRC	NRC										
						DESIGNED	DRAWN	TOLERANCES UNLESS OTHERWISE STATED				MATERIAL:- NA			
						PDW	PDW	DIMENSION mm	UP TO 100	100 TO 300	300 TO 1000	OVER 1000	DO NOT SCALE		
						CHECKED	APPROVED	FABRICATION	± 1.0	± 1.5	± 2.0	± 3.0	IF IN DOUBT ASK		
						NRC	NRC	MACHINED PART	± 0.15	± 0.4	± 0.8	± 1.0	SHEET 2 OF 2		

ALL INTELLECTUAL PROPERTY RIGHTS SUBSISTING IN THESE DESIGNS ARE THE PROPERTY OF SOIL MACHINE DYNAMICS LTD. NO COPY IS TO BE MADE WITHOUT THE WRITTEN PERMISSION OF SOIL MACHINE DYNAMICS LTD. ANY PATENT APPLICATIONS, PATENTS AND/OR DESIGN APPLICATIONS, REGISTERED DESIGNS, DESIGN RIGHTS OR COPYRIGHT ARISING FROM OR CONTAINED IN THE DESIGNS ARE THE PROPERTY OF SOIL MACHINE DYNAMICS LTD AND ALL INFORMATION MUST BE HELD IN THE STRICTEST CONFIDENCE.



**Soil Machine Dynamics Ltd**



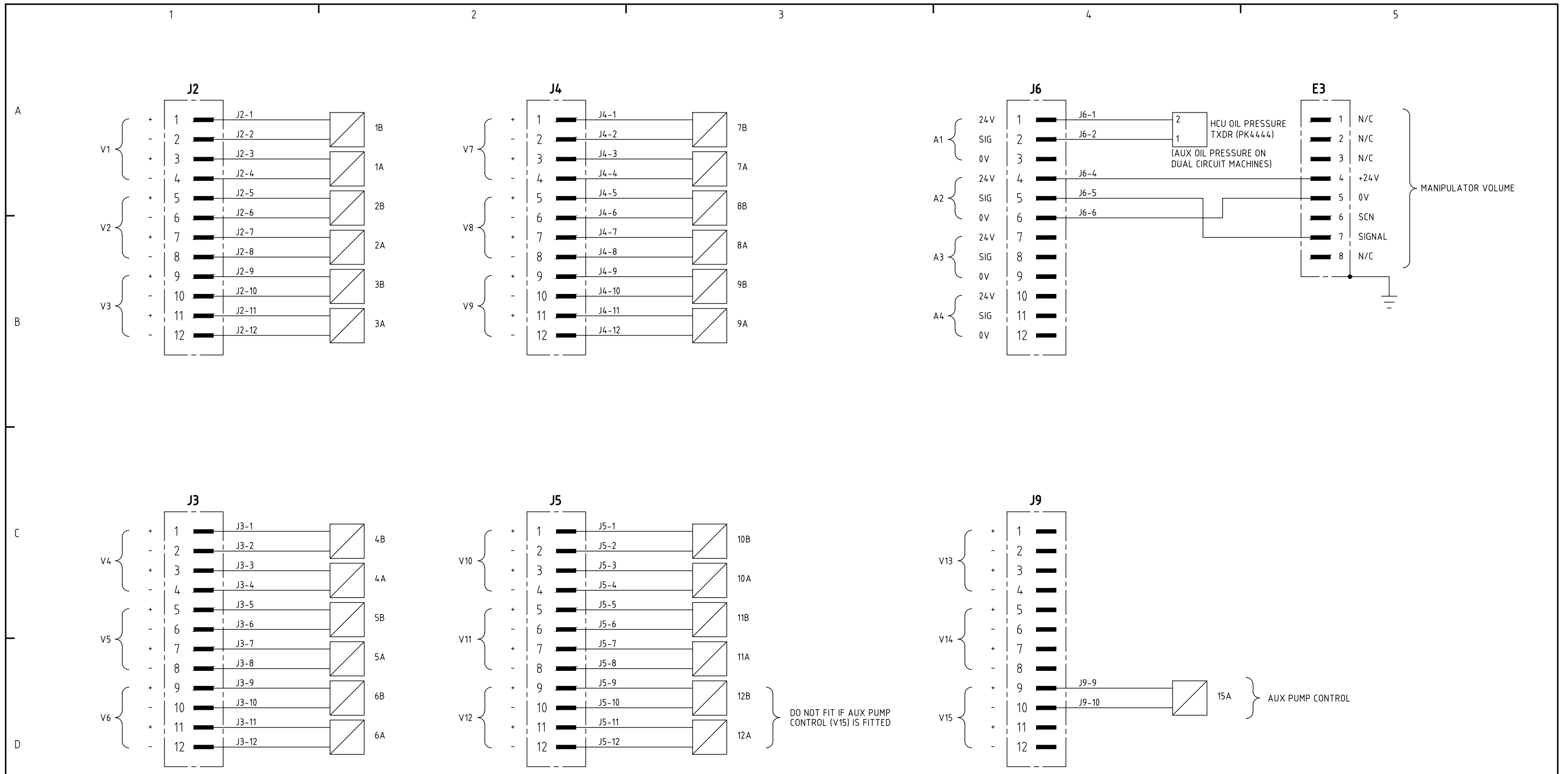
NOTE:  
WANDFLUH VALVES - SOLENOID "A"  
OPENS PORT "B" AND VICE VERSA

# RELEASED FOR MANUFACTURE

REV No	DATE	CHANGE	ZONE	DRAWN	CHECKED	APPROVED	TITLE						
1	29-AUG-12	DRAWING TITLE CHANGED TO BURTON TYPE ONLY	-	AT	MMc	PDW	DRAWING ELECTRICAL WIRING 10&12 WAY HCU BURTON						
2	09-OCT-12	NO CHANGES TO THIS SHEET.	-	MMC	AT	KS							
3	11-DEC-12	NO CHANGES TO THIS SHEET.	-	DH	AT	KS							
4	12-SEPT-13	NO CHANGE TO THIS SHEET	-	AT	KS	PDW	DESIGNED	DRAWN	CHECKED	APPROVED	DATE	DRAWING NO.	REV No.
5	21-JAN-14	NO CHANGE TO THIS SHEET	-	JGC	IMP	IMP	P.D.W.	P.D.W.	A.T.	K.S.	21/08/12	AG2291	6
6	23-JAN-14	NO CHANGE TO THIS SHEET	-	LO	NRC	NRC						SHEET 1 OF 3	

ALL INTELLECTUAL PROPERTY RIGHTS SUBSISTING IN THESE DESIGNS ARE THE PROPERTY OF SOIL MACHINE DYNAMICS LTD. NO COPY IS TO BE MADE WITHOUT THE WRITTEN PERMISSION OF SOIL MACHINE DYNAMICS LTD. ANY PATENT APPLICATIONS, PATENTS AND/OR DESIGN APPLICATIONS, REGISTERED DESIGNS, DESIGN RIGHTS OR COPYRIGHT ARISING FROM OR CONTAINED IN THE DESIGNS ARE THE PROPERTY OF SOIL MACHINE DYNAMICS LTD AND ALL INFORMATION MUST BE HELD IN THE STRICTEST CONFIDENCE

**SMD** Soil Machine Dynamics Ltd **A3**



**RELEASED FOR MANUFACTURE**

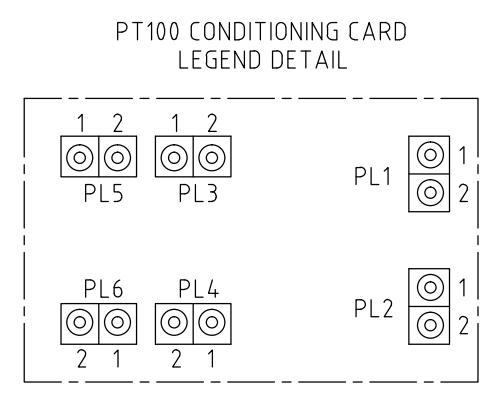
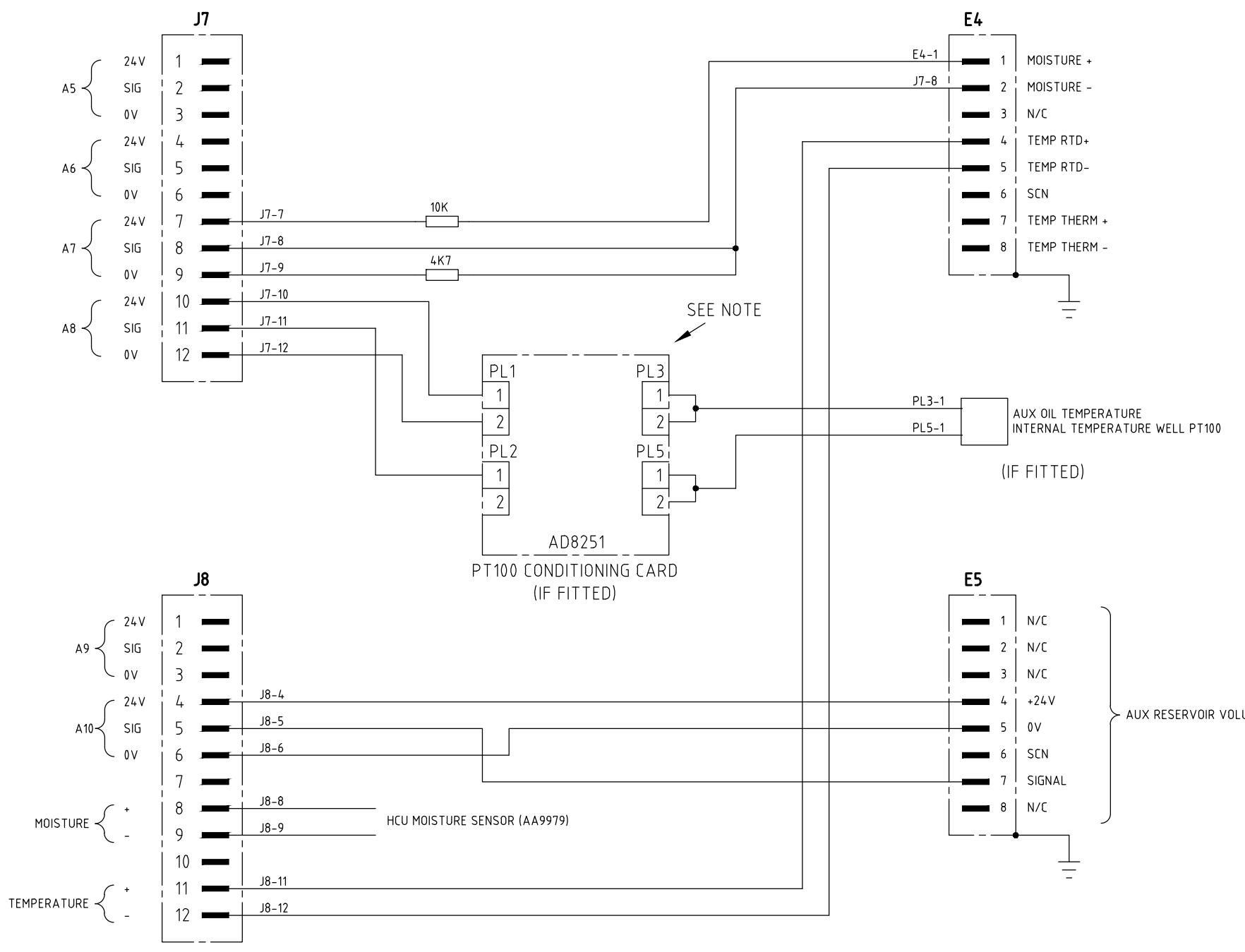
REV No	DATE	CHANGE	ZONE	DRAWN	CHECKED	APPROVED	TITLE						
1	29-AUG-12	DRAWING TITLE CHANGED TO BURTON TYPE ONLY	-	AT	MMc	PDW	DRAWING ELECTRICAL WIRING 10&12 WAY HCU BURTON						
2	09-OCT-12	REVISED REFERENCES.	-	MMC	AT	KS							
3	11-DEC-12	NO CHANGES TO THIS SHEET.	-	DH	AT	KS							
4	12-SEPT-13	NO CHANGE TO THIS SHEET	-	AT	KS	PDW	DESIGNED	DRAWN	CHECKED	APPROVED	DATE	DRAWING NO.	REV No.
5	21-JAN-14	NO CHANGE TO THIS SHEET	-	JGC	IMP	IMP	P.D.W.	P.D.W.	A.T.	K.S.	21/08/12	AG2291	6
6	23-JAN-14	NO CHANGE TO THIS SHEET	-	LO	NRC	NRC						SHEET 2 OF 3	

ALL INTELLECTUAL PROPERTY RIGHTS SUBSISTING IN THESE DESIGNS ARE THE PROPERTY OF SOIL MACHINE DYNAMICS LTD. NO COPY IS TO BE MADE WITHOUT THE WRITTEN PERMISSION OF SOIL MACHINE DYNAMICS LTD. ANY PATENT APPLICATIONS, PATENTS AND/OR DESIGN APPLICATIONS, REGISTERED DESIGNS, DESIGN RIGHTS OR COPYRIGHT ARISING FROM OR CONTAINED IN THE DESIGNS ARE THE PROPERTY OF SOIL MACHINE DYNAMICS LTD AND ALL INFORMATION MUST BE HELD IN THE STRICTEST CONFIDENCE

**Soil Machine Dynamics Ltd**
A3

1 2 3 4 5

A  
B  
C  
D



NOTE: PT100 CARD IS OPTIONAL AND MAY NOT BE FITTED

# RELEASED FOR MANUFACTURE

REV No	DATE	CHANGE	ZONE	DRAWN	CHECKED	APPROVED	TITLE						
1	29-AUG-12	DRAWING TITLE CHANGED TO BURTON TYPE ONLY	-	AT	MMc	PDW	DRAWING ELECTRICAL WIRING 10&12 WAY HCU BURTON						
2	09-OCT-12	NO CHANGES TO THIS SHEET.	-	MMC	AT	KS							
3	11-DEC-12	WIRE IDENT CHANGED AS REQUEST. REF ECN29347	-	DH	AT	KS							
4	12-SEPT-13	ADDED AD8251 LEGEND DETAIL	B5	AT	KS	PDW	DESIGNED	DRAWN	CHECKED	APPROVED	DATE	DRAWING NO.	REV No.
5	21-JAN-14	ADDED NOTE TO PT100 CARD	-	JGC	IMP	IMP	P.D.W.	P.D.W.	A.T.	K.S.	21/08/12	AG2291	6
6	23-JAN-14	(IF FITTED) TEXT ADDED	C2/C4	LO	NRC	NRC						SHEET 3 OF 3	

ALL INTELLECTUAL PROPERTY RIGHTS SUBSISTING IN THESE DESIGNS ARE THE PROPERTY OF SOIL MACHINE DYNAMICS LTD. NO COPY IS TO BE MADE WITHOUT THE WRITTEN PERMISSION OF SOIL MACHINE DYNAMICS LTD. ANY PATENT APPLICATIONS, PATENTS AND/OR DESIGN APPLICATIONS, REGISTERED DESIGNS, DESIGN RIGHTS OR COPYRIGHT ARISING FROM OR CONTAINED IN THE DESIGNS ARE THE PROPERTY OF SOIL MACHINE DYNAMICS LTD AND ALL INFORMATION MUST BE HELD IN THE STRICTEST CONFIDENCE

**SMD** Soil Machine Dynamics Ltd **A3**