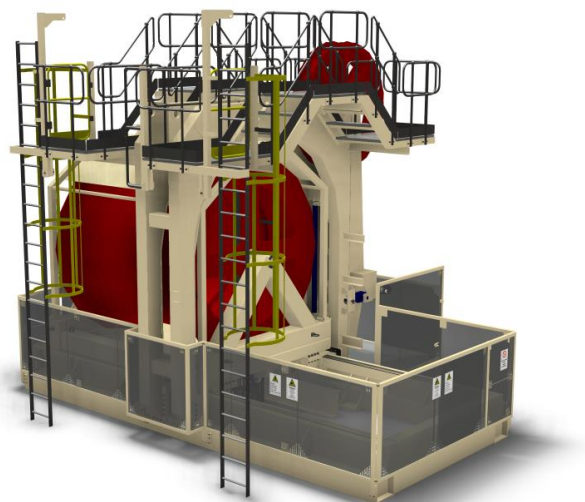


25Te SWL CONSTANT EXIT UMBILICAL WINCH WITH SLACK ARM

GENERAL	
Typical Application	Plough & Trenching LARS
Design	Lloyds
Environment	Safe Area
Weight	
Standard (Empty Drum)	38Te
Operating Temperature	
Standard	-10°C to +45°C
Deck Mounting	
Deck Mount Points	6
Mount Configuration	Bolted plate, welded to deck
Padeyes	
Main Lift	Lifted via a spreader beam via the winch drum
Snatch Limiter	
SWL	25Te
Weight (approx.)	6Te
Gas Spring	Nitrogen backed hydraulic cylinder

DIMENSIONS	
Extremities	
Length (across drum)	7520mm
Width (including snatch limiter)	8100mm
Height (includes sheave arm)	5360mm
Drum (with Lebus Grooves)	
Length (Between flanges)	2761mm
Core Diameter	2600mm
Flange Diameter	3250mm



Linksyn™ is a Trade Mark of Trelleborg Offshore

PERFORMANCE	
Line Pull	
Bottom layer	30Te
Top Layer	25Te
Winch Speed	
Range	Variable to 45m/min (Depends on layer and hydraulic power available)
Umbilical capacity	
53mm (Typical)	2200m
Sheave	53mm umbilical and Linksyn™
Drive	
Drive	Plug in motors to drive plate and Slew Ring
Brake	Integral fail safe
Tension Mode	Variable set, constant tension mode
Spooling	
Fleeting Carriage	Drum is moved via a hydraulic cylinder to give constant exit to the motion compensator
Hydraulic	
Supply (max)	280bar
Fittings	All Stainless Steel
Connection	SAE Bolted Flanges

CONTROL	
Control Console	
Controls	Pick-Up / Pay-Out
	Fleeting Left / Right
	Fleeting Auto / Manual
	Constant Tension Select / Adjust
	Touchscreen control interface
	Remote operation possible
Winch Instrumentation	System Pressure
	Length Out
	Low boost pressure
	Emergency Stop activated
	Motion compensator movement
	Umbilical tension

NOTES	
•	Spray nozzle umbilical cooling (200LPM @ 2-3bar (10bar max))
•	Optional deck camera and pan and tilt assembly suitable for deck installation
•	Brakes released flashing beacon
•	Fleeting error audible alarm